



Belden® Optical Fiber Catalog



One Enterprise.
One Infrastructure.
One Partner.

**Belden IBDN
FiberExpress®
Systems**

BELDEN

With the IBDN FiberExpress Systems, Belden takes a complete approach to fiber optic cabling. Our systems are uniquely positioned to support everything from legacy fiber systems and current backbone and data center fiber links, to future high-speed fiber transmission and long-reach fiber applications.



One Enterprise.
One Infrastructure.
One Partner.



Belden IBDN FiberExpress® Systems Reduce Complexity and Increase Flexibility

Involved in the development of optical fiber components for over 40 years, Belden is a leading supplier of high-quality, cost-effective optical fiber cabling systems. The IBDN FiberExpress Systems are the culmination of Belden's experience and expertise in a variety of applications, including data centers, premise and campus network backbone infrastructures, fiber-to-the-desk (FTTD) applications, and horizontal and centralized cabling systems. Guaranteed to meet or exceed all applicable TIA/EIA, ISO/IEC and IEEE standards, each end-to-end IBDN FiberExpress System is designed to offer reduced complexity, increased flexibility, and rapid installation for maximum cost effectiveness.

Table of Contents	Page
Introduction	3
FiberExpress Connectivity	8-38
FX Connectors	8-11
FX Ultra HD System	12-13
FX Ultra System	14-19
FX Manager	20-21
FX Patch Panels	22-24
FX Pre-Connectorized Assemblies	25-35
– FX 40G Ethernet Solution	25
– FX MPO Trunk	26-29
– FX Pre-Connectorized Assemblies	30-31
– FX Patch Cords	32-34
FX Bars	35
Workstation Outlets	36-37
FX Secure/Keyed LC System	38
FiberExpress Optical Fiber Cable	39-57
Cable Selection Reference	39
Distribution Cable	40-42
Interlocked Armor Distribution Cable	43-44
Interconnect Cable – Simplex and Duplex	45
Breakout Style Cable	46-47
Brilliance Maxi-Bend Tactical Cable	48
Single Jacket, All Dielectric Cable	49-51
Double Jacket, Armored Cable	52-53
Double Jacket, Heavy-Duty Cable	54
Central Tube Cable	55
TrayOptic® Heavy Duty, All Dielectric Cable	56-57
Part Number Index	58-62
Customer Service and Other Belden Contacts	Back Cover



A Complete Approach to Fiber Optic Cabling

Five different levels of Belden IBDN FiberExpress Systems are offered to meet customers' specific needs.

With the IBDN FiberExpress Systems, Belden takes a complete approach to fiber optic cabling. Uniquely positioned to support everything from legacy fiber systems and current backbone and data center fiber links, to future high-speed fiber transmission and long-reach fiber applications, Belden IBDN FiberExpress Systems are available in five different levels to meet specific customer needs. Each FiberExpress System is available with a wide range of components including:

- Pre-Terminated and Field-Terminated Systems
- Field-installable connectors
- Ultra high-density and standard patch panels and fiber management systems
- Patch cords, pigtails and pre-terminated multi-fiber cable assemblies
- Modular faceplates, modules and adapters
- Customizable hybrid cables, assemblies and housings
- Indoor and outdoor tight buffer and loose-tube distribution and trunk cables
- Interlock armor, direct burial and ruggedized cables for industrial environments

The following is a recap of each of the five Belden IBDN FiberExpress Systems that are offered today.

FX300 System

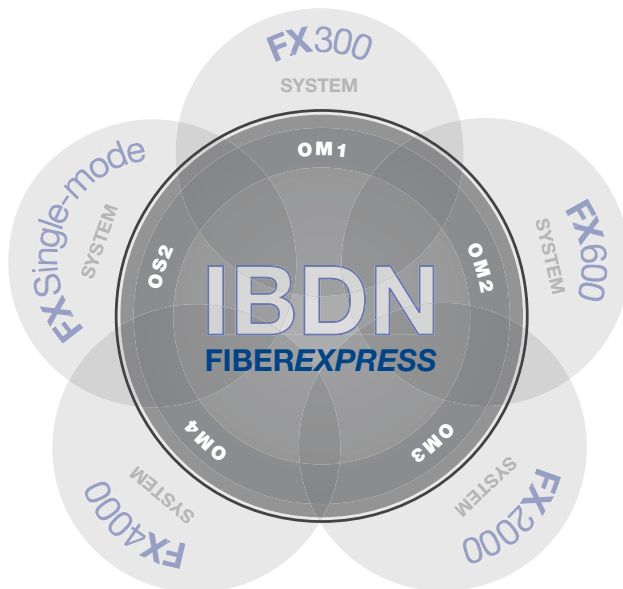
The FiberExpress FX300 System is an end-to-end fiber system that features OM1 type 62.5 μm multimode fiber with an overfilled launch bandwidth of 200 MHz-km at the 850 nm wavelength, capable of supporting 1Gb data rates over a 300 m distance. Combined with a host of connectors, assemblies, patch panels and accessories, the FX300 System is extremely flexible and versatile, making it the ideal solution for maintaining existing legacy 62.5 μm fiber systems in conventional premise LAN applications that use either LED or laser light sources.

FX600 System

The FiberExpress FX600 System is an end-to-end fiber system that features OM2 type 50 μm multimode fiber with an overfilled launch bandwidth of 500 MHz-km at the 850 nm wavelength, capable of supporting 1Gb data rates over a 600 m distance. With its smaller core, OM2 fiber offers more than twice the bandwidth of OM1 at the 850 nm wavelength. The system is available with a wide range of connectors, assemblies, patch panels and accessories, making it an ideal solution for maintaining conventional backbone, horizontal, and intrabuilding 1Gb fiber infrastructures.

FX2000 System

The FiberExpress FX2000 System is an end-to-end fiber system that features OM3 type laser-optimized 50 μm multimode fiber that is better able to take advantage of low-cost 850 nm wavelength VCSEL light sources. With an overfilled launch bandwidth of 1500 MHz-km at 850 nm, the FX2000 system has excellent optical characteristics, providing more robust support for multi-gigabit applications. Capable of supporting 10Gb data rates over a 300 m distance, the end-to-end FX2000 System creates a cost-effective, high-bandwidth, fiber system for premise and campus backbone LAN infrastructures, storage area networks (SANs), central offices and data centers.



One Enterprise.
One Infrastructure.
One Partner.



FX4000 System

To meet the increasing demands for higher bandwidth and to support next-generation speeds of 40 and 100Gb, the FiberExpress FX4000 System features the very latest OM4 type laser-optimized 50 µm multimode fiber with a minimum overfilled launch bandwidth of 3500 MHz-km at 850 nm. Recognized as the fiber media of choice for new high-speed data networks, Belden's FX4000 System is capable of supporting 10Gb over a 550 m distance and 40 and 100Gb over a 150 m distance. The combination of new OM4 fiber and Belden's pre-terminated multi-fiber cable assemblies and accessories make the FX4000 end-to-end system the highest performing multimode fiber system available to support supercomputer data center demands and easily prepare for tomorrow's bandwidth needs.

FX Single-mode System

For long-reach applications in campus and outside plant backbones, Belden's FX Single-mode System features OS2 type singlemode fiber that transmits at 1310 and 1550 nm wavelengths. Belden's FX Single-mode System's low-water peak fiber is ideal for Wavelength Division Multiplexing (WDM) technology where multiple wavelengths operating at 10 or 25Gb are transmitted over a single fiber to deliver extremely high bandwidth to distances of 10 km or more.

Belden IBDN FiberExpress Systems Selection Guide

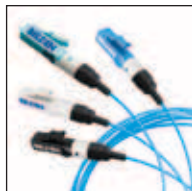
Belden System	FX300 System	FX600 System	FX2000 System	FX4000 System	FX Single-mode System
Standard	OM1	OM2	OM3	OM4	OS2
Maximum Reach	300 m/1Gb	600 m/1Gb	300 m/10Gb	550 m/10Gb & 150 m/40-100Gb	10 km
Cable Selection	Distribution • Interlock Armor Distribution • Loose Tube • Trunk Cables				
Patch Panels	FX Ultra HD & FX Ultra Systems • FX Manager System • FX Patch Panels				
Connectors	FX Brilliance Connectors • Optimax Connectors				
Assemblies	FX Patch Cords and Pigtails • FX Multi-Fiber Cable Assemblies				
Outlets	MediaFlex Multimedia Outlets • Interface and MDVO Outlets				

Top-Quality Flagship Innovations Provide the Ultimate Value

Every Belden FiberExpress component reflects our attention to quality and detail, and our commitment to you.

Backed by years of field-proven telecommunications experience, Belden IBDN FiberExpress System components include several innovative technologies designed to ensure cost-effective, easy deployment and maximum performance and reliability, while meeting current and future needs for capacity and scalability. These products are designed with the same focus on quality and performance found in Belden's complete product line.

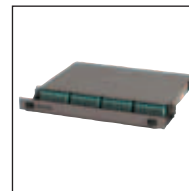
FiberExpress Brilliance Field-Installable Connectors



Belden FX Brilliance Field-Installable Connectors take fiber termination to a whole new level. As the industry's best solution for the challenges of field connectorization,

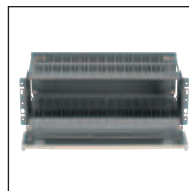
FX Brilliance Connectors are the only fiber optic connectors to offer reliable terminations in less than five seconds — with no specialized tools, epoxy, curing or polishing required. Fast, easy and consistent terminations combined with the ability to re-terminate and no tools needed means that Brilliance Connectors save significant time and labor while reducing material cost and connector waste. Ideal for use in any LAN or data center application, FX Brilliance Connectors are designed and manufactured with the best materials, expert polishing processes, and a 100% connector reliability test methodology to provide superior performance for today's high-speed optical networks. Installation kits are also available to easily and cost-effectively transition to FiberExpress Brilliance Connector technology.

FiberExpress Ultra HD System



Designed for an optimized combination of density and modularity in data center and networking applications, the FiberExpress Ultra HD System can house

up to 72 LC Duplex connectors or up to 72 MPO connectors in just one rack unit. With easy-to-access FiberExpress Ultra HD Patch Panel Housings available in 1U, 2U, and 4U sizes, the system is extremely scalable and configurable for any level of density. The FiberExpress Ultra HD System is compatible with all Ultra HD and existing Ultra Pre-Terminated Cassettes or Adapter Frames that are easily inserted or removed from the housing. The system's modularity makes it an ideal solution for 1Gb and 10Gb applications, and for easy migration to 40Gb and 100Gb applications. Because it is designed using a back-to-basics approach with overall fewer components and a separately available 1U splice housing kit, the FiberExpress Ultra HD System is lightweight and compact for an intuitive, fast and easy installation by just one individual.



FiberExpress Manager

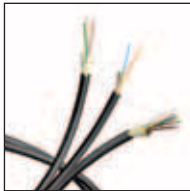
The FiberExpress Manager is a cost-effective and compact modular system that facilitates management

of large numbers of high-density premise fiber interconnections or splices — up to 1,920 single-mode or multimode fiber terminations in a single rack. The basic building blocks of the FiberExpress Manager are the connector modules, which are rack mounted using FiberExpress Manager Shelves that provide effective cable routing and patch cord management. The connector modules support LC, SC, ST and MPO connectors and feature an innovative release mechanism that allows it to easily slide from the shelf like a PC card. A Flex Kit is available for effectively splitting cables into individual fiber strands when necessary while maintaining proper bend radius, and a Splice Holder Kit can be used to hold up to six (6) fusion or mechanical splices.

One Enterprise.
One Infrastructure.
One Partner.



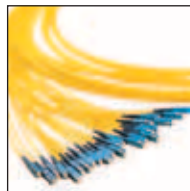
Bend Insensitive Fiber



To solve the key installation challenges of today's high-speed, high-density fiber applications, Belden offers *FiberExpress* Bend Insensitive Multimode Fiber. Bend

Insensitive Multimode Fiber is fully standards compliant and compatible with OM2, OM3 and OM4 optical fiber types. It provides up to 10 times better macrobend performance than traditional legacy optical fiber, significantly reducing bend-induced attenuation while maintaining the existing performance and reliability of the fiber. With bend sensitivity less of a concern, *FiberExpress* Bend Insensitive Multimode Fiber can be easily installed in even the most challenging high-density applications to help eliminate space constraints, provide significant cost savings and reduce downtime.

Customized Fiber Solutions



Belden understands that application needs vary from market to market and from customer to customer. That's why Belden offers complete customization of

fiber optic solutions, including customized hybrid cables, special assemblies, zero-U configurations and connector systems. Belden's pre-terminated solutions are available in a wide variety of connector types and customized lengths to meet exacting customer needs. Belden *FiberExpress* Secure/Keyed LC system is available with twelve different color-coded keying options to meet varying levels of required physical network segregation and security. If you need it, Belden will build it.

Superior Customer Service

All Belden IBDN *FiberExpress* Systems, are backed by expert service and technical support and a commitment to delivering high-performance, reliable transmission solutions. Well positioned as a leading single-source provider, Belden's global network of top-quality distribution and fully-trained installation partners provide comprehensive local and global support from design, delivery and installation to post-installation support. All of our fiber products and systems are backed by best-in-class, application-specific warranty programs that offer guaranteed end-to-end system performance for complete peace of mind and reduced risk over the lifetime of the installed system.

Contact Belden Today

For more information about the Belden IBDN *FiberExpress* Systems, call 1.800.BELDEN.1 (800.235.3361) or visit www.belden.com

Start designing your own
FiberExpress System
by selecting from the
products featured on
the following pages.



FiberExpress Connectors

Brilliance Field-Installable Connectors and Installation Kits



FiberExpress Brilliance Connectors

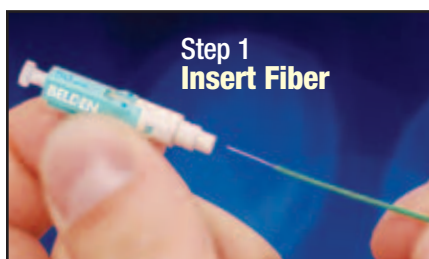
FiberExpress Brilliance Field-Installable Connectors

The FiberExpress Brilliance Connectors require no epoxy, no polish and no crimp. The FiberExpress Brilliance Connector is the only fiber optic connector in the marketplace to overcome the key challenges of connector installation in the field, that is, it provides a quick and greatly simplified tool-less fiber termination process and the ability to quickly and reliably verify the termination once it's made.

Belden's FiberExpress Brilliance Field-Installable Connectors are available as 900 μm tight buffered, 2 mm or 3 mm jacketed, single-mode (OS2) and multimode (OM1, OM2, OM3-OM4) LC, SC and ST Connectors. The single-mode (OS2) SC APC version is also available.

The connectors are available individually or in a bulk recyclable package where the 25 connectors are separated from the boots within the package.

Three Simple Steps



Step 1
Insert Fiber



Step 2
Activate Tab



Step 3
Install Boot

Connector Performance	Using Precision Cleaver		Reflectance
	Maximum Insertion Loss	Typical Insertion Loss	
Multimode	0.50 dB	0.20 dB	-25 dB
Single-mode UPC	0.50 dB	0.30 dB	-50 dB
Single-mode APC	0.50 dB	0.30 dB	-60 dB

Color of Housing	Multimode, OM1, 62.5 μm	Multimode, OM2, 50 μm	Multimode, OM3 - OM4, 50 μm	Single-mode, OS2 - UPC	Single-mode, OS2 - APC
LC	Beige	Black	Aqua	Blue	-
SC	Beige	Black	Aqua	Blue	Green
ST	Beige	Black	Aqua	Blue	-

FiberExpress Brilliance Field-Installable Connectors

Description	Belden Part Number					
	Multimode, OM1, 62.5 μm		Multimode, OM2, 50 μm		Multimode, OM3 - OM4, 50 μm	
	1 per package	25 per package	1 per package	25 per package	1 per package	25 per package
LC 900 μm Tight Buffer	AX104240-S1	AX104240-B25	AX104241-S1	AX104241-B25	AX104242-S1	AX104242-B25
SC 900 μm Tight Buffer	AX104244-S1	AX104244-B25	AX104245-S1	AX104245-B25	AX104246-S1	AX104246-B25
ST 900 μm Tight Buffer	AX104248-S1	AX104248-B25	AX104249-S1	AX104249-B25	AX104250-S1	AX104250-B25
LC jacketed 2.0 mm *	AX104254-S1	AX104254-B25	AX104255-S1	AX104255-B25	AX104256-S1	AX104256-B25
SC jacketed 2.0 mm *	AX104258-S1	AX104258-B25	AX104259-S1	AX104259-B25	AX104260-S1	AX104260-B25
ST jacketed 2.0 mm *	AX104262-S1	AX104262-B25	AX104263-S1	AX104263-B25	AX104264-S1	AX104264-B25

Description	Belden Part Number			
	Single-mode, OS2 - UPC		Single-mode, OS2 - APC	
	1 per package	25 per package	1 per package	25 per package
LC 900 μm Tight Buffer	AX104243-S1	AX104243-B25	-	-
SC 900 μm Tight Buffer	AX104247-S1	AX104247-B25	AX104253-S1	AX104253-B25
ST 900 μm Tight Buffer	AX104251-S1	AX104251-B25	-	-
LC jacketed 2.0 mm *	AX104257-S1	AX104257-B25	-	-
SC jacketed 2.0 mm *	AX104261-S1	AX104261-B25	AX104467-S1	AX104467-B25
ST jacketed 2.0 mm *	AX104265-S1	AX104265-B25	-	-

Description	Belden Part Number
3 mm jacketed boot, bag of 25	AX104577

*The jacketed version includes a 2 mm boot. A separate part number is available for the 3 mm boot.

One Enterprise.
One Infrastructure.
One Partner.



FiberExpress Connectors (continued)
Brilliance Field-Installable Connectors and Installation Kits

FiberExpress Brilliance Installation Kits

Although the termination of this connector requires no specialized or proprietary tools, Belden has developed two (2) Installation Kits

to allow installers to easily and cost-effectively acquire or transition to FiberExpress Brilliance Connector technology.

FiberExpress Brilliance Installation Kit

Description	Belden Part Number
Precision Installation Kit (Basic Kit, Fiber Preparation Tools, Precision Cleaver and Visual Fault Locator)	AX104271



AX104271, Precision Installation Kit

FiberExpress Brilliance Individual Components

Description	Belden Part Number
Precision Cleaver	AX104286
Precision Cleaver Replacement Blade (for FC-7 cleaver)	AX104293
Precision Cleaver Replacement Blade (for FC-7R cleaver)	AX104593
Support Handle with Adapters	AX104276
Support Handle LC Adapter	AX104289
Support Handle SC Adapter	AX104290
Support Handle ST Adapter	AX104291
Visual Fault Locator (VFL-250) with Adapter Cords	AX104283
Visual Fault Locator (VFL-125) LC-LC Adapter Cord	AX203567
Visual Fault Locator (VFL-125/250) LC-SC Adapter Cord (valid for ST also)	AX203568
Visual Fault Locator (VFL-250) SC-SC Adapter Cord (valid for ST also)	AX203569
Visual Fault Locator (VFL-125) LC-SC/APC Adapter Cord & Support Handle SC/APC Adapter	AX203895
Visual Fault Locator (VFL-250) SC-SC/APC Adapter Cord & Support Handle SC/APC Adapter	AX203930
Fiber/Cable Stripper	AX103151
Pen Marker	AX104279
Refurbishing Materials (80 alcohol wipes and a black pen marker)	AX100951
Safety Glasses	AX104282
Scissors	AX104280
Tweezers	AX104278
Waste Bottle	AX104281

For additional details, please refer to the Product Bulletin (PB308) or the products' Technical Data Sheets located at www.belden.com.



AX104286, Precision Cleaver



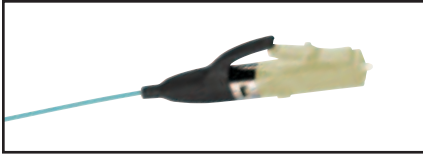
AX104276, Support Handle



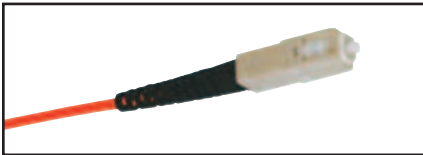
When used with the VFL, a light can be seen through the clear window on the connector body until a fiber has been properly terminated.

FiberExpress Connectors (continued)

Optimax Field-Installable Connectors, Installation Tool Kits and Accessories



AX101982, Optimax LC Connector



AX100029 with AX101794 Optimax SC Connector



A0408835 with AX101793 Optimax ST Connector

Optimax Field-Installable Connector

Optimax Connectors do not require epoxy, curing or polishing. Their design incorporates a factory-mounted fiber stub and a quality, zirconia ceramic ferrule with a physical contact (PC) polish for multimode and a super physical contact (SPC) polish for single-mode.

Connectors are available for multimode (OM1, OM2, OM3) and single-mode fiber installations. Only simple tools are required for installation, making Optimax a cost effective field termination.

Optimax Enhanced Installation Tool Kit

The Optimax Enhanced Installation Tool Kit is packaged in a small convenient carrying case and includes an Optimax LC, SC and ST installation and training video, installation instructions and all the tools required to terminate 900 μm buffered optical fiber and jacketed optical fiber.

Description	Belden Part Number
FiberExpress Connectors	
Optimax Field-Installable Connector	
LC Multimode, OM1, 62.5 μm^*	AX101981
LC Multimode, OM2 - OM3, 50 μm^*	AX101982
LC Single-mode, OS2*	AX101983
SC Multimode, OM1, 62.5 μm^*	AX100029
SC Multimode, OM2 - OM3, 50 μm^*	AX101077
SC Single-mode, OS2*	AX101792
ST Multimode, OM1, 62.5 μm^*	A0408835
ST Multimode, OM2 - OM3, 50 μm^*	AX101075
ST Single-mode, OS2*	AX101791
LC Accessory Kit for jacketed fiber (2 mm & 3 mm boots, crimp sleeves)	AX101984
SC Accessory Kit for jacketed fiber (3 mm boots, crimp sleeves, cord adapter)	AX101794
ST Accessory Kit for jacketed fiber (3 mm boots, crimp sleeves)	AX101793

*For 900 μm buffered fiber only. For termination on jacketed fiber, please use the appropriate Accessory Kit.

One Enterprise.
One Infrastructure.
One Partner.



FiberExpress Connectors (continued)

Optimax Field-Installable Connectors, Installation Tool Kits and Accessories

Description	Belden Part Number
FiberExpress Installation Tool Kits	
Optimax Enhanced Tool Kit	
LC/SC/ST (includes installation tools, fiber cleaver, crimping tool, instruction manual, microscope, tweezers, alcohol wipes, marker, scissors, waste bottle, universal fiber/cable stripper, and training video)	AX103142
Optimax Individual Components	
Fiber Cleaver	A0408829
Universal Installation Tool LC/SC/ST (includes inserts, tool, tool clamp)	AX103152
Installation Instruction Manual (LC, SC, ST)	AX103148
Crimp Tool (complete with die)	A0403641
Cleaver's Ceramic Blade Replacement	AX103149
Cleaver's Leaf Spring Base Plate Replacement	AX103150



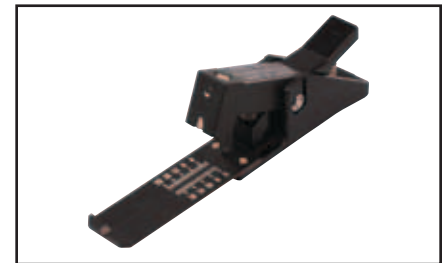
AX103142, Optimax Enhanced Tool Kit

Optical Fiber Accessories

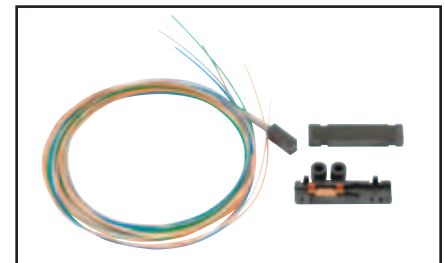
The Field Breakout Kit is designed to attach to one tube of a loose-tube cable. Each kit has either six or twelve 900 μm tubes that hold each of the coated fibers. For each end of the cable, one kit

is needed for every tube. For example, a 12-fiber 62.5 μm cable contains two 6-fiber tubes. This cable would require four kits, two for each end.

Description	Belden Part Number
FiberExpress Accessories	
Optical Fiber Field Breakout Kit	
6 fibers, 1/pack	AX101100
12 fibers, 1/pack	AX101101
Optical Fiber Field Breakout Kit for Central Tube cable	
6 fibers, 1/pack	AX104695
12 fibers, 1/pack	AX104696



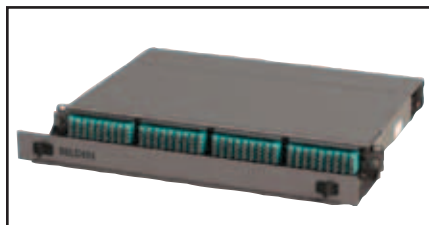
A0408829, Field Cleaver



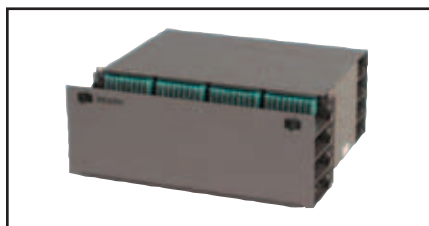
AX101100, Field Breakout Kit

FiberExpress Ultra HD System

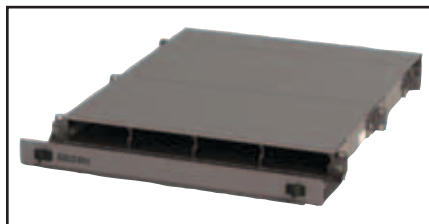
Patch Panel Housings, Patch Panel Fixed Shelves and Splice Housing Kit



AX104681 FiberExpress Ultra HD 1U Patch Panel Housing (shown loaded)



AX104683, FiberExpress Ultra HD 4U Patch Panel Housing (shown loaded)



FiberExpress Ultra HD Patch Panel 1U (AX104681) with mounted Splice Housing Kit (AX104684)



AX105164, FiberExpress Ultra HD 1U Patch Panel Standard Shelf



AX105167, FiberExpress Ultra HD 4U Patch Panel Recessed Shelf

FiberExpress Ultra HD System

Belden's FiberExpress Ultra HD System provides designers complete flexibility to architect a fiber connectivity solution to adapt to the varying port type, count and density needs in Data Centers, SANs and traditional LANs. Crafted with a back to basics approach, intuitive lightweight components are installer friendly ensuring fast clean installs. Looking to the future, a unique modular design clears the path to ensure 10G today and a seamless transition to 40G/100G when it's needed.

Feature-Rich FiberExpress Ultra HD Patch Panel Housings

As density continues to increase it brings both opportunity and challenge to network operators and installers. As an industry leader supporting up to 72 MPO or 72 LC Duplex ports per rack unit, combined with an optional splice housing supporting up to 144 fusion splices per rack unit the FX UHD delivers on the opportunity to reduce the physical footprint and ultimately the cost to implement, maintain and operate. Challenges are easily overcome with innovative features such as sliding & tilting drawers to enhance visibility and

eliminate errors during installation and MACs. Tool-less removal of drawers and trays reduce weight of even the largest 4U platform to a safe level for one installer to handle on a ladder.

Entry-Level FiberExpress Ultra HD Patch Panel Fixed Shelf

When lower density, cost effective solutions are needed the FX UHD Shelf provides the same great look and feel while maintaining compatibility with the vast array of FX Ultra and FX Ultra HD modules. Coupled with Belden pre-term solutions features like recessed mounting, removable doors and shallow depth provide a suitable option for the most space constrained or obstructed environment.

FiberExpress Ultra HD Splice Housing Kit

For field fusion spliced termination, the optional FiberExpress Ultra HD Splice Housing Kit can be mounted in the back of the Patch Panel Housings. The splice housing kit has a maximum capacity up to 144 fusion splices and its size is 1U. One Splice Housing Kit is needed for each rack-unit where splicing is required. Slice trays and splice holders are included in the Splice Housing kits.

FiberExpress Ultra HD System Capacity	Loaded with FXU HD Frames / Cassettes	Total LC Duplex / MPO connectors	Loaded with FXU Frames / Cassettes	Total LC Duplex / MPO connectors
1U Patch Panel Housing	4	72	4	48
2U Patch Panel Housing	8	144	8	96
4U Patch Panel Housing	16	288	16	192
1U Patch Panel Shelf	4	72	4	48
4U Patch Panel Shelf	10	180	10	120

Example: 288 LC Duplex connectors means 576 fibers.

Description	Belden Part Number
-------------	--------------------

FiberExpress Ultra HD System

Patch Panel Housings

1U Housing, Empty, Titanium Finish	AX104681
2U Housing, Empty, Titanium Finish	AX104682
4U Housing, Empty, Titanium Finish	AX104683

Patch Panel Shelves

1U Standard Fixed Shelf, Empty, Titanium Finish	AX105164
1U Recessed Fixed Shelf, Empty, Titanium Finish	AX105165
4U Standard Fixed Shelf, Empty, Titanium Finish	AX105166
4U Recessed Fixed Shelf, Empty, Titanium Finish	AX105167

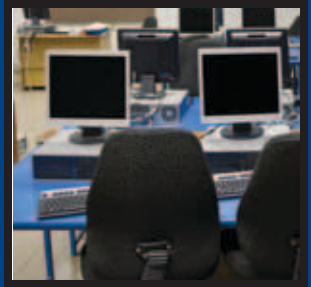
Splice Housing Kits

Optional 1U Splice Housing Kit, 144 Splices, Titanium Finish	AX104684
Optional 1U Splice Housing Kit, 72 Splices, Titanium Finish	AX105174

Tools & Accessories

FiberExpress Ultra HD Release Tool	AX104685
Patch Cord Tray Cover, Titanium Finish	AX105162
Splice Accessory Kit (144 Shrink Tubes, Velcro, Wire Markers, Cable Ties)	AX104705

One Enterprise.
One Infrastructure.
One Partner.



FiberExpress Ultra HD System (continued)
Pre-Terminated Cassettes and Frames

FiberExpress Ultra HD Pre-Terminated Cassettes

FiberExpress Ultra HD Pre-Terminated Cassettes come with 3 MPO male connectors at the rear of the Cassette and 18 LC Duplex connectors (36 fibers) in the front. They are available in multimode (OM3 and OM4 Low Loss) and single-mode versions. The Ultra HD Cassettes can also be easily inserted or removed from the patch panel housing for enhanced maintenance capabilities.

FiberExpress Ultra HD Frames

FiberExpress Ultra HD Frames have been designed to reach the maximum capacity: 18 LC Duplex connectors (36 fibers) per frame or 18 MPO connectors per frame. They are available in both multimode (OM3-OM4) and single-mode versions. The Ultra HD Frames can be easily inserted or removed from the patch panel housing for enhanced maintenance capabilities.

Color of Adapters	Multimode, OM3 - OM4, 50 µm	Single-mode, OS2
LC	Aqua	Blue
MPO	Aqua	Black

Description	Belden Part Number		
	Multimode, OM3, 50 µm	Multimode, OM4, 50 µm, Low Loss	Single-mode, OS2

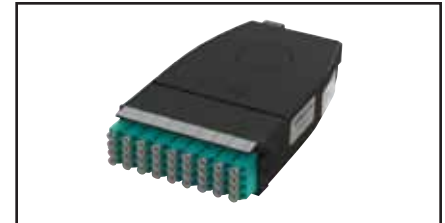
FiberExpress Ultra HD System

Pre-Terminated Cassettes			
LC Duplex - MPO (m), 18 ports, 36 fibers	AX104617	AX104658	AX104616

Description	Belden Part Number	
	Multimode, OM3-OM4, 50 µm	Single-mode, OS2

FiberExpress Ultra HD System

Frames		
LC Duplex, 18 ports, 36 fibers	AX104619	AX104618
18 MPO adapters	AX104620	AX104621



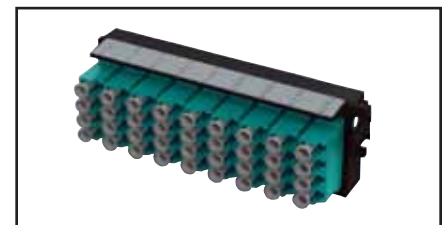
AX104617, FX UHD Pre-term cassette MPO-LC OM3 36 fibers, front view



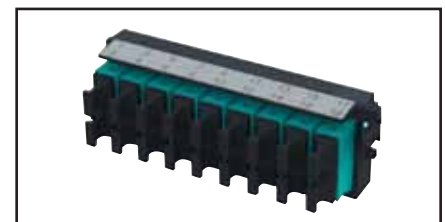
AX104617, FX UHD Pre-term cassette MPO-LC OM3 36 fibers, back view



AX104616, FX UHD Pre-term cassette MPO-LC SM 36 fibers



AX104619, FX UHD Frame LC OM3 36 fibers

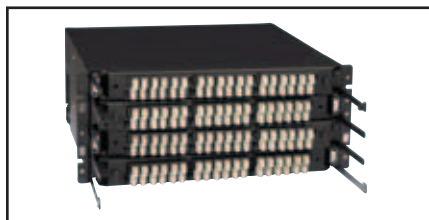


AX104620, FX UHD Frame 18 MPO

FiberExpress Ultra System Rack-mount and Wall-mount Patch Panels



AX103143, FiberExpress Ultra 1U Rack-mount Patch Panel (shown loaded)



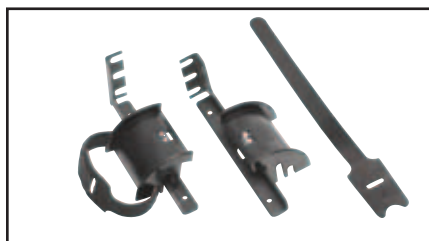
AX103267, FiberExpress Ultra 4U Rack-mount Patch Panel (shown loaded)



AX103928, FiberExpress Ultra Stackable Wall-mount Patch Panel



AX103928 and AX103932, FiberExpress Ultra Wall-mount Patch Panel with Spacer



AX103272, FiberExpress Ultra Patch Cord Management Brackets

FiberExpress Ultra System

Belden's FiberExpress Ultra System is ultra-rich in user-friendly features. Designed to meet the needs of IT managers and their technical teams, Belden built the system around three core concepts:

- High Density
- Ease of installation
- Flexibility, scalability and manageability

The result is a fiber patching system that is easy to deploy, operate and maintain, while ensuring maximum uptime, uninterrupted availability and superior performance – whether in the data center, LAN backbone or storage area network (SAN). The system's modular design provides optimal flexibility and scalability to “future proof” your investment and to provide a low

total cost of ownership when compared with other fiber patching systems.

FiberExpress Ultra Patch Panels

FiberExpress Ultra Patch Panels provide ultra high density connection while facilitating cable routing and patch cord management. Available in Rack-mount and Wall-mount versions, the Patch Panels are totally modular and scalable to accommodate future fiber build-out. Wall-mount version accommodates two (2) Frames or Cassettes for a maximum capacity of 48 fibers (LC). Rack-mount version is available in two sizes: 1U and 4U. 1U unit accommodates four (4) Frames or Cassettes for a maximum of 96 fibers (LC); 4U unit accommodates 12 Frames or Cassettes for a maximum of 288 fibers using LC connectors.

FiberExpress Ultra System Capacity	Frames	Cassettes	Splice Trays
1U, Rack-mount Patch Panel	4	4	2 x 12 in.
4U, Rack-mount Patch Panel	12	12	8 x 8 in.
Wall-mount Patch Panel	2	2	2 x 8 in.

Description	Belden Part Number
-------------	--------------------

FiberExpress Ultra System

Rack-mount Patch Panels/Components

1U Patch Panel, 19 in., Black	AX103143
4U Patch Panel, 19 in., Black	AX103267
4U 23 in. Extension Brackets, Black	AX103910
Patch Cord Management Brackets, Black	AX103272
1U Patch Cord Cover	AX103915

Wall-mount Patch Panels/Components

Stackable Patch Panel, Black	AX103928
2-inch Spacer, Black	AX103932
Door Lock Kit	AX103934



FiberExpress Ultra System (continued)
Pre-Terminated Cassettes

FiberExpress Ultra Pre-Terminated Cassettes

FiberExpress Ultra Cassettes come fully loaded with connector Bezels and pre-terminated with MPO male connector(s) at the rear of the Cassette. In combination with the Bezels and the

1-inch pull-out feature, the Cassette provides easy connection access. Cassettes can also be easily inserted or removed from the Patch Panels for enhanced maintenance capabilities. The Cassette's rear assembly and cover is available separately to provide additional installation capability.

Color of Adapters	Multimode, OM1, 62.5 µm	Multimode, OM2, 50 µm	Multimode, OM3-OM4, 50 µm	Single-mode, OS2	Single-mode, OS2 - APC
LC Duplex	Beige	Black	Aqua	Blue	Green
SC Simplex	Beige	Black	Aqua	Blue	Green
SC Duplex	Beige	Black	Aqua	Blue	Green
ST	Metal	Metal	Metal	Metal	—
MPO	Black	Black	Black	Black	Black

Description	Belden Part Number			
	Multimode, OM1, 62.5 µm	Multimode, OM2, 50 µm	Multimode, OM3, 50 µm	Single-mode, OS2

FiberExpress Ultra System

Pre-Terminated Cassettes				
LC Duplex - MPO (m), 6 fibers	AX103622	AX103676	AX103694	AX103802
LC Duplex with shutter - MPO (m), 6 fibers	AX103623	AX103677	AX103695	AX103803
LC Duplex - MPO (m), 12 fibers	AX103641	AX103683	AX103713	AX103821
LC Duplex with shutter - MPO (m), 12 fibers	AX103642	AX103684	AX103714	AX103822
LC Duplex - MPO (m), 24 fibers	AX103657	AX103687	AX103729	AX103837
SC Duplex - MPO (m), 6 fibers	AX103620	AX103674	AX103692	AX103800
SC Duplex with shutter - MPO (m), 6 fibers	AX103621	AX103675	AX103693	AX103801
SC Duplex - MPO (m), 12 fibers	AX103639	AX103681	AX103711	AX103819
ST - MPO (m), 6 fibers	AX103619	AX103673	AX103691	AX103799
ST - MPO (m), 12 fibers	AX103638	AX103680	AX103710	AX103818

Description	Belden Part Number

FiberExpress Ultra System

Pre-Terminated Cassettes	
LC Duplex - MPO (m), 12 fibers	AX103767
LC Duplex - MPO (m), 24 fibers	AX103783

Pre-terminated Cassettes Type B (40G Path)	
LC Duplex - MPO (f), 12 fibers, 40G Path	AX105173
LC Duplex - MPO (f), 24 fibers, 40G Path	AX105172



AX103729, FiberExpress Ultra Pre-Terminated Cassette, LC-Duplex - MPO (m), OM3, front view



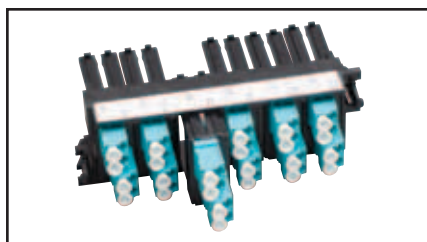
AX103729, FiberExpress Ultra Pre-Terminated Cassette, LC-Duplex - MPO (m), OM3, back view



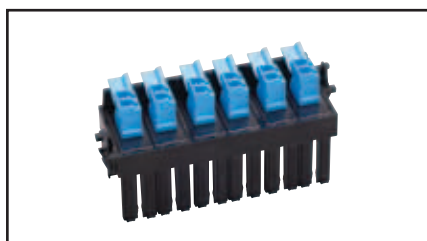
AX103837, FiberExpress Ultra Pre-Terminated Cassette, LC-Duplex - MPO (m), Single-mode, front view

FiberExpress Ultra System (continued)

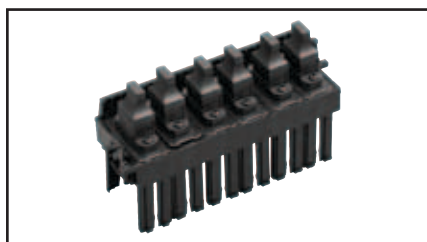
Frames



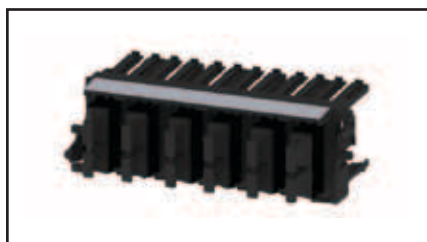
AX103465, FiberExpress Ultra Frame, LC Duplex



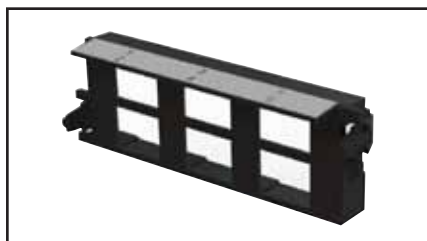
AX103503, FiberExpress Ultra Frame, LC Duplex with Shutter



AX103901, FiberExpress Ultra Frame, 6 MPO Adapters



AX103902, FiberExpress Ultra Frame, 12 MPO Adapters



AX1015160, KeyConnect Empty Frame 6 ports

FiberExpress Ultra Frames

FiberExpress Ultra Frames – typically preloaded with Bezels – provide streamlined patch cord management and optimal design flexibility and single- or dual-connector options. A unique (patent pending) mechanism allows the Bezel to slide out 1-inch (2.5 cm) from the frame, providing easy connector access and patch

cord management. Available in a wide variety of connector types, in both multimode and single-mode versions, and in the newly recognized TIA/EIA multimode colors. The Bezels and Frames can be easily inserted or removed from the panel for enhanced maintenance capabilities. Each Frame can accommodate a maximum of six (6) Bezels. Frames with pigtailed come loaded with connector Bezels and 2-meter pigtailed.

Color of Adapters	Multimode, OM1, 62.5 μm	Multimode, OM2, 50 μm	Multimode, OM3-OM4, 50 μm	Single-mode, OS2	Single-mode, OS2 - APC
LC Duplex	Beige	Black	Aqua	Blue	Green
SC Simplex	Beige	Black	Aqua	Blue	Green
SC Duplex	Beige	Black	Aqua	Blue	Green
ST	Metal	Metal	Metal	Metal	–
MPO	Black	Black	Black	Black	Black

Description	Belden Part Number			
	Multimode, OM1, 62.5 μm	Multimode, OM2, 50 μm	Multimode, OM3-OM4, 50 μm	Single-mode, OS2

FiberExpress Ultra System

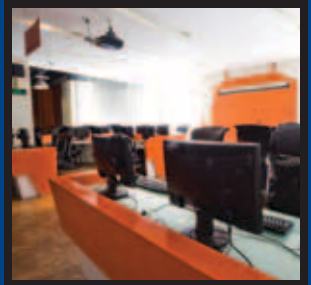
Frames				
LC Duplex, 6 fibers	AX103387	AX103443	AX103457	AX103476
LC Duplex with shutter, 6 fibers	AX103388	AX103444	AX103458	AX103477
LC Duplex, 12 fibers	AX103408	AX103449	AX103463	AX103502
LC Duplex with shutter, 12 fibers	AX103409	AX103450	AX103464	AX103503
LC Duplex, 24 fibers	AX103424	AX103451	AX103465	AX103519
SC Simplex, 6 fibers	AX103383	AX103439	AX103453	AX103468
SC Simplex with shutter, 6 fibers	AX103384	AX103440	AX103454	AX103469
SC Simplex, 12 fibers	AX103404	AX103445	AX103459	AX103494
SC Duplex, 6 fibers	AX103385	AX103441	AX103455	AX103470
SC Duplex with shutter, 6 fibers	AX103386	AX103442	AX103456	AX103471
SC Duplex, 12 fibers	AX103406	AX103447	AX103461	AX103496
ST, 6 fibers	←	AX103382	→	AX103467
ST, 12 fibers	←	AX103403	→	AX103493
6 MPO adapters	←	AX103901	→	
12 MPO adapters	←	AX103902	→	
Blank Frame	←	AX105159	→	
Cassette Rear Assembly	←	AX103917	→	
KeyConnect Empty Frame, 6 ports	←	AX105160 *	→	

* AX105160 will ONLY accept KeyConnect UTP Copper modules or KeyConnect fiber modules.

For available KeyConnect UTP Copper modules, please refer to the Belden Copper Catalog.

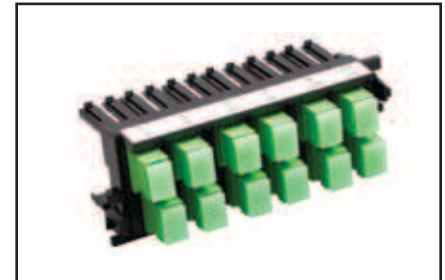
For available KeyConnect Fiber modules, please refer to page 36.

One Enterprise.
One Infrastructure.
One Partner.



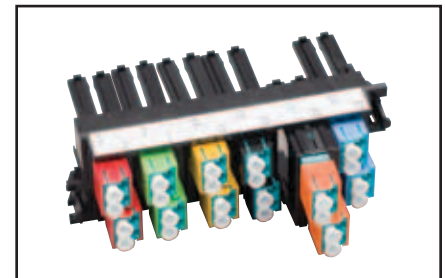
FiberExpress Ultra System (continued)
Frames

Description	Belden Part Number Single-mode, OS2
FiberExpress Ultra System	
Frames - APC	
LC APC Duplex, 6 fibers	AX103478
LC APC Duplex with shutter, 6 fibers	AX103479
LC APC Duplex, 12 fibers	AX103504
LC APC Duplex with shutter, 12 fibers	AX103505
LC APC Duplex, 24 fibers	AX103521
SC APC Simplex, 6 fibers	AX103472
SC APC Simplex with shutter, 6 fibers	AX103473
SC APC Simplex, 12 fibers	AX103498
SC APC Duplex, 6 fibers	AX103474
SC APC Duplex with shutter, 6 fibers	AX103475
SC APC Duplex, 12 fibers	AX103500



AX103498, FiberExpress Ultra Frame, SC APC

Description	Belden Part Number
FiberExpress Ultra System	
Color-Coded Icons for LC Duplex Adapters	
Color-Coded Icon Kit for LC Duplex Adapters	AX104572 *
LC Duplex icon, Blue, pack of 25 units	AX104508-B25
LC Duplex icon, Orange, pack of 25 units	AX104509-B25
LC Duplex icon, Black, pack of 25 units	AX104510-B25
LC Duplex icon, Yellow, pack of 25 units	AX104511-B25
LC Duplex icon, Green, pack of 25 units	AX104512-B25
LC Duplex icon, Red, pack of 25 units	AX104513-B25
LC Duplex icon, Aqua, pack of 25 units	AX104514-B25



AX104572, FiberExpress Color-Coded Icon Kit, (shown on frame)

*AX104572 includes colors Blue, Orange, Black, Yellow, Green and Red (2 icons per each color).

FiberExpress Ultra System (continued) Frames with Pigtails

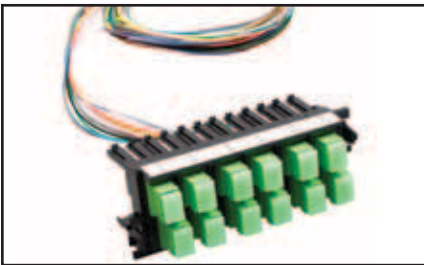


AX103575, FiberExpress Ultra Frame with Pigtails, LC Duplex (shown in packaging)

Description	Belden Part Number			
	Multimode, OM1, 62.5 μm	Multimode, OM2, 50 μm	Multimode, OM3, 50 μm	Single-mode, OS2

FiberExpress Ultra System

Frames with Pigtails				
LC Duplex with pigtails, 6 fibers	AX103539	AX103553	AX103567	AX103599
LC Duplex with shutter & pigtails, 6 fibers	AX103540	AX103554	AX103568	AX103600
LC Duplex with pigtails, 12 fibers	AX103545	AX103559	AX103573	AX103611
LC Duplex with shutter & pigtails, 12 fibers	AX103546	AX103560	AX103574	AX103612
LC Duplex with pigtails, 24 fibers	AX103547	AX103561	AX103575	AX103615
SC Simplex with pigtails, 6 fibers	AX103535	AX103549	AX103563	AX103591
SC Simplex with shutter & pigtails, 6 fibers	AX103536	AX103550	AX103564	AX103592
SC Simplex with pigtails, 12 fibers	AX103541	AX103555	AX103569	AX103603
SC Duplex with pigtails, 6 fibers	AX103537	AX103551	AX103565	AX103593
SC Duplex with shutter & pigtails, 6 fibers	AX103538	AX103552	AX103566	AX103594
SC Duplex with pigtails, 12 fibers	AX103543	AX103557	AX103571	AX103605



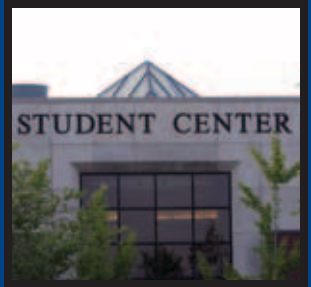
AX103607, FiberExpress Ultra Frame with Pigtails, SC APC Simplex

Description	Belden Part Number Single-mode, OS2
-------------	--

FiberExpress Ultra System

Frames with Pigtails—APC	
LC APC Duplex with pigtails, 6 fibers	AX103601
LC APC Duplex with shutter & pigtails, 6 fibers	AX103602
LC APC Duplex with pigtails, 12 fibers	AX103613
LC APC Duplex with shutter & pigtails, 12 fibers	AX103614
LC APC Duplex with pigtails, 24 fibers	AX103617
SC APC Simplex with pigtails, 6 fibers	AX103595
SC APC Simplex with shutter & pigtails, 6 fibers	AX103596
SC APC Simplex with pigtails, 12 fibers	AX103607
SC APC Duplex with pigtails, 6 fibers	AX103597
SC APC Duplex with shutter & pigtails, 6 fibers	AX103598
SC APC Duplex with pigtails, 12 fibers	AX103609

One Enterprise.
One Infrastructure.
One Partner.



FiberExpress Ultra System (continued)
Splice Tray Kits and Enclosures

FiberExpress Ultra Splice Tray Kits and Enclosures

FiberExpress Ultra Splice Tray Kits offer splicing solutions that support, protect and organize optical fibers to make splicing faster, easier to perform, more secure and error-free. Available in three sizes: each Splice Tray Kit contains one (1) organizer tray, fiber support and connection tubes, cable ties and identification

markers. The Kits feature rugged 20-gauge steel construction and a Lexan cover.

The Splice Enclosures provide a convenient area for bonding, grounding and termination of the cables, while maintaining the proper bend radius and intuitive cable routing. Available in Rack- and Wall-mount versions, they come equipped with all the hardware necessary to organize and protect cables and splices.

FiberExpress Ultra Splice Enclosure Capacity	Splice Trays
Wall-mount	4 x 10 in.
Rack-mount	6 x 12 in.

Splice Tray Optimal Capacity	Splices
8 in. Splice Tray	24
10 in. Splice Tray	36
12 in. Splice Tray	36

Description	Belden Part Number
-------------	--------------------

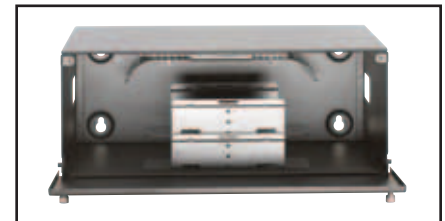
FiberExpress Ultra System

Wall- and Rack-mount Splice Enclosures	
Wall-mount Splice Enclosure, Black	AX103930
Rack-mount Splice Enclosure, 4U, Black	AX103900

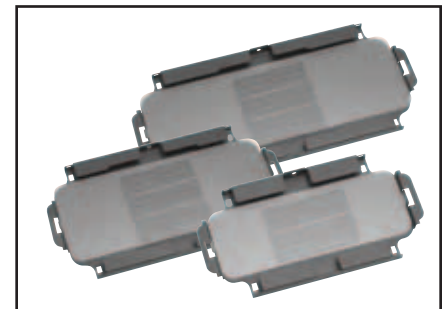
Splice Kits/Lock	
8 in. Splice Tray Kit	AX103912
10 in. Splice Tray Kit	AX103913
12 in. Splice Tray Kit	AX103914
Lock (for Wall-mount Splice Enclosure)	AX103934
Patch Panel and Splice Enclosure Flex Kit	AX104002



AX103930, FiberExpress Ultra Wall-mount Splice Enclosure



AX103900, FiberExpress Ultra Rack-mount Enclosure, 4U (with Splice Tray Caddy)



FiberExpress Ultra Splice Trays

FiberExpress Manager

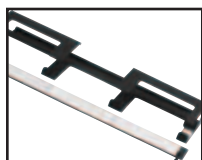
Rack-mount Patch Panel, Shelves and Accessories



AX101943, FiberExpress Manager 1U Rack-mount Patch Panel



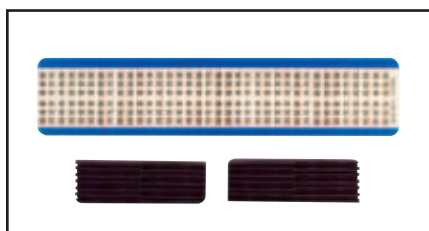
AX100935, FiberExpress Manager Shelf



AX102032, FiberExpress Manager 1U Cable Management Accessory



AX100945, Flex Kit



AX101098, Splice Holder Kit

FiberExpress Manager 1U

The FiberExpress Manager 1U Rack-mount Patch Panel is a low-cost, compact assembly designed for interconnection or splicing of optical fiber cables, using up to three FiberExpress Manager Modules. The low-profile design minimizes rack space to only 45 mm (1.75 in.). An optional FiberExpress Manager 1U Cable Management Accessory is also available.

FiberExpress Manager Shelf

FiberExpress Modules are rack-mounted using FiberExpress Manager Shelves. The shelves provide the total system with extra high connection density while facilitating cable routing and patch cord management. For

19- or 23-inch rack: 19 in. shelf holds up to 12 modules; 23 in. shelf holds up to 16 modules.

The Flex Kit contains tubes and manifolds designed to split cables into individual fiber strands, and is suitable for 6 fibers up to 12 fibers. It is necessary for use with loose tube cables or when the fiber cable count does not match the number of connections in the FiberExpress Manager Connector Module. The Flex Kit tubes help to maintain proper fiber bend radius. One kit is required per 12 modules (one 19 in. shelf).

A Splice Holder Kit can be used to hold fusion or mechanical splices. Each splice holder can handle up to 6 splices.

FiberExpress Manager Patch Panel Capacity	Connector Modules
1U Patch Panel	3
4U shelf, 19 in.	12
4U shelf, 23 in.	16

Description	Belden Part Number
FiberExpress Manager	
Patch Panels / Accessories	
1U, Rack-mount Patch Panels, 19 in., 5 kg (11 lb)	AX101943
4U Shelf, 19 in., 8.2 kg (18 lb)	AX101085
4U Shelf, 23 in., 10.9 kg (24 lb)	AX100935
1U, Cable Management Accessory, 19 in., 1 kg (2 lb)	AX102032
Flex Kit, 19 in.	AX100945
Splice Holder Kit (4 x Splice Holders of 6 positions & 4 x Wire Markers)	AX101098

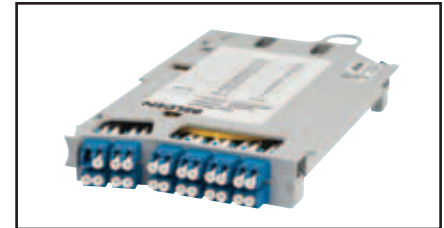
One Enterprise.
One Infrastructure.
One Partner.



FiberExpress Manager (continued)
Connector Modules and Pre-Terminated Cassettes

FiberExpress Manager Connector Module

The Connector Module is the basic building block of the FiberExpress Manager. It is designed with a unique release mechanism that allows it to slide from the shelf like a PC card, easing management of patch cords.



AX102307 LC Duplex Pre-Terminated Connector Module



AX101484, FiberExpress Manager Connector Module, 6 MPO adapters

Description	Belden Part Number	
	Multimode	Single-mode

FiberExpress Manager

Connector Modules			
LC Duplex Aqua adapters, 12 fibers	AX103071	–	
LC Duplex Aqua adapters, 24 fibers	AX103070	–	
LC Duplex, 12 fibers	AX101528	AX101527	
LC Duplex, 24 fibers	AX102306	AX102305	
SC Simplex, 6 fibers	–	AX100943	
SC Duplex, 6 fibers	AX101092	AX100944	
SC Duplex, 12 fibers	AX101714	AX101713	
SC Duplex (ST in), 12 fibers	AX101120	AX101119	
SC Duplex with pigtails (UPC), 12 fibers	–	AX101715	
ST, 6 fibers	AX101089	AX100936	
ST, 12 fibers	AX101187	AX101186	
MPO, 6 adapters	←	AX101484	→
Blank	←	AX104462	→

Description	Belden Part Number			
	Multimode, OM1, 62.5 μm	Multimode, OM2-OM3, 50 μm	Multimode, OM4 (Low Loss), 50 μm	Single-mode, OS2

FiberExpress Manager

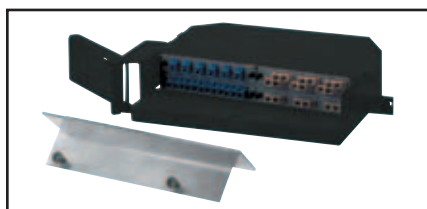
Pre-Terminated Connector Modules				
LC Duplex - MPO(m), 12 fibers	AX101530	AX101531	–	AX101529
LC Duplex - MPO(m), 24 fibers	AX102309	AX102308	AX104686	AX102307
SC Duplex - MPO(m), 12 fibers	AX101091	AX101114	–	AX101090
ST - MPO(m), 12 fibers	AX101189	AX101190	–	AX101188

FiberExpress Patch Panels

Rack-mount Patch Panels



AX100041, FiberExpress 12/24 Port (1U) Rack-mount Patch Panel



AX100068, FiberExpress 24/48 Port (2U) Rack-mount Patch Panel



AX104934, FiberExpress (3U) Rack-Mount Patch Panel (Rear Access)



AX100116, FiberExpress 48/96 Port (4U) Rack-mount Patch Panel

The *FiberExpress* 1U Rack-mount Patch Panels are equipped with a special hinge that allows easy access to the rear of the patch panel without disturbing the optical fiber cable. A specially designed front panel allows connector protection and easy routing of optical fiber patch cords. The *FiberExpress* Rack-mount Patch Panels are also compatible with our 203 mm (8 in.) Splice Organizer Trays. This allows the optical fiber cable to be either terminated with single-ended patch cords or Field-Installable connectors. The patch panels can be used with ST, SC simplex, SC duplex or LC duplex adapter strips (ordered separately).

The *FiberExpress* 1U Rack-mount Patch Panel is a low-cost, compact assembly designed for interconnection or splicing of optical fiber cables, from 12 up to 48 fibers if LC double density adapter strips are used. The low-profile design minimizes rack space to only 45 mm (1.75 in.). An optional smoked Plexiglass front cover is also available.

The *FiberExpress* 2U Rack-mount Patch Panel offers a high fiber capacity, 96 fibers if using double density LC adapter strips. The *FiberExpress* 2U comes equipped with a smoked Plexiglass front cover that protects fiber connections while allowing for quick visual inspection.

The *FiberExpress* 4U Rack-mount Patch Panel is an economical solution for the protection of optical fiber terminations and splices, up to 192 optical fibers if using LC connectors. The connector panel, accepting the Universal Adapter Strips, is located inside the enclosure and swings out (left or right) to give easy access to the cable and splices.

The *FiberExpress* 4U Rack-mount Patch Panel is a compact enclosure for the interconnection or splicing of optical fiber cables. The low-profile design minimizes required rack space to 178 mm (7 in.). It can be used with ST, SC simplex, SC duplex and LC duplex adapter strips (ordered separately).

FiberExpress Patch Panel Capacity	Adapter Strips	Splice Trays
1U Rack-mount	2	1 x 8 in.
2U Rack-mount	4	2 x 8 in.
4U Rack-mount	8	4 x 8 in. or 4 x 12 in.
Small Wall-mount	2	1 x 8 in.
Medium Wall-mount	4	2 x 8 in. or 2 x 12 in.
Large Wall-mount	8	4 x 8 in. or 4 x 12 in.

Description	Belden Part Number
-------------	--------------------

FiberExpress Patch Panels

Rack-mount Patch Panels	
Rack-mount Patch Panel 1U	AX100041
Rack-mount Patch Panel 2U	AX100068
Rack-mount Patch Panel 3U, Rear Access	AX104934
Rack-mount Patch Panel 4U	AX100116

If Single-ended patch cords are to be spliced to the fiber cable, don't forget to order Splice Organizer Trays or Kits. Both these and the Universal Adapter Strips can be ordered in the *FiberExpress* Accessories section.

One Enterprise.
One Infrastructure.
One Partner.



FiberExpress Patch Panels (continued)
Rack-mount Accessories and Wall-mount Patch Panels

FiberExpress Rack-mount Patch Panels
1U and 2U Accessories

The accessories provide additional panel mounting flexibility for racks, cabinets and cable entry.

Description	Belden Part Number
-------------	--------------------

FiberExpress Patch Panels

Rack-Mount Accessories (1U and 2U)	
127 mm (5 in.) Universal Offset Bracket Kit: for 19 in. and 23 in. racks (1U), Black	AX101799
for 19 in. and 23 in. racks (2U), Black	AX101797
23 in. Universal extension bracket, Black	AX101801
Right side cable entry bracket (1U), Black	AX100046
Right side cable entry bracket (2U), Black	AX100073
Front Cover (1U), Smoked Plexiglas	AX100045

FiberExpress Wall-Mount Patch Panel

The *FiberExpress* Wall-mount Patch Panel Series is an economical solution for the protection of optical fiber terminations and splices in hostile environments.

Using the *FiberExpress* Universal Adapter Strips (ordered separately), the Wall-mount Patch Panels allow for flexible and customized patch panel

design. They are compatible with most industry standard connections: ST, SC simplex, SC duplex and LC duplex.

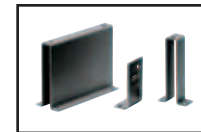
The *FiberExpress* Wall-mount Patch Panels have an ergonomic design, rugged construction and compact assemblies to effectively protect your optical fiber terminations and splices.

Description	Belden Part Number
-------------	--------------------

FiberExpress Patch Panels

Wall-mount	
Small, Black	AX100495
Medium, Black	AX100540
Large, Black	AX100542

If optical single-ended patch cords are to be spliced to the fiber cable, don't forget to order Splice Organizer Trays or Kits in *FiberExpress* Accessories section. Universal Adapter Strips can be ordered in *FiberExpress* Patch Panels section.



AX101799, 127 mm (5 in.) Universal Offset Bracket Kit, for 19 in. and 23 in. Racks for 1U



AX100046, Right Side Cable Entry Bracket for 1U



AX101801, 23 in. Rack Universal Extension Bracket for 1U and 2U



AX100045, Front Cover for 1U

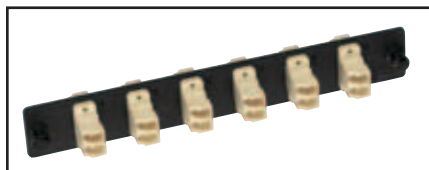


AX100495, Small Wall Mount

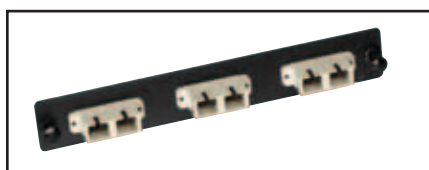


AX100542, Large Wall Mount

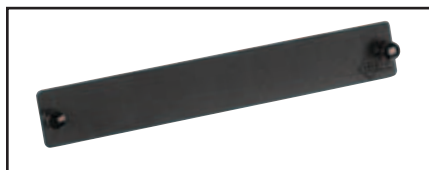
FiberExpress Patch Panels (continued) Optical Fiber Adapter Strips and Accessories



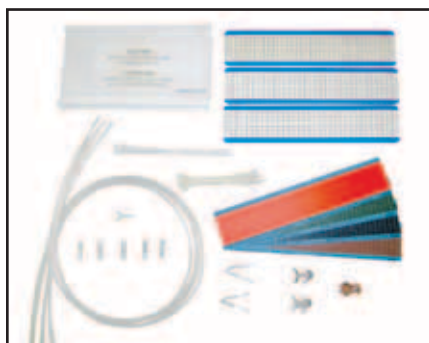
AX101729, Adapters loaded with 6 LC Duplex



AX100094, Adapters loaded with 3 SC Duplex



AX100066, Blank Strip



A0649869, Optical Fiber Splice Organizer Kits and Trays

Optical Fiber Adapter Strips

Universal Optical Fiber Adapter Strips are pre-loaded with six (single density) or 12 (double density) adapter sleeves. Two types of adapter sleeves are available: Phosphor Bronze and Zirconia Ceramic. Adapter sleeves are used as

the connecting interface between two optical fiber connectors.

A **Blank Adapter Strip** is also available and can be used with any FiberExpress Patch Panel to fill in unused adapter strip openings.

Description	Belden Part Number	
	Phosphor Bronze, Multimode	Zirconia Ceramic, Single-mode

FiberExpress Patch Panels

Adapter Strips		
LC Duplex, 12 fibers	AX101729	AX101731
LC Duplex, 24 fibers	AX101741	AX101743
SC Simplex, 6 fibers	AX100092	AX100538
SC Duplex, 6 fibers	AX100094	AX101407
SC Simplex, 12 fibers	AX100084	AX100532
SC Duplex, 12 fibers	AX100098	AX101409
ST, 6 fibers	AX100088	AX100534
ST, 12 fibers	AX100080	AX100528
Blank	← AX100066 →	

Optical Fiber Accessories

Optical Fiber Splice Organizer Kits provide the accessories necessary for installing the FiberExpress Patch Panels, as well as other

fiber terminals that accommodate the standard Belden organizer tray.

Splice Tray Optimal Capacity	Splices
8 in. Splice Tray Fusion	24
12 in. Splice Tray Fusion	24
8 in. Splice Tray Universal (mechanical or fusion)	12
12 in. Splice Tray Universal (mechanical or fusion)	12

Description	Belden Part Number
-------------	--------------------

FiberExpress Optical Fiber Accessories

Optical Fiber Splice Organizer Kit	
Splice kit, tray, 203 mm (8 in.)	A0649869
Splice kit, tray, 305 mm (12 in.)	A0318904

Optical Fiber Splice Tray	
Fusion, 203 mm (8 in.)	A0335015
Fusion, 305 mm (12 in.)	A0316446
Universal (mechanical or fusion), 203 mm (8 in.)	AX100079
Universal (mechanical or fusion), 305 mm (12 in.)	A0394328
Tray Cover, 203 mm (8 in.)	A0394331
Tray Cover, 305 mm (12 in.)	A0394330
Fusion Splice Protection 250 μm to 250 μm, Yellow	AX101169
Fusion Splice Protection 900 μm to 250 μm, Blue	AX101170
Fusion Splice Protection 900 μm to 900 μm, Green	AX101171

One Enterprise.
One Infrastructure.
One Partner.



FiberExpress Pre-Connectorized Assemblies

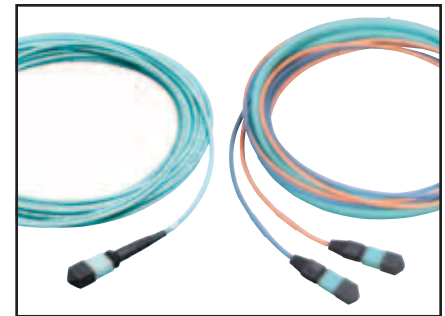
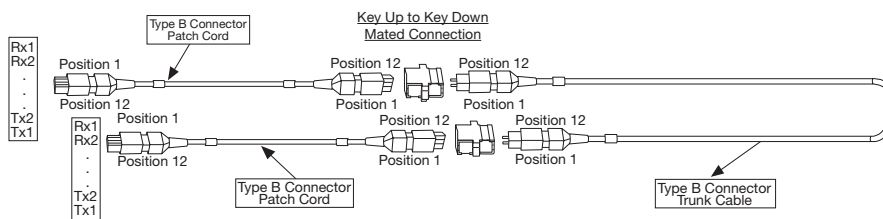
FiberExpress 40G Ethernet Solution

FiberExpress 40G Ethernet Solution

Belden 40G Ethernet solution for two mated connections consists of MPO (female) to MPO (female) Type B patch cords at each end of the channel and an MPO (male) to MPO (male) Type B Trunk cable. The MPO Type B trunk cable is

connected Key Up to Key Down with both MPO Type B patch cords.

All Belden 40G products are Low Loss thus ensuring maximum performance.



FiberExpress 40G MPO Trunk Cables

Fiber Optic MPO Trunk Cable & MPO Patch Cord Performance	Multimode PC Polish OM4, 50 μm, Low Loss
Maximum Insertion Loss (dB)	0.35
Minimum Reflectance (dB)	-20

Description	Belden Part Number	
	Multimode, OM4, 50 μm, Low Loss	
	MPO - 12 fibers	MPO - 24 (2 x 12) fibers

FiberExpress MPO Trunk Cable Assemblies

Type "B" MPO 568-C.3, Mini-distribution Cable (round cable)

MPO (M) - MPO (M), 10 m	F40G0001	F40G0013
MPO (M) - MPO (M), 15 m	F40G0002	F40G0014
MPO (M) - MPO (M), 20 m	F40G0003	F40G0015
MPO (M) - MPO (M), 25 m	F40G0004	F40G0016
MPO (M) - MPO (M), 30 m	F40G0005	F40G0017
MPO (M) - MPO (M), 40 m	F40G0006	F40G0018
MPO (M) - MPO (M), 50 m	F40G0007	F40G0019
MPO (M) - MPO (M), 60 m	F40G0008	F40G0020
MPO (M) - MPO (M), 70 m	F40G0009	F40G0021
MPO (M) - MPO (M), 80 m	F40G0010	F40G0022
MPO (M) - MPO (M), 90 m	F40G0011	F40G0023
MPO (M) - MPO (M), 100 m	F40G0012	F40G0024

Description	Belden Part Number
	Multimode, OM4, 50 μm, Low Loss MPO - 12 fibers

FiberExpress MPO Patch Cords

Type "B" MPO 568-C.3, Mini-distribution Cable (round cable)

MPO (F) - MPO (F), 1 m	F40G0025
MPO (F) - MPO (F), 2 m	F40G0026
MPO (F) - MPO (F), 3 m	F40G0027
MPO (F) - MPO (F), 4 m	F40G0028
MPO (F) - MPO (F), 5 m	F40G0029

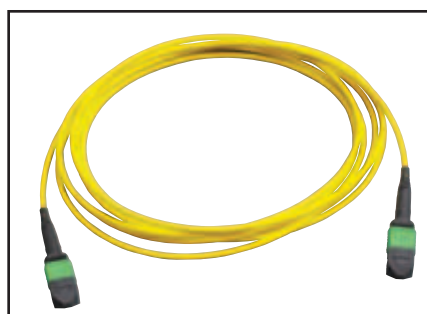
Part Numbers listed for most popular MPO Trunk Cables - 12 and 24 (2x12) fibers.
Please contact Belden for other MPO 40G Trunk Cable Assemblies, Patch Cords and lengths.

FiberExpress Pre-Connectorized Assemblies (continued)

FiberExpress MPO Trunk Cables - 12 fibers



FA600150, MPO(F) - MPO(F), OM3 (50 µm), Type C - Cross-Over Assembly



FA600177, MPO(F) - MPO(F), Single-mode, Type C - Cross-Over Assembly

MPO Trunk Cables - 12 fibers

FiberExpress MPO Trunk Cables are multi-fiber cables using single 12-fiber MPO connectors that are used to interconnect pre-terminated devices such as FiberExpress Pre-Terminated Modules and FiberExpress Bars.

FiberExpress MPO Trunk Cables are made with a Mini-distribution Plenum cable (round cable). They come with MPO female connectors at both

ends. They are offered in Type C 568-C.3 cross-over assemblies and Type A 568-C.3 straight assemblies. OM4 MPO trunk cables are Low Loss thus ensuring maximum performance.

FiberExpress MPO Trunk Cables equal or longer than 10 meters come by default with a pulling eye at the outside end of the assembly.

Fiber Optic MPO Trunk Cable Performance	Multimode PC Polish		Single-mode Polish
	Standard	Low Loss*	
Maximum Insertion Loss (dB)	0.5	0.35	0.75
Minimum Reflectance (dB)	-20	-20	-65

* Low Loss used for OM4 (50 µm) fiber

Description	Belden Part Number			
	Multimode, OM1, 62.5 µm	Multimode, OM3, 50 µm	Multimode, OM4, 50 µm, Low Loss*	Single-mode, OS2

FiberExpress MPO Trunk Cables-12 fibers

Type "C" MPO 568-C.3 Cross-Over, Mini-distribution cable (round cable)

MPO (F) - MPO (F), 12 fibers, 3 m	FA600135	FA600149	FA600163	FA600177
MPO (F) - MPO (F), 12 fibers, 5 m	FA600136	FA600150	FA600164	FA600178
MPO (F) - MPO (F), 12 fibers, 10 m	FA600137	FA600151	FA600165	FA600179
MPO (F) - MPO (F), 12 fibers, 15 m	FA600138	FA600152	FA600166	FA600180
MPO (F) - MPO (F), 12 fibers, 20 m	FA600139	FA600153	FA600167	FA600181
MPO (F) - MPO (F), 12 fibers, 25 m	FA600140	FA600154	FA600168	FA600182
MPO (F) - MPO (F), 12 fibers, 30 m	FA600141	FA600155	FA600169	FA600183
MPO (F) - MPO (F), 12 fibers, 40 m	FA600142	FA600156	FA600170	FA600184
MPO (F) - MPO (F), 12 fibers, 50 m	FA600143	FA600157	FA600171	FA600185
MPO (F) - MPO (F), 12 fibers, 60 m	FA600144	FA600158	FA600172	FA600186
MPO (F) - MPO (F), 12 fibers, 70 m	FA600145	FA600159	FA600173	FA600187
MPO (F) - MPO (F), 12 fibers, 80 m	FA600146	FA600160	FA600174	FA600188
MPO (F) - MPO (F), 12 fibers, 90 m	FA600147	FA600161	FA600175	FA600189
MPO (F) - MPO (F), 12 fibers, 100 m	FA600148	FA600162	FA600176	FA600190

Type "A" MPO 568-C.3 Straight, Mini-distribution cable (round cable)

MPO (F) - MPO (F), 12 fibers, 3 m	FA600191	FA600205	FA600219	FA600233
MPO (F) - MPO (F), 12 fibers, 5 m	FA600192	FA600206	FA600220	FA600234
MPO (F) - MPO (F), 12 fibers, 10 m	FA600193	FA600207	FA600221	FA600235
MPO (F) - MPO (F), 12 fibers, 15 m	FA600194	FA600208	FA600222	FA600236
MPO (F) - MPO (F), 12 fibers, 20 m	FA600195	FA600209	FA600223	FA600237
MPO (F) - MPO (F), 12 fibers, 25 m	FA600196	FA600210	FA600224	FA600238
MPO (F) - MPO (F), 12 fibers, 30 m	FA600197	FA600211	FA600225	FA600239
MPO (F) - MPO (F), 12 fibers, 40 m	FA600198	FA600212	FA600226	FA600240
MPO (F) - MPO (F), 12 fibers, 50 m	FA600199	FA600213	FA600227	FA600241
MPO (F) - MPO (F), 12 fibers, 60 m	FA600200	FA600214	FA600228	FA600242
MPO (F) - MPO (F), 12 fibers, 70 m	FA600201	FA600215	FA600229	FA600243
MPO (F) - MPO (F), 12 fibers, 80 m	FA600202	FA600216	FA600230	FA600244
MPO (F) - MPO (F), 12 fibers, 90 m	FA600203	FA600217	FA600231	FA600245
MPO (F) - MPO (F), 12 fibers, 100 m	FA600204	FA600218	FA600232	FA600246

Part numbers listed for most popular MPO Trunk Cables - 12 fibers. For other MPO Trunk Cable options and lengths refer to the Product Engineering Code Guideline (Page 27).

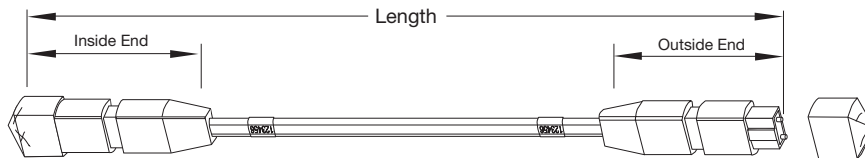
One Enterprise.
One Infrastructure.
One Partner.



FiberExpress Pre-Connectorized Assemblies (continued)

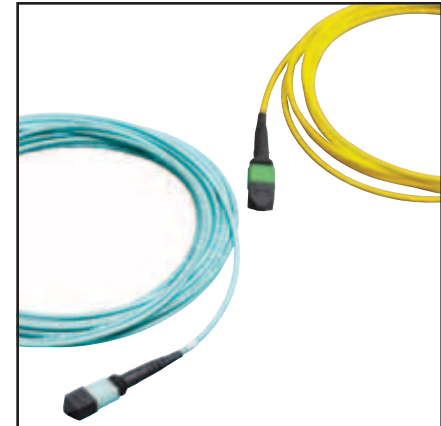
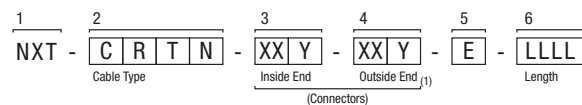
FiberExpress MPO Trunk Cables - 12 fibers

MPO Trunk Cables - 12 fibers



Product Engineering Code (PEC) - GUIDELINE

Use the following options to determine the Product Engineering code (PEC) and order custom combination of cable type, connectors and length required.



FiberExpress MPO Trunk Cables - 12 fibers

1 NXT identifies the product family for MPO assemblies up to 12 fibers

2 Select Cable Type

C	Cable Construction	R	Fire Rating	T	Fiber Type	N	Fiber Count
U	Mini-Distribution (2)	P	OFNP - Plenum	M	OM1 - 62.5 μm Multimode	L	12 Fibers
R	Ribbon (6)	E	Indoor / Outdoor Plenum	N	OM2 - 50 μm Multimode		
				F	OM3 - 50 μm Multimode		
				G	OM4 - 50 μm Multimode		
				S	OS2 - Single-mode		

3 and 4 Inside End and Outside End (Connectors)

XX	Connectors	Y	Polish / Performance Level
PH	12-fiber MPO female	P	PC - Physical Contact Multimode
PG	12-fiber MPO male	A	APC - Angled Polish Contact Single-mode
ZZ	OPEN (3)	L	Low Loss - Used for OM4 (50 μm) fiber
		X	For Type "C" MPO 568-C.3 Cross-Over (4)
		Z	Not applicable (3)

5 Pulling Eye

E	Pulling Eye
N	None
O	At Outside End (5)

6 Length

LLLL is the length from ferrule to ferrule in meters: 0003, 07.5, 0010, 0030, 0100, etc.

Examples:

PEC Code	Description
NXT-UPFL-PHX-PHP-0-0015	MPO trunk cable, Mini-distribution cable, Plenum, OM3 (50 μm), 12 fibers, MPO(F)/PC - MPO(F)/PC, X-over Type C, 1 pulling eye, 15 m
NXT-UPGL-PHL-PHL-0-0018	MPO trunk cable, Mini-distribution cable, Plenum, OM4 (50 μm), 12 fibers, MPO(F)/PC - MPO(F)/PC, Low Loss, 1 pulling eye, 18 m
NXT-UPSL-PHA-PHA-0-0035	MPO trunk cable, Mini-distribution cable, Plenum, Single-mode, 12 fibers, MPO(F)/APC - MPO(F)/APC, 1 pulling eye, 35 m

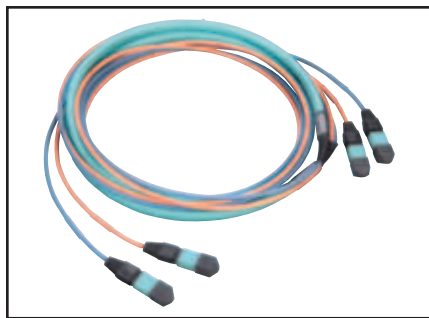
Notes:

- (1) Outside end refers to the pulling side.
- (2) Mini-distribution cable is a round cable with sub-units of 12 Loose tube fibers each.
- (3) Only for Outside End. It's used for pigtails.
- (4) Only for Inside End. It's used for Type "C" MPO 568-C.3 Cross-Over assemblies.
- (5) Pulling eye is strongly recommended for assemblies longer than 10m.
- (6) Ribbon Cable is only used for type "A" MPO 568-C.3 Straight assemblies.

Please contact Belden to validate your PEC Code and for any other fiber cable assembly combinations not available in this guideline.

FiberExpress Pre-Connectorized Assemblies (continued)

FiberExpress MPO Trunk Cables - 24 (2x12) fibers



FA400261, MPO(F) - MPO(F), 24 (2x12) Fibers, OM3 (50 μm), Type C - Cross-Over Assembly

MPO Trunk Cables - 24 (2x12) fibers

FiberExpress MPO Trunk Cables 24 (2x12) fibers have two 12-fiber MPO connectors at each end. They are used to interconnect pre-terminated devices such as FiberExpress Pre-Terminated Modules and FiberExpress Bars.

FiberExpress MPO Trunk cables are made with a Mini-distribution Plenum cable (round cable). They come with MPO female connectors at both ends. They are offered in Type C 568-C.3 cross-

over assemblies and Type A 568-C.3 straight assemblies. OM4 MPO trunk cables are Low Loss thus ensuring maximum performance. The fan-out (legs) are by default 1 meter long, 3.0 mm jacketed and in-line.

FiberExpress MPO Trunk Cables longer or equal than 10 meters come by default with a pulling eye at the outside end of the assembly.

Fiber Optic MPO Trunk Cable Performance	Multimode PC Polish		Single-mode Polish
	Standard	Low Loss*	
Maximum Insertion Loss (dB)	0.5	0.35	0.75
Minimum Reflectance (dB)	-20	-20	-65

* Low Loss used for OM4 (50 μm) fiber

Description	Belden Part Number			
	Multimode, OM1, 62.5 μm	Multimode, OM3, 50 μm	Multimode, OM4, 50 μm, Low Loss	Single-mode, OS2

FiberExpress MPO Trunk Cable Assemblies - 24 (2 x 12) fibers

Type "C" MPO 568-C.3 Cross-Over, Mini-distribution cable (round cable)

MPO (F) - MPO (F), 24 (2x12) fibers, 3 m	FA400247	FA400261	FA400275	FA400289
MPO (F) - MPO (F), 24 (2x12) fibers, 5 m	FA400248	FA400262	FA400276	FA400290
MPO (F) - MPO (F), 24 (2x12) fibers, 10 m	FA400249	FA400263	FA400277	FA400291
MPO (F) - MPO (F), 24 (2x12) fibers, 15 m	FA400250	FA400264	FA400278	FA400292
MPO (F) - MPO (F), 24 (2x12) fibers, 20 m	FA400251	FA400265	FA400279	FA400293
MPO (F) - MPO (F), 24 (2x12) fibers, 25 m	FA400252	FA400266	FA400280	FA400294
MPO (F) - MPO (F), 24 (2x12) fibers, 30 m	FA400253	FA400267	FA400281	FA400295
MPO (F) - MPO (F), 24 (2x12) fibers, 40 m	FA400254	FA400268	FA400282	FA400296
MPO (F) - MPO (F), 24 (2x12) fibers, 50 m	FA400255	FA400269	FA400283	FA400297
MPO (F) - MPO (F), 24 (2x12) fibers, 60 m	FA400256	FA400270	FA400284	FA400298
MPO (F) - MPO (F), 24 (2x12) fibers, 70 m	FA400257	FA400271	FA400285	FA400299
MPO (F) - MPO (F), 24 (2x12) fibers, 80 m	FA400258	FA400272	FA400286	FA400300
MPO (F) - MPO (F), 24 (2x12) fibers, 90 m	FA400259	FA400273	FA400287	FA400301
MPO (F) - MPO (F), 24 (2x12) fibers, 100 m	FA400260	FA400274	FA400288	FA400302

Type "A" MPO Straight Assemblies, Mini-distribution cable (round cable)

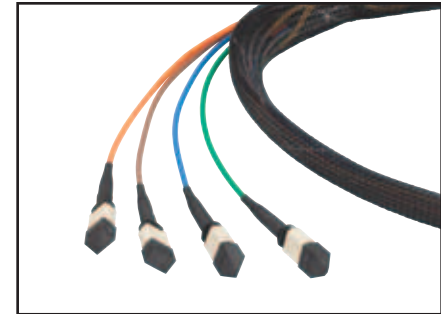
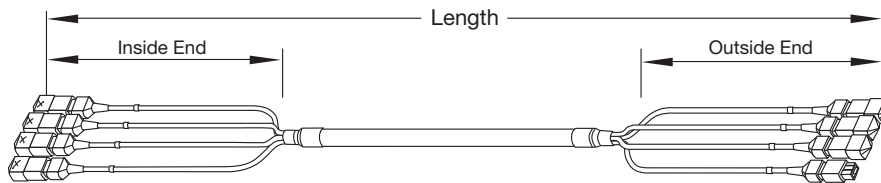
MPO (F) - MPO (F), 24 (2x12) fibers, 3 m	FA400303	FA400317	FA400331	FA400345
MPO (F) - MPO (F), 24 (2x12) fibers, 5 m	FA400304	FA400318	FA400332	FA400346
MPO (F) - MPO (F), 24 (2x12) fibers, 10 m	FA400305	FA400319	FA400333	FA400347
MPO (F) - MPO (F), 24 (2x12) fibers, 15 m	FA400306	FA400320	FA400334	FA400348
MPO (F) - MPO (F), 24 (2x12) fibers, 20 m	FA400307	FA400321	FA400335	FA400349
MPO (F) - MPO (F), 24 (2x12) fibers, 25 m	FA400308	FA400322	FA400336	FA400350
MPO (F) - MPO (F), 24 (2x12) fibers, 30 m	FA400309	FA400323	FA400337	FA400351
MPO (F) - MPO (F), 24 (2x12) fibers, 40 m	FA400310	FA400324	FA400338	FA400352
MPO (F) - MPO (F), 24 (2x12) fibers, 50 m	FA400311	FA400325	FA400339	FA400353
MPO (F) - MPO (F), 24 (2x12) fibers, 60 m	FA400312	FA400326	FA400340	FA400354
MPO (F) - MPO (F), 24 (2x12) fibers, 70 m	FA400313	FA400327	FA400341	FA400355
MPO (F) - MPO (F), 24 (2x12) fibers, 80 m	FA400314	FA400328	FA400342	FA400356
MPO (F) - MPO (F), 24 (2x12) fibers, 90 m	FA400315	FA400329	FA400343	FA400357
MPO (F) - MPO (F), 24 (2x12) fibers, 100 m	FA400316	FA400330	FA400344	FA400358

Part numbers listed for most popular MPO Trunk Cables - 24 (2x12) fibers. For other MPO Trunk Cable options and lengths refer to the Product Engineering Code Guideline (Page 29).



FiberExpress Pre-Connectorized Assemblies (continued)
FiberExpress MPO Trunk Cables - 24, 48, 72, 96 and 144 fibers

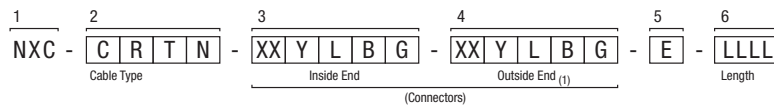
MPO Trunk Cables - 24, 48, 72, 96 and 144 fibers



FiberExpress MPO Trunk Cable, 48 (4x12) Fibers

Product Engineering Code (PEC) - GUIDELINE

Use the following options to determine the Product Engineering code (PEC) and order custom combination of cable type, connectors and length required.



1 NXC identifies the product family for MPO assemblies 24, 48, 72, 96 and 144 fibers (12-fiber MPO connector).

2 Select Cable Type

C	Cable Construction	R	Fire Rating	T	Fiber Type	N	Fiber Count
U	Mini-Distribution (2)	P	OFNP - Plenum	M	OM1 - 62.5 μm Multimode	X	24 Fibers
		E	Indoor / Outdoor Plenum	N	OM2 - 50 μm Multimode	V	48 Fibers
				F	OM3 - 50 μm Multimode	T	72 Fibers
				G	OM4 - 50 μm Multimode	M	96 Fibers
				S	OS2 - Single-mode	Z	144 Fibers

3 and 4 Inside End and Outside End (Connectors)

XX	Connectors	Y	Polish / Performance Level
PH	12-fiber MPO female	P	PC - Physical Contact Multimode
PG	12-fiber MPO male	A	APC - Angled Polish Contact Single-mode
ZZ	OPEN (3)	L	Low Loss - Used for OM4 (50 μm) fiber
		X	For Type "C" MPO 568-C.3 Cross-Over (4)
		Z	Not applicable (3)

Fan-out

L	Fan-Out Length	B	Fan-Out Construction	G	Fan-Out Geometry	E	Pulling Eye
C	0.5 m	G	3.0 mm jacket	N	In line or None	O	At Outside end (5)
F	1 m	N	None (3)	A	Staggered 25 mm	N	None
G	2 m			B	Staggered 50 mm		
N	None (3)						

5 Pulling Eye

6 Length

LLLL is the length from ferrule to ferrule in meters: 0010, 15.5, 0030, 0100, etc.

PEC Code	Description
NXC-UPFX-PHXFGN-PHPFGN-0-0075	MPO Trunk cable, Mini-distribution cable, Plenum, OM3 (50 μm), 24 (2x12) fibers, MPO(F)/PC - MPO(F)/PC, X-over Type C, Fan-out Length: 1 m, Fan-out Construction: 3.0 mm, Fan-out Geometry: In Line, 1 pulling eye, 75 m
NXC-UPSV-PHXFGN-PHAFGN-0-0030	MPO Trunk cable, Mini-distribution cable, Plenum, Single-mode, 48 (4x12) fibers, MPO(F)/APC - MPO(F)/APC, X-over Type C, Fan-out Length: 1 m, Fan-out Construction: 3.0 mm, Fan-out Geometry: In Line, 1 pulling eye, 30 m

Please contact Belden to validate your PEC Code and for any other fiber cable assembly combinations not available in this guideline.

Notes:

- (1) Outside end refers to the pulling side.
- (2) Mini-distribution cable is a round cable with sub-units of 12 Loose tube fibers each.
- (3) Only for Outside End. It's used for pigtails.
- (4) Only for Inside End. It's used for Type "C" MPO 568-C.3 Cross-Over assemblies.
- (5) Pulling eye is strongly recommended for assemblies longer than 10m.

FiberExpress Pre-Connectorized Assemblies (continued)

Multi-fiber Cable Assemblies

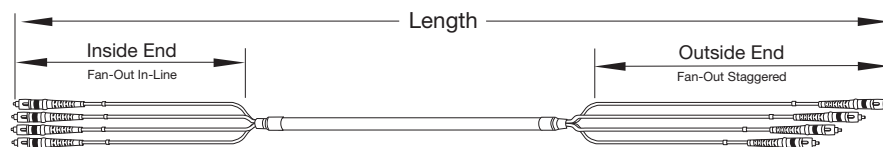


Multi-fiber Cable Assembly

Multi-fiber Cable Assemblies

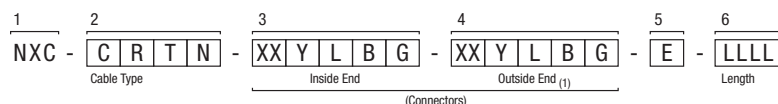
Multi-fiber Cable Assemblies are factory terminated fiber cables of various constructions (distribution, breakout, Loose tube) using Simplex, Duplex or Multi-fiber connectors.

They are available in configurations from 6 fibers up to 144 fibers with various kinds of fan-out constructions, lengths and geometry to suit virtually any application.



Product Engineering Code (PEC) – GUIDELINE

Use the following options to determine the Product Engineering code (PEC) and order custom combination of cable type, connectors and length required.



1 NXC identifies the product family for all fiber cable assemblies

2 Select Cable Type

C	Cable Construction	R	Fire Rating	T	Fiber Type	N	Fiber Count
M	Distribution cable	R	OFNR - Riser	M	OM1 - 62.5 μm Multimode	6	6 Fibers
P	Breakout 2.0 mm units	P	OFNP - Plenum	N	OM2 - 50 μm Multimode	L	12 Fibers
U	Mini-distribution (2)	B	Plenum Indoor Armored	F	OM3 - 50 μm Multimode	X	24 Fibers Sub-units
O	Loose Tube	D	Outdoor	G	OM4 - 50 μm Multimode	C	24 Fibers Non-terminated (3)
		E	Indoor / Outdoor Plenum	S	OS2 - Single-mode	V	48 Fibers
						T	72 Fibers
						M	96 Fibers
						Z	144 Fibers

3 and 4 Inside End and Outside End (Connectors)

XX	Connectors	Y	Polish / Performance Level
LC	LC Simplex	P	PC - Physical Contact Multimode
LD	LC Duplex	S	SPC - Super Physical Contact Single-mode
SC	SC Simplex	U	UPC - Ultra Physical Contact Single-mode
SD	SC Duplex	E	EUPC - Enhanced UPC Single-mode (6)
ST	ST	A	APC - Angled Polish Contact Single-mode
PH	12-fiber MPO female	L	Low Loss - Used for OM4 (50 μm) fiber
PG	12-fiber MPO male	Z	Not applicable (4)
LM	mSFP (Mini LC)		
ZZ	OPEN (4)		

Fan-out

5 Pulling Eye

L	Fan-Out Length	B	Fan-Out Construction	G	Fan-Out Geometry	E	Pulling Eye
C	0.5 m	B	900 μm Tight buffer	N	In line or None	O	At Outside end (5)
F	1 m	E	2.0 mm jacket	A	Staggered 25 mm	N	None
G	2 m	G	3.0 mm jacket	B	Staggered 50 mm		
N	None (4)	N	None (4)				



FiberExpress Pre-Connectorized Assemblies (continued)

Multi-fiber Cable Assemblies

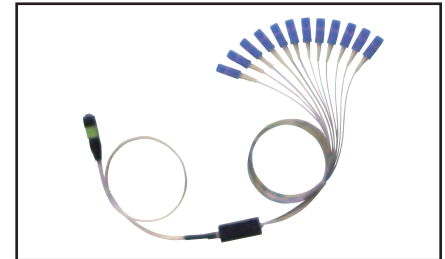
6 Length

LLLL is the length from tip to tip in meters: 0001, 0005, 0015, 0100, etc.

Examples:

PEC Code	Description
NXC-MRFL-LCPFBN-LCPFBN-0-0015	FO cable assembly, Distribution cable, Riser, OM3(50 μm), 12 fibers, LC/PC - LC/PC, Fan-out: 1 m - 900 μm - In line, with pulling eye, 15 m
NXC-UPFV-LDPFEN-PGPFEN-N-0020	FO cable assembly, Mini-distribution cable, Plenum, OM3 (50 μm), 48 fibers, LC Duplex/PC - MPO (m)/PC, Fan-out: 1 m - 2.0 mm(LC) & 3.0 mm (MPO) - In Line, No pulling eye, 20 m

Please contact Belden to validate your PEC Code and for any other fiber cable assembly combinations not available in this guideline.



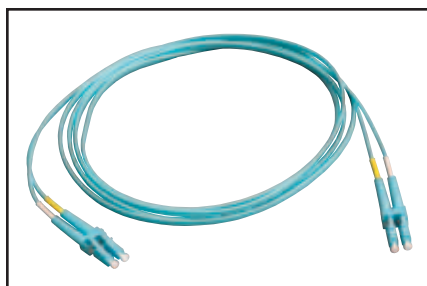
900 μm Fan-out Assembly

Notes:

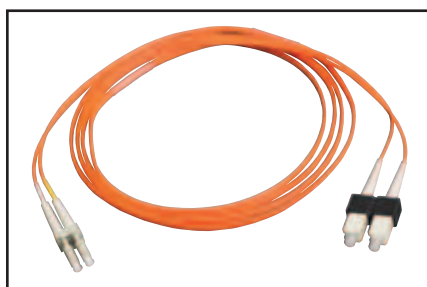
- (1) Outside end refers to the pulling side.
- (2) Mini-distribution cable is a round cable with sub-units of 12 Loose tube fibers each. It's used for MPO assemblies.
- (3) Single jacket design. It's only used for Distribution cable
- (4) Only for Outside End. It's used for pigtailed.
- (5) Pulling eye is strongly recommended for assemblies longer than 10m
- (6) EUJPC Minimum Reflectance: -60 dB.

FiberExpress Pre-Connectorized Assemblies (continued)

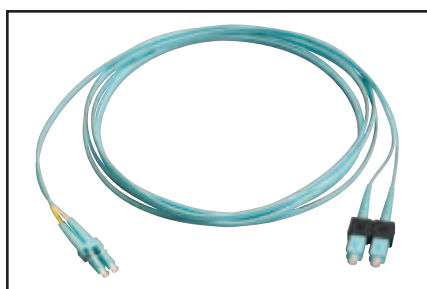
FiberExpress Patch Cords



AX200664, FiberExpress Duplex Patch Cord, LC Duplex - LC Duplex, OM3, 50 µm



AX200580, FiberExpress Hybrid Patch Cord, LC Duplex - SC Duplex, OM1, 62.5 µm



AX200668, FiberExpress Hybrid Patch Cord, LC Duplex - SC Duplex, OM3, 50 µm

FiberExpress Patch Cords

FiberExpress Patch Cords are of the highest quality available. They are assembled and 100% optically tested in the factory prior to

shipment. All patch cords are built with high quality connectors and cables which guarantees superior performance and excellent reliability.

Fiber Optic Patch Cord Performance	Multimode PC Polish		Single-mode Polish		
	Standard	Low Loss*	SPC	UPC	APC
Maximum Insertion Loss (dB)	0.25	0.15	0.25	0.25	0.25
Minimum Reflectance (dB)	-20	-20	-40	-55	-65

* Low Loss used for OM4 (50 µm) fiber.

Color of Housing	Multimode, OM1, 62.5 µm	Multimode, OM2, 50 µm	Multimode, OM3 - OM4, 50 µm	Single-mode, OS2	Single-mode, OS2 - APC
LC	Beige	Black	Aqua	Blue	Green
SC	Beige	Black	Aqua	Blue	Green
ST	Metal	Metal	Metal	Metal	-

Description	Belden Part Number		
	Multimode, OM1, 62.5 µm	Multimode, OM2, 50 µm	Multimode, OM3, 50 µm

FiberExpress Multimode Patch Cords

Duplex Patch Cord, OFNR-Riser

LC Duplex - LC Duplex, 2 m (6 ft), Duplex Zip Cord 2.0 mm	AX200517	AX200527	AX200664
LC Duplex - LC Duplex, 3 m (10 ft), Duplex Zip Cord 2.0 mm	AX200518	AX200528	AX200665
LC Duplex - LC Duplex, 5 m (16 ft), Duplex Zip Cord 2.0 mm	AX200519	AX200529	AX200666
SC Duplex - SC Duplex, 2 m (6 ft), Duplex Zip Cord 3.0 mm	AX200056	AX200084	AX200603
SC Duplex - SC Duplex, 3 m (10 ft), Duplex Zip Cord 3.0 mm	AX200057	AX200082	AX200589
SC Duplex - SC Duplex, 5 m (16 ft), Duplex Zip Cord 3.0 mm	AX200058	AX200280	AX200624
ST - ST 2 m (6 ft), Duplex Zip Cord 3.0 mm	70102419	AX200341	AX200799
ST - ST 3 m (10 ft), Duplex Zip Cord 3.0 mm	70102420	AX200459	AX200795
ST - ST 5 m (16 ft), Duplex Zip Cord 3.0 mm	70102447	AX200413	AX200800

Hybrid Patch Cord, OFNR-Riser

LC Duplex - SC Duplex, 3 m (10 ft), Duplex Zip Cord 2.0 mm	AX200580	AX200581	AX200668
LC Duplex - ST, 3 m (10 ft), Duplex Zip Cord 2.0 mm	AX200699	AX200695	AX200809
SC Duplex - ST, 3 m (10 ft), Duplex Zip Cord 3.0 mm	AX200060	AX200196	AX200900

Single-ended (pigtails), OFN

LC - OPEN, 2 m (6 ft), Simplex 900 µm Tight buffer	AX200657	AX200658	AX200660
SC - OPEN, 2 m (6 ft), Simplex 900 µm Tight buffer	70101714	AX200192	AX200653
ST - OPEN, 2 m (6 ft), Simplex 900 µm Tight buffer	70100390	AX200458	AX200811

Description	Belden Part Number		
	Multimode, OM4, 50 µm, Low Loss		

FiberExpress Multimode OM4 Low Loss Patch Cords

Duplex Patch Cord, OFNR-Riser

LC Duplex - LC Duplex, 2 m (6 ft), Duplex Zip Cord 2.0mm	AX104647
LC Duplex - LC Duplex, 3 m (10 ft), Duplex Zip Cord 2.0mm	AX104648
LC Duplex - LC Duplex, 5 m (16 ft), Duplex Zip Cord 2.0mm	AX104649

Single-ended (pigtails)

LC - OPEN, 2 m (6 ft), Simplex 900 µm Tight buffer	AX104650
--	----------

Part numbers listed for most popular patch cords. For additional cable type, connectors and lengths refer to the Product Engineering Code Guideline (Page 34).

One Enterprise.
One Infrastructure.
One Partner.



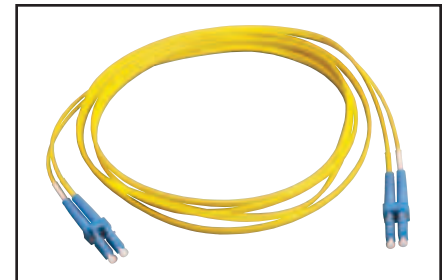
FiberExpress Pre-Connectorized Assemblies (continued)

FiberExpress Patch Cords

Description	Belden Part Number	
	Single-mode, OS2 - UPC	Single-mode, OS2 - APC

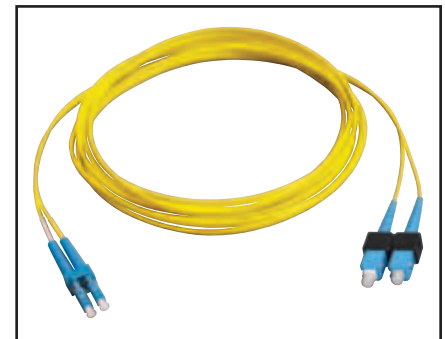
FiberExpress Single-mode Patch Cords

Duplex Patch Cord, OFNR-Riser		
LC Duplex - LC Duplex, 2 m (6 ft), Duplex Zip Cord 2.0 mm	AX200507	AX203910
LC Duplex - LC Duplex, 3 m (10 ft), Duplex Zip Cord 2.0 mm	AX200508	AX203911
LC Duplex - LC Duplex, 5 m (16 ft), Duplex Zip Cord 2.0 mm	AX200509	AX203912
SC Duplex - SC Duplex, 2 m (6 ft), Duplex Zip Cord 3.0 mm	AX203908	AX202902
SC Duplex - SC Duplex, 3 m (10 ft), Duplex Zip Cord 3.0 mm	AX202523	AX203870
SC Duplex - SC Duplex, 5 m (16 ft), Duplex Zip Cord 3.0 mm	AX203909	AX202835
ST - ST 2 m (6 ft), Duplex Zip Cord 3.0 mm	AX200200	-
ST - ST 3 m (10 ft), Duplex Zip Cord 3.0 mm	AX202089	-
ST - ST 5 m (16 ft), Duplex Zip Cord 3.0 mm	AX200234	-



AX200507, FiberExpress Duplex Patch Cord, LC Duplex - LC Duplex, Single-mode, UPC

Hybrid Patch Cord, OFNR-Riser		
LC Duplex - SC Duplex, 3 m (10 ft), Duplex Zip Cord 2.0 mm	AX200667	AX203913
LC Duplex - ST, 3 m (10 ft), Duplex Zip Cord 2.0 mm	AX200698	-
SC Duplex - ST, 3 m (10 ft), Duplex Zip Cord 3.0 mm	AX201905	-



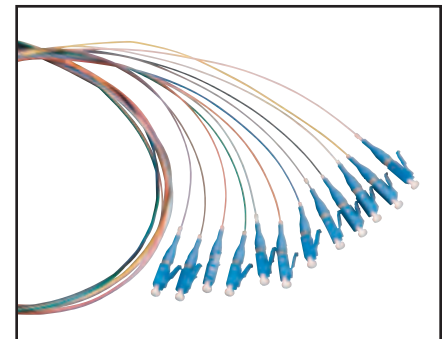
AX200667, FiberExpress Hybrid Patch Cord, LC Duplex - SC Duplex, Single-mode, UPC

Single-ended (pigtailed), OFN		
LC - OPEN, 2 m (6 ft), Simplex 900 μ m Tight buffer	AX200659	AX203162
SC - OPEN, 2 m (6 ft), Simplex 900 μ m Tight buffer	AX200147	AX203390
ST - OPEN, 2 m (6 ft), Simplex 900 μ m Tight buffer	AX200138	-

Description	Belden Part Number			
	Multimode, OM1, 62.5 μ m	Multimode, OM3, 50 μ m	Multimode, OM4 Low Loss, 50 μ m	Single-mode, OS2 - UPC

FiberExpress Color-Coded Pigtail Kits

Pigtail Kits				
LC Color-Coded Pigtail Kit 12 fibers 2 m (6 ft) long	AX104651	AX104555	AX104655	AX104557
SC Color-Coded Pigtail Kit 12 fibers 2 m (6 ft) long	AX104652	AX104556	-	AX104558
ST Color-Coded Pigtail Kit 12 fibers 2 m (6 ft) long	AX104653	AX104654	-	AX104656

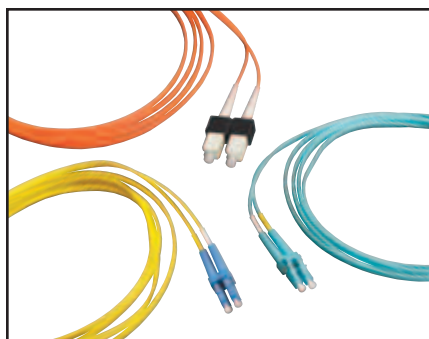


AX104557, FiberExpress LC Color-Coded Pigtail Kit, Single-mode

Part numbers listed for most popular patch cords. For additional cable type, connectors and lengths refer to the Product Engineering Code Guideline (Page 34).

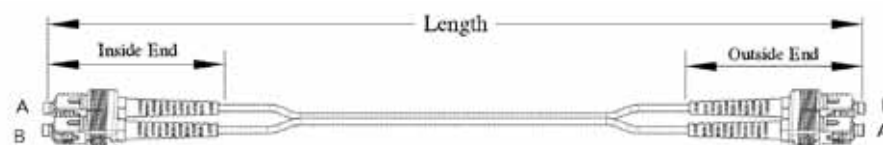
FiberExpress Pre-Connectorized Assemblies (continued)

FiberExpress Patch Cords



FiberExpress Patch Cords

Simplex - Duplex and Single-ended Pigtails



Product Engineering Code (PEC) - GUIDELINE

Use the following options to determine the PEC and order custom combination of cable type, connectors and length required.

¹ NXF - ²

C	R	T	N
---	---	---	---

 - ³

XX	Y
----	---

 - ⁴

XX	Y
----	---

 - ⁵

LLLL

Cable Type Inside End Outside End₍₁₎ Length
 (Connectors)

1 NXF identifies the product family for Simplex/Duplex patch cords and single-ended pigtails.

2 Select Cable Type

C	Cable Construction	R	Fire Rating	T	Fiber Type	N	Fiber Count
A	Simplex 900 μm Tight buffer	R	OFNR - Riser	M	OM1 - 62.5 μm Multimode	1	1 fiber
C	Simplex Cord 2.0 mm	P	OFNP - Plenum	N	OM2 - 50 μm Multimode	2	2 fibers
E	Simplex Cord 3.0 mm	N	OFN (3)	F	OM3 - 50 μm Multimode		
F	Duplex Zip Cord 2.0 mm			G	OM4 - 50 μm Multimode		
H	Duplex Zip Cord 3.0 mm			S	OS2 - Single-mode		
J	2-fiber Round Jacket 3.0 mm (2)						

3 and 4 Inside End and Outside End (Connectors)

XX	Connectors	Y	Polish / Performance Level
LC	LC Simplex	P	PC - Physical Contact Multimode
LD	LC Duplex	S	SPC - Super Physical Contact Single-mode (5)
SC	SC Simplex	U	UPC - Ultra Physical Contact Single-mode
SD	SC Duplex	E	EUPC - Enhanced UPC Single-mode (6)
ST	ST	A	APC - Angled Polish Contact Single-mode
FC	FC	L	Low Loss - Used for OM4 (50 μm) fiber
JA	MT-RJ female	Z	Not applicable (4)
LM	mSFP (Mini LC)		
ZZ	OPEN (4)		

5 Length

LLLL is the length from ferrule to ferrule in meters: 0001, 02.5, 0005, 0015, 0100, etc.

Examples:

PEC Code	Description
NXF-FRF2-LDP-SDP-0005	FO patch cord, Duplex Zip 2.0 mm, Riser, OM3 (50 μm), 2 fibers, LC Duplex/PC - SC Duplex/PC, 5 m
NXF-FRG2-LDL-LDL-0004	FO patch cord, Duplex Zip 2.0 mm, Riser, OM4 (50 μm), 2 fibers, LC Duplex/PC - LC Duplex/PC, Low Loss, 4 m
NXF-ERS1-SCA-SCA-0002	FO patch cord, Simplex 3.0 mm, Riser, Single-mode, 1 fiber, SC/APC - SC/APC, 2 m

Please contact Belden to validate your PEC Code and for any other fiber cable assembly combinations not available in this guideline.

Notes:

- (1) Outside end refers to the pulling side.
Not to be considered for short length patch cords.
- (2) Only used for MT-RJ patch cords.
- (3) Only for Simplex 900μm Tight buffer cable construction.
- (4) Only for Outside End. It's used for pigtails.
- (5) Only used for MT-RJ patch cords.
- (6) EUPC Minimum Reflectance: -60 dB.

One Enterprise.
One Infrastructure.
One Partner.



FiberExpress Pre-Connectorized Assemblies (continued)

FiberExpress Bar and Accessories

FiberExpress Bar

The **FiberExpress Bar** consists of a custom length fiber cable with, at one end, a factory pre-terminated rugged mini patch panel and, at the other end, a factory installed multi-fiber MPO connector. The very compact fiber patch panel contains 6 or 12 factory-terminated and tested connectors in a variety of styles. The ruggedness of the **FiberExpress Bar** makes it an ideal candidate for disaster recovery, industrial applications and other fiber deployments in harsh environments.

FiberExpress Bar Accessories

The **MPO Adapter** is the sleeve that provides primary alignment and locking when connecting the two MPO connectors (male to female). It has a flange and a metal clip for panel mounting and it is included with each **FiberExpress Bar** (1 m with male connector).



FA800000, FiberExpress Bar 12 ST



FiberExpress MPO Adapter

Description	Belden Part Number
FiberExpress Pre-Connectorized Assemblies	
FiberExpress Bar Multimode, OM1, 62.5 μm	
LC Duplex – MPO (m), 12 fibers, 1 m	FA800002
SC Duplex – MPO (m), 12 fibers, 1 m	FA800001
ST – MPO (m), 12 fibers, 1 m	FA800000
FiberExpress Bar Multimode, OM2, 50 μm	
LC Duplex – MPO (m), 12 fibers, 1 m	FA800005
SC Duplex – MPO (m), 12 fibers, 1 m	FA800004
ST – MPO (m), 12 fibers, 1 m	FA800003
FiberExpress Bar Multimode, OM3, 50 μm	
LC Duplex – MPO (m), 12 fibers, 1 m	FA800008
SC Duplex – MPO (m), 12 fibers, 1 m	FA800007
ST – MPO (m), 12 fibers, 1 m	FA800006
FiberExpress Bar Multimode, OM4, Low Loss, 50 μm	
LC Duplex - MPO(m), 12 fibers, 1 m	FA800012
FiberExpress Bar Single-mode, OS2	
LC Duplex – MPO (m), 12 fibers, 1 m	FA800011
SC Duplex – MPO (m), 12 fibers, 1 m	FA800010
ST – MPO (m), 12 fibers, 1 m	FA800009
FiberExpress Bar Accessories	
MPO Adapter Flanged, pack of 25 units	AX105007-B25

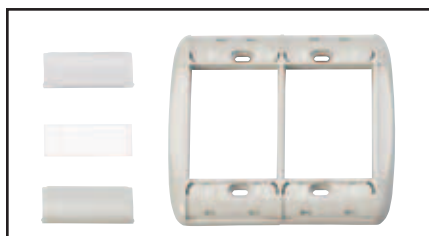
Also available for 6 fibers, please contact Customer Service for more details.

* All FiberExpress Bars above include one MPO adapter.

Please contact Belden for any other FiberExpress Bar options and lengths.

FiberExpress Outlets

MediaFlex® Plates, Adapter Boxes, and Inserts
KeyConnect Workstation Outlet System



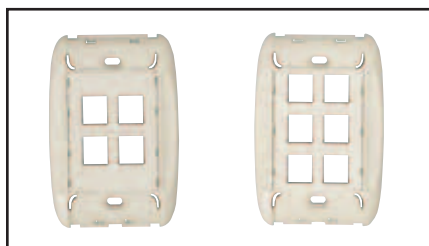
AX101869, MediaFlex Plate, Double-Gang



AX101874, MediaFlex Adapter Box, Double-Gang



AX101937, MediaFlex SC Duplex Insert, Angled



AX102428, AX102430, MediaFlex KeyConnect Faceplate Kit



AX102417, KeyConnect Adapter

MediaFlex Plates, Adapter Boxes, and Inserts

MediaFlex Plates are one part of the comprehensive line of plates and inserts that snap together to create a full line of modular workstation outlets.

MediaFlex Plates and Adapter Boxes can be mounted over standard NEMA type outlet boxes and rings to provide support for a variety of MediaFlex Adapters and Inserts. MediaFlex Plates are available in Single-Gang and Double-Gang configurations.

The MediaFlex Surface Adapter Boxes allow more room for cable management and bend radius control.

MediaFlex Keystone Style Inserts are available in a 2-port configuration in both Flush and Angled versions.

Each modular component of the KeyConnect series seamlessly fits together to suit any data, voice, video or multimedia application. This includes multimode and single-mode optical modules for fiber-to-the-desk applications.

Description	Belden Part Number		
	Almond	White	Black
MediaFlex® Plates and Inserts			
MediaFlex Plates			
Single-gang	AX101746	AX101747	AX101748
Double-gang	AX101870	AX101871	AX101872
MediaFlex Surface Adapter Boxes			
Single-gang	AX102481	AX102482	AX102483
Double-gang	AX101874	AX101875	AX101876
MediaFlex Filler Inserts			
1-unit	AX101758	AX101759	AX101760
2-unit	AX101762	AX101763	AX101764
MediaFlex SC Duplex Inserts, Angled			
SC Duplex Multimode, Beige Adapter	AX101940	AX101941	AX101942
SC Duplex Single-mode, Blue Adapter	AX101936	AX101937	AX101938

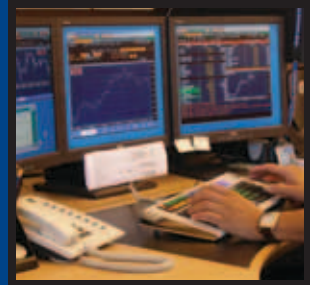
KeyConnect Workstation Outlet System

The KeyConnect Workstation Outlet System is comprised of a wide range of faceplates, adapters,

and boxes, combined with a complete line of KeyConnect UTP, coax and fiber modules.

Description	Belden Part Number		
	Almond	White	Black
KeyConnect Workstation Outlet System			
MediaFlex KeyConnect Faceplate Kit			
4-port, Flush, Single-gang	AX102428	AX102429	AX104489
6-port, Flush, Single-gang	AX102430	AX102431	AX104490
4-port, Angled, Single-gang	AX102432	AX102433	AX104491
MediaFlex KeyConnect (Style) Insert			
2-port, Flush	AX102410	AX102411	AX102737
2-port, Angled	AX102412	AX102413	AX102738
KeyConnect Adapters			
LC Duplex Multimode, Beige Adapter	AX102415	AX102416	AX102417
LC Duplex Multimode OM3-OM4, Aqua Adapter	AX104937	AX104938	AX104939
LC Duplex Single-mode, Blue Adapter	AX102419	AX102420	AX102421
SC Simplex, Multimode, Beige Adapter	AX102683	AX102684	AX102685
SC Simplex, Single-mode, Blue Adapter	AX102686	AX102687	AX102688
ST Multimode/Single-mode	AX102242	AX102243	AX102244

One Enterprise.
One Infrastructure.
One Partner.



FiberExpress Outlets (continued)

MDVO Workstation Outlet System and Outlet Boxes

MDVO Workstation Outlet System

MDVO Workstation Outlet System address audio/video and fiber applications. Fiber modules are

available for LC Duplex, SC Simplex, ST multimode and single-mode connections.

Description	Belden Part Number		
	Almond	White	Black

MDVO Workstation Multimedia Modules

MediaFlex MDVO Faceplate Kit

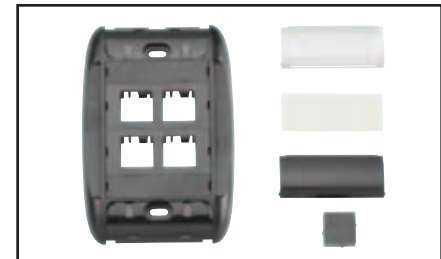
4-port, Flush, Single-gang	AX101783	AX101784	AX101785
6-port, Flush, Single-gang	AX101787	AX101788	AX101789

MediaFlex MDVO (Style) Insert

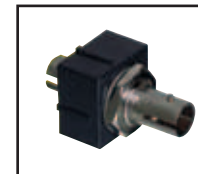
2-port, Flush	AX101750	AX101751	AX101752
2-port, Angled	AX101754	AX101755	AX101756

MDVO Adapters

LC Duplex Multimode	AX102210	AX102211	AX102212
LC Duplex Single-mode	AX102214	AX102215	AX102216
SC Simplex, Multimode	A0407004	A0407005	A0407006
SC Simplex, Single-mode	AX104624-02	AX104624-03	AX104624-04
ST, Multimode	A0407008	A0407009	A0407010



AX101785, MediaFlex MDVO Faceplate Kit



A0407010, MDVO ST Fiber Module



AX101756, MediaFlex MDVO (style) Insert, 2-port, Angled

Multi-User Outlet Box

The Multi-User Outlet Box is a versatile box that can be used in many different applications. The outlet box can accommodate up to 24 connections of any type: UTP, fiber or coax. The outlet box is ideal for use as a multi-user telecommunications assembly, or simply as a

high-density multimedia telecommunications outlet. The Multi-User Outlet Box can also be used as a wall mounted patch panel in confined areas, such as shallow rooms and cabinets.

The SC Duplex Adapter is a fiber adapter sleeve with flanges that mounts into the SC Duplex mounting bezel (included in the MDVO Multimedia Outlet box).

Description	Belden Part Number		
	Almond	White	Black

MDVO Multimedia Outlet Box

6-port	A0643206	A0643207	A0643208
SC Duplex adapter Flanged, Multimode	← A0649254 →		
SC Duplex adapter Flangeless, Single-mode	← AX105002-S1 →		

MDVO Multimedia Outlet Box

The MDVO Multimedia Outlet Box brings unique versatility for multimedia work area installations. The box design provides cable management and helps maintain cable bend radius. The low profile design and side-entry of the outlet box offers better protection for patch cords. The outlet box

can accept up to six MDVO-style modules or three SC Duplex adapters.

The MDVO Multimedia Outlet Box can be mounted directly on the wall or attached to standard electrical boxes. Included with the MDVO Multimedia box are three SC Duplex mounting bezels and three MDVO adapters.

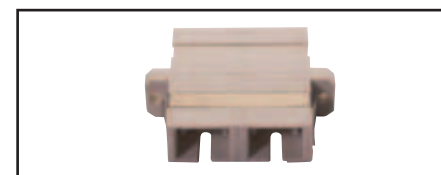
Description	Belden Part Number		
	Almond	White	Black

Multi-User Outlet Box

24-port	AX100220	AX100221	AX100222
---------	----------	----------	----------



A0643207, MDVO Multimedia Outlet Box (shown here as terminated)



A0649254, SC Duplex Adapter



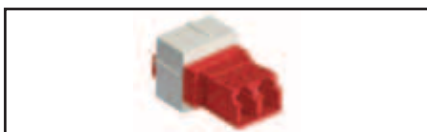
AX100222, Multi-User Outlet Box (shown here with modules)

FiberExpress Secure/Keyed LC System

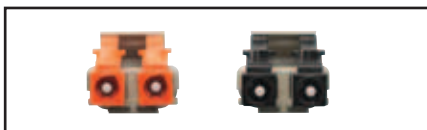
Patch Panel Adapters and Pre-Terminated Cassettes, Connectors and Patch Cords



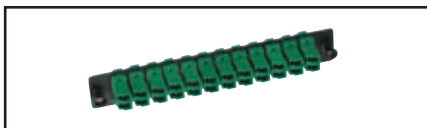
FiberExpress Secure/Keyed LC Manager Module



FiberExpress Secure/Keyed LC Adapter Module



FiberExpress Secure/Keyed LC System



FiberExpress Secure/Keyed LC Adapter Strip



FiberExpress Secure/Keyed LC Optimax Connector



Secured/Keyed LC FiberExpress Ultra Bezel



Secured/Keyed LC FiberExpress Ultra Cassette

FiberExpress Secure/Keyed LC System

The FiberExpress Secure/Keyed LC System allows for physical segregation of network segments in secure fiber cabling infrastructures. All Secure/Keyed LC products are available with 12 different keying options each carrying a different color to facilitate network administration. The keying detail inside the connector is highly tamper-resistant and cannot be reproduced inside a standard LC connector to violate the network security. All products comply with the FOCIS 10 standard and optical performance exceeds all industry standards for SFF connectors.

The Secure/Keyed LC Adapter Modules, Frames, Cassettes and Adapter Strips can be used in all mounting hardware for workstation area, Consolidation Point or Telecom Room applications. The Secure/Keyed LC FiberExpress Manager Modules can be used in 19- and 23-inch FiberExpress Manager Shelves to

provide a high-density management system. The Secure/Keyed LC FiberExpress Ultra Frames, Bezels and Cassettes can be used with the FiberExpress Ultra Rack- and Wall-mount Patch Panels to provide an Ultra high-density patching system that is easy to deploy, operate and maintain, while ensuring maximum uptime, uninterrupted availability and superior performance.

The Secure/Keyed LC Patch Cords and Pigtails are offered in Multimode 62.5 μm (OM1), 50 μm (OM2) and laser-optimized 50 μm (OM3 and OM4) for the most demanding network performance.

The Secure/Keyed LC Brilliance and Optimax Field Installable Connectors are available in Multimode 50 μm laser-optimized and 62.5 μm fiber versions. They are high-quality connectors that use a ceramic ferrule with a physical contact (PC) polish for Multimode connectors.

Description	Splices
FiberExpress Secure/Keyed LC System	
LC Key1	Red
LC Key2	Green
LC Key3	Yellow
LC Key4	Black
LC Key5	Orange
LC Key6	Blue
LC Key7	Violet
LC Key8	Rose
LC Key9	Aqua
LC KeyA	Brown
LC KeyB	Slate
LC KeyC	White

For additional details, please refer to the Secure/Keyed LC System Product Bulletin PB275.

One Enterprise.
One Infrastructure.
One Partner.



Cable Selection Reference

Introduction

The optical fiber cables featured in this section have been expanded to meet advances in technology and the demands of both commercial and industrial applications. Refer to this page for selecting a fiber type, color coding information, and optical specifications. Belden's extensive line of indoor and outdoor cable products is offered in tight buffer and loose tube designs. Armored, burial, and ruggedized designs are suited to a host of industrial environments. For each product design, items for OM1, OM2, OM3, OM4, and OS2 (single-mode) items have been developed. Belden fiber products are third

party tested by either ETL or UL and approved for use according to the National Electric Code.

Customer Service

Many fiber designs are available from stock through our Distributors. For your new or custom application that you do not locate in this section, contact Customer Service at 1-800-Belden-1 (800.235.3361) for additional information or to request a quote. Further product and technical information is also available on our web site at www.belden.com.



Cable Selection Guide

Optical Fiber

Fiber Selection Chart

Type	Fiber Size (μ)	Standard Compliance	Link Length (m)	Data Rate (Gb)
Multimode	50/125	TIA/EIA-568-C.3 / ISO 11801 OM4	550	10
	50/125	TIA/EIA-568-C.3 / ISO 11801 OM3	300	10
	50/125	TIA/EIA-568-C.3 / ISO 11801 OM2	600	1
	62.5/125	TIA/EIA-568-C.3 / ISO 11801 OM1	300	1
Single-mode	—	ITU G.652.c/d†	—	—

† Zero or Low water peak fiber with advantages for CWDM applications

Color Code Charts

Jacket Color Chart

Cable Type	Jacket Color
Loose Tube & Outside Plant Cables	Black
Industrial Tray Cables	Orange
Tight Buffered Cables	
Multimode OM1, OM2	Orange
Multimode OM3, OM4	Aqua
Single-mode Enhanced	Yellow

Non-standard jacket colors are available on request.

Fiber Sub-unit Color Code Chart*

Fiber/Tube No.	Color
1	Blue
2	Orange
3	Green
4	Brown
5	Slate
6	White

*Per TIA/EIA 598-B

Fiber/Tube No.	Color
7	Red
8	Black
9	Yellow
10	Violet
11	Rose
12	Aqua

Optical Specifications

Glass Type	Multimode, OM1, 62.5 μm Std./1 Gb	Multimode, OM2, 50 μm Std./1 Gb	Multimode, OM3, 50 μm 10 Gb - 300 m	Multimode, OM4, 50 μm 10 Gb - 550 m	Single-mode Enhanced, OS2 ⁵
Part Number Designations	B9BXXX	B9AXXX	B9CXXX	B9EXXX	B9WXXX
Operating Wavelength (nm)	850/1300	850/1300	850/1300	850/1300	1310/1550
Min. OFL ¹ Bandwidth (MHz-km)	200/500	500/500	1500/500	3500/550*	—
Laser Optimized Bandwidth	220/500	550/500	2000/500	4700/500	—
Max. Attenuation Loose Tube (dB/km)	2.9/0.9	3.5/1.2	2.9/0.9	2.9/0.9	0.35/0.25
Max. Attenuation Tight Buffered ² (dB/km)	3.5/1.2	3.5/1.2	3.0/1.2	3.0/1.2	0.50/0.50
1 Gb Ethernet Min. Link Length (meters S/L ³)	300/550	600/600	900 ⁴ /550	1000/550	5,000/—
10 Gb Ethernet Min. Link Length (meters S/L ³)	32/—	82/—	300/—	550/—	10,000/40,000

¹ OFL = Overfilled Launch

² Max. Attenuation for Tight Buffered, Ribbon, and Loose Tube Plenum Cables

³ S/L = Short wavelength (850 nm) / Long wavelength (1310 nm)

* While Belden supports this distance, hardware performance may limit the fiber's potential. For this reason, the TIA-568-C.0 standard channel length states 400m

⁴ >2000 meters for engineered links

⁵ Low water peak Single-mode suitable for CWDM use complies with ITU G.652.c/d

Other performance levels are available on request. Contact Customer Service for more information.



Distribution Cable

Tight Buffer — Indoor and Indoor/Outdoor Riser, Plenum & LSZH Rated



Optical Fiber Distribution Cable

Applications

- Low to high fiber count requirements
- In-building backbone
- Fiber-to-the-desk applications
- Computer room

Product Description

Flexible thermoplastic jacket provides excellent handling characteristics. Fibers and cable sub-units are color coded for easy identification. Length markings in meters for easy determination of cable length. Full dielectric construction, no grounding required. For Riser offering, MSHA approved cables are available.

Jacket Material

Riser	PVC
Plenum	PVC or PVDF
LSZH	FRPE

Tight Buffer Thermoplastic

Strength Member Aramid Yarn

Color Code (Tight Buffer) Per TIA/EIA 598-B, See page 39

Jacket Color

Single-mode	Yellow
62.5/125 μm	Orange
50/125 μm / 1 Gb	Orange
50/125 μm / 10 Gb	Aqua

Nonstandard jacket colors are available upon request.

Ratings

Riser	
UL Type	OFNR
cUL Type	OFN FT.4
Flame Resistance	UL 1666

Plenum	
UL Type	OFNP
cUL Type	OFN FT.6
Flame Resistance	NFPA 262

Low Smoke Zero Halogen

UL Type	OFNR
cUL Type	OFN FT.4
Flame Resistance	UL 1666

Complies to:

TIA/EIA-568-C.3
ICEA S-83-596

Functional Requirements of:

GR-20-CORE
GR-409-CORE

Specifications

Temperature Range

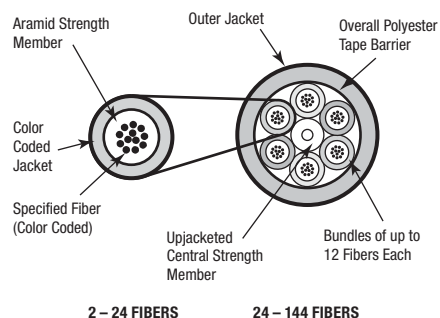
Storage	-40 to +75°C
Operating	-20 to 70°C
(Indoor/Outdoor type)	-40 to 70°C
Installation	0 to 70°C

Min. Bend Radius

Installation	15 x OD
Long Term	10 x OD

Optical Specifications See page 39

Fiber Bundle Detail



One Enterprise.
One Infrastructure.
One Partner.



Distribution Cable

Tight Buffer — Riser, Plenum & LSZH Rated

No. of Fibers	No. of Fibers Per Bundle	Belden Part Number					Outside Diameter		Weight		Max. Install Load	
		OM1 62.5 / 125 µm Std. / 1 Gb	OM2 50 / 125 µm Std. / 1 Gb	OM3 50 / 125 µm 10 Gb – 300 m	OM4 50 / 125 µm 10 Gb – 550 m	OS2 Single-mode Enhanced	Inch	mm	lb/1000 ft	kg/km	lb	N

Distribution Cable Series



Riser (NEC/CEC OFNR/OFN FT.4)												
2	2	B9B037	B9A037	B9C037	B9E037	B9W037	0.190	4.83	13	20	214	952
4	4	B9B038	B9A038	B9C038	B9E038	B9W038	0.190	4.83	17	25	286	1272
6	6	B9B039	B9A039	B9C039	B9E039	B9W039	0.170	4.40	12	17	286	1272
12	12	B9B042	B9A042	B9C042	B9E042	B9W042	0.220	5.59	17	25	239	1063
24	24	B9B601*	B9A601*	B9C601*	B9E601*	B9W601*	0.350	8.90	41	61	300	1350
24	6	B9B602	B9A602	B9C602	B9E602	B9W602	0.550	13.30	121	180	300	1350
36	12	B9B604	B9A604	B9C604	B9E604	B9W604	0.620	15.60	147	220	300	1350
48	12	B9B606	B9A606	B9C606	B9E606	B9W606	0.610	15.40	120	180	300	1350
72	12	B9B609	B9A609	B9C609	B9E609	B9W609	0.760	19.30	184	275	300	1350
96	12	B9B622	B9A622	B9C622	B9E622	B9W622	0.900	22.80	281	420	300	1350
144	12	B9B619	B9A619	B9C619	B9E619	B9W619	1.000	25.40	288	430	300	1350

Riser (NEC/CEC OFNR/OFN FT.4) Indoor Outdoor												
2	2	B9B037T	B9A037T	B9C037T	B9E037T	B9W037T	0.190	4.83	14	21	303	1350
4	4	B9B038T	B9A038T	B9C038T	B9E038T	B9W038T	0.190	4.83	15	23	303	1350
6	6	B9B039T	B9A039T	B9C039T	B9E039T	B9W039T	0.210	5.33	19	28	303	1350
12	12	B9B042T	B9A042T	B9C042T	B9E042T	B9W042T	0.240	6.09	26	38	303	1350
24	24	B9B601T*	B9A601T*	B9C601T*	B9E601T*	B9W601T*	0.330	8.70	46	69	600	2700
24	6	B9B602T	B9A602T	B9C602T	B9E602T	B9W602T	0.670	17.02	169	252	600	2700
36	12	B9B604T	B9A604T	B9C604T	B9E604T	B9W604T	0.670	17.02	178	265	600	2700
48	12	B9B606T	B9A606T	B9C606T	B9E606T	B9W606T	0.670	17.02	187	278	600	2700
72	12	B9B609T	B9A609T	B9C609T	B9E609T	B9W609T	0.810	20.57	233	346	600	2700
96	12	B9B622T	B9A622T	B9C622T	B9E622T	B9W622T	0.895	22.7	305	454	600	2700
144	12	B9B619T	B9A619T	B9C619T	B9E619T	B9W619T	0.964	24.5	365	543	600	2700

Plenum (NEC/CEC OFNP/OFN FT.6)												
2	2	B9B043	B9A043	B9C043	B9E043	B9W043	0.190	4.83	13	19	214	952
4	4	B9B044	B9A044	B9C044	B9E044	B9W044	0.190	4.83	17	25	286	1272
6	6	B9B045	B9A045	B9C045	B9E045	B9W045	0.170	4.40	12	17	286	1272
12	12	B9B048	B9A048	B9C048	B9E048	B9W048	0.220	5.59	17	25	239	1063
24	24	B9B611*	B9A611*	B9C611*	B9E611*	B9W611*	0.330	8.40	46	69	300	1350
24	6	B9B612	B9A612	B9C612	B9E612	B9W612	0.550	13.30	121	180	300	1350
36	12	B9B614	B9A614	B9C614	B9E614	B9W614	0.620	15.60	147	220	300	1350
48	12	B9B616	B9A616	B9C616	B9E616	B9W616	0.610	15.40	134	200	300	1350
72	12	B9B620	B9A620	B9C620	B9E620	B9W620	0.760	19.30	211	315	300	1350
96	12	B9B623	B9A623	B9C623	B9E623	B9W623	0.900	22.80	295	440	300	1350
144	12	B9B621	B9A621	B9C621	B9E621	B9W621	1.000	25.40	382	568	300	1350

Construction for LSZH cables differs from the drawing. Alternative fiber counts are available.
*Single jacket design, in which all fibers are together and not sub-grouped.
For product details on the Indoor/Outdoor fiber cables, contact 1.800.BELDEN.1 or www.belden.com.

Distribution Cable (continued)

Tight Buffer – Riser, Plenum & LSZH Rated

No. of Fibers	No. of Fibers Per Bundle	Belden Part Number					Outside Diameter		Weight		Max. Install Load	
		OM1 62.5 / 125 µm Std. / 1 Gb	OM2 50 / 125 µm Std. / 1 Gb	OM3 50 / 125 µm 10 Gb – 300 m	OM4 50 / 125 µm 10 Gb – 550 m	OS2 Single-mode Enhanced	Inch	mm	lb/1000 ft	kg/km	lb	N

Distribution Cable Series



Plenum (NEC/CEC OFNP/OFN FT.6) Indoor Outdoor												
2	2	B9B043T	B9A043T	B9C043T	B9E043T	B9W043T	0.18	5.0	14	21	243	1082
4	4	B9B044T	B9A044T	B9C044T	B9E044T	B9W044T	0.17	4.0	13	19	243	1082
6	6	B9B045T	B9A045T	B9C045T	B9E045T	B9W045T	0.19	5.0	16	24	243	1082
12	12	B9B048T	B9A048T	B9C048T	B9E048T	B9W048T	0.23	6.0	22	33	388	1726
24	24	B9B611T*	B9A611T*	B9C611T*	B9E611T*	B9W611T*	0.33	8.0	40	60	398	1744
24	6	B9B612T	B9A612T	B9C612T	B9E612T	B9W612T	0.47	12.0	86	128	600	2700
36	12	B9B614T	B9A614T	B9C614T	B9E614T	B9W614T	0.61	15.0	136	202	600	2700
48	12	B9B616T	B9A616T	B9C616T	B9E616T	B9W616T	0.61	15.0	136	202	600	2700
72	12	B9B620T	B9A620T	B9C620T	B9E620T	B9W620T	0.754	19.2	241	359	600	2700
96	12	B9B623T	B9A623T	B9C623T	B9E623T	B9W623T	0.916	23.3	329	490	600	2700
144	12	B9B621T	B9A621T	B9C621T	B9E621T	B9W621T	1.068	27.1	408	607	600	2700

LSZH (NEC/CEC OFNR/OFN FT.4) Indoor Outdoor												
2	2	B9B100	B9A100	B9C100	B9E100	B9W100	0.184	4.70	15	22	180	801
4	4	B9B101	B9A101	B9C101	B9E101	B9W101	0.200	5.10	18	27	195	807
6	6	B9B102	B9A102	B9C102	B9E102	B9W102	0.220	5.60	19	28	270	1201
12	12	B9B104	B9A104	B9C104	B9E104	B9W104	0.255	6.50	26	39	300	1334
24	24	B9B107*	B9A107*	B9C107*	B9E107*	B9W107*	0.325	8.30	44	65	390	1735
36	6	B9B111	B9A111	B9C111	B9E111	B9W111	0.655	16.60	155	231	600	2700
48	12	B9B112	B9A112	B9C112	B9E112	B9W112	0.638	16.20	143	213	600	2700
72	12	B9B114	B9A114	B9C114	B9E114	B9W114	0.775	19.70	207	308	600	2700
96	12	B9B116	B9A116	B9C116	B9E116	B9W116	0.906	23.00	326	485	600	2700
144	12	B9B120	B9A120	B9C120	B9E120	B9W120	0.986	25.00	350	521	600	2700

Construction for LSZH cables differs from the drawing. Alternative fiber counts are available.
 *Single jacket design, in which all fibers are together and not sub-grouped.
 For product details on the Indoor/Outdoor fiber cables, contact 1.800.BELDEN.1 or www.belden.com.



Interlocked Armor Distribution Cable

Tight Buffer — Indoor and Indoor/Outdoor, Riser and Plenum Rated

Applications

- Industrial environments
- Rugged installations
- Manufacturing plants
- Mining operations
- Telecommunications and data trunk
- Inter- and intra-building installations

Product Description

Heavy duty construction with interlocking aluminum armor (steel available on request) provides excellent mechanical protection from cutting or crushing and eliminates need for innerduct. Rodent resistant. Also available for outside plant. Loose tube design available on request.

Jacket Material	
Riser	PVC
Plenum	PVC or PVDF
Buffer Tube	Thermoplastic
Strength Member	Aramid Yarn
Central Strength Member	E-Glass
Armor	Aluminum
Color Code (Buffer)	Per TIA/EIA 598-B, See page 39

Jacket Color	
Single-mode	Yellow
62.5/125 µm	Orange
50/125 µm / 1 Gb	Orange
50/125 µm / 10 Gb	Aqua

Ratings

Riser	OFRC
Plenum	OFCP

Complies to:
TIA/EIA-568-C.3
ICEA S-104-696

Specifications

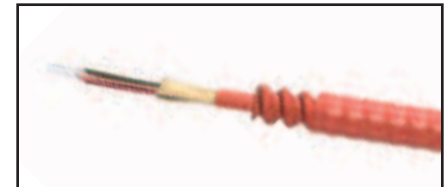
Temperature Range	
Storage	-40 to +80°C
Operating	-20 to +70°C
(Indoor/Outdoor type)	-40 to 70°C)

Crush Resistance (EIA-455-41)	220 N/cm
---	----------

Impact Resistance (EIA-455-25)	2000 Impacts @ 3.0 N-m
--	------------------------

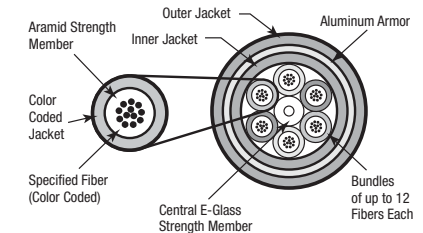
Min. Bend Radius	
Installation	20 x OD
Long Term	15 x OD

Optical Specifications	See page 39
-------------------------------	-------------



Armored Optical Fiber Distribution Cable

Fiber Bundle Detail



No. of Fibers	No. of Fibers Per Bundle	Belden Part Number					Outside Diameter		Weight		Max. Install Load	
		OM1 62.5 / 125 µm Std. / 1 Gb	OM2 50 / 125 µm Std. / 1 Gb	OM3 50 / 125 µm 10 Gb – 300 m	OM4 50 / 125 µm 10 Gb – 550 m	OS2 Single-mode Enhanced	Inch	mm	lb/1000 ft	kg/km	lb	N

Industrial Armored Series – Indoor



Riser (NEC/CEC OFCR/OFC FT.4)												
6	6	B9B230	B9A230	B9C230	B9E230	B9W230	0.570	14.48	127	189	270	1201
12	12	B9B231	B9A231	B9C231	B9E231	B9W231	0.620	15.75	150	223	300	1334
24	24	B9B232*	B9A232*	B9C232*	B9E232*	B9W232*	0.670	17.02	225	335	390	1735
24	6	B9B233	B9A233	B9C233	B9E233	B9W233	0.845	21.46	263	391	600	2700
36	6	B9B234	B9A234	B9C234	B9E234	B9W234	0.995	25.27	368	548	600	2700
48	12	B9B235	B9A235	B9C235	B9E235	B9W235	0.970	24.64	363	540	600	2700
72	12	B9B236	B9A236	B9C236	B9E236	B9W236	1.095	27.81	481	716	600	2700
96	12	B9B237	B9A237	B9C237	B9E237	B9W237	1.245	31.62	625	930	600	2700
144	12	B9B238	B9A238	B9C238	B9E238	B9W238	1.320	33.53	675	1005	600	2700

Plenum (NEC/CEC OFCP/OFC FT.6)												
6	6	B9B240	B9A240	B9C240	B9E240	B9W240	0.481	12.22	90	134	270	1201
12	12	B9B241	B9A241	B9C241	B9E241	B9W241	0.506	12.85	103	153	300	1334
24	24	B9B242*	B9A242*	B9C242*	B9E242*	B9W242*	0.631	16.03	151	225	390	1735
24	6	B9B243	B9A243	B9C243	B9E243	B9W243	0.781	19.84	135	201	600	2700
36	6	B9B244	B9A244	B9C244	B9E244	B9W244	0.881	22.38	309	460	600	2700
48	12	B9B245	B9A245	B9C245	B9E245	B9W245	0.881	22.38	295	439	600	2700
72	12	B9B246	B9A246	B9C246	B9E246	B9W246	1.031	26.19	433	644	600	2700
96	12	B9B247	B9A247	B9C247	B9E247	B9W247	1.181	30.00	599	891	600	2700
144	12	B9B248	B9A248	B9C248	B9E248	B9W248	1.356	34.44	688	1024	600	2700

Additional optical fiber cable constructions are available upon request. *Single jacket designs, in which all fibers are together and not sub-grouped.

Interlocked Armor Distribution Cable (continued)

Tight Buffer — Indoor and Indoor/Outdoor, Riser and Plenum Rated, Direct Burial

No. of Fibers	No. of Fibers Per Bundle	Belden Part Number					Outside Diameter		Weight		Max. Install Load	
		OM1 62.5 / 125 µm Std. / 1 Gb	OM2 50 / 125 µm Std. / 1 Gb	OM3 50 / 125 µm 10 Gb – 300 m	OM4 50 / 125 µm 10 Gb – 550 m	OS2 Single-mode Enhanced	Inch	mm	lb/1000 ft	kg/km	lb	N

Industrial Armored Series – Indoor/Outdoor



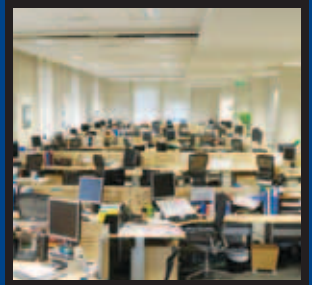
Riser (NEC/CEC OFCR/OFC FT.4) Indoor/Outdoor												
6	6	B9B230T	B9A230T	B9C230T	B9E230T	B9W230T	0.570	14.48	127	189	300	1334
12	12	B9B231T	B9A231T	B9C231T	B9E231T	B9W231T	0.620	15.74	150	223	300	1334
24	24	B9B232T*	B9A232T*	B9C232T*	B9E232T*	B9W232T*	0.670	17.02	225	335	300	1334
24	6	B9B233T	B9A233T	B9C233T	B9E233T	B9W233T	0.870	22.10	398	592	600	2700
36	6	B9B234T	B9A234T	B9C234T	B9E234T	B9W234T	1.020	25.91	451	671	600	2700
48	12	B9B235T	B9A235T	B9C235T	B9E235T	B9W235T	0.995	25.27	422	628	600	2700
72	12	B9B236T	B9A236T	B9C236T	B9E236T	B9W236T	1.120	28.45	527	784	600	2700
96	12	B9B237T	B9A237T	B9C237T	B9E237T	B9W237T	1.270	32.26	644	958	600	2700
144	12	B9B238T	B9A238T	B9C238T	B9E238T	B9W238T	1.320	33.53	743	1106	600	2700

Plenum (NEC/CEC OFCP/OFC FT.6) Indoor/Outdoor												
6	6	B9B240T	B9A240T	B9C240T	B9E240T	B9W240T	0.481	12.20	90	134	300	1334
12	12	B9B241T	B9A241T	B9C241T	B9E241T	B9W241T	0.506	12.85	94	140	300	1334
24	24	B9B242T*	B9A242T*	B9C242T*	B9E242T*	B9W242T*	0.631	16.03	151	225	300	1334
24	6	B9B243T	B9A243T	B9C243T	B9E243T	B9W243T	0.756	19.20	161	240	600	2700
36	6	B9B244T	B9A244T	B9C244T	B9E244T	B9W244T	0.906	23.01	280	417	600	2700
48	12	B9B245T	B9A245T	B9C245T	B9E245T	B9W245T	0.906	23.01	297	442	600	2700
72	12	B9B246T	B9A246T	B9C246T	B9E246T	B9W246T	1.051	26.70	379	564	600	2700
96	12	B9B247T	B9A247T	B9C247T	B9E247T	B9W247T	1.206	30.63	610	908	600	2700
144	12	B9B248T	B9A248T	B9C248T	B9E248T	B9W248T	1.356	34.44	725	1079	600	2700

Additional optical fiber cable constructions are available upon request.

*Single jacket designs, in which all fibers are together and not sub-grouped.

One Enterprise.
One Infrastructure.
One Partner.



Interconnect Cable – Simplex and Duplex

Tight Buffer – Riser & Plenum Rated

Applications

- Patch panels
- Workstation equipment connections
- Horizontal distribution in open office environments

Product Description

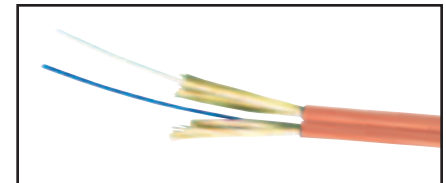
Interconnect Cables are designed for low fiber-count premises environments. They are small and very flexible, making them ideal for confined spaces. Their aesthetic appearance makes these cables suitable for use in open office environments. Available in 1 or 2 fibers. One sub-unit is marked to permit easy identification of transmit and receive fibers. Length markings to facilitate installation.

Jacket Material	PVC
Tight Buffer	Thermoplastic
Strength Member	Aramid Yarn
Color Code (Tight Buffer)	Per TIA/EIA 598-B, See page 39
Jacket Color	
Single-mode	Yellow
62.5/125 μm	Orange
50/125 μm / 1 Gb	Orange
50/125 μm / 10 Gb	Aqua

Nonstandard jacket colors are available upon request.

Ratings

Riser	OFNR
Plenum	OFNP
Complies to:	
TIA/EIA-568-C.3	
ICEA S-83-596	

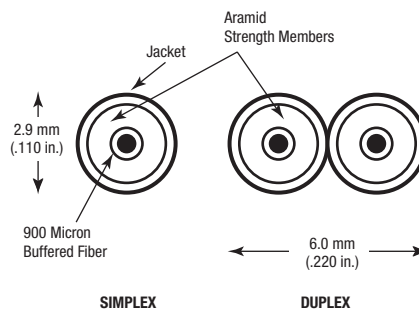


Duplex Optical Fiber Interconnect Cable

Specifications

Temperature Range	
Storage	-40 to +75°C
Operating/Installation	0 to +70°C
Min. Bend Radius	
Installation	18 x OD
Long Term	11 x OD
Optical Specifications	See page 39

Fiber Bundle Detail



No. of Fibers	Belden Part Number					Outside Diameter		Weight		Max. Install Load	
	OM1 62.5 / 125 μm Std. / 1 Gb	OM2 50 / 125 μm Std. / 1 Gb	OM3 50 / 125 μm 10 Gb – 300 m	OM4 50 / 125 μm 10 Gb – 550 m	OS2 Single-mode Enhanced	Inch	mm	lb/1000 ft	kg/km	lb	N

Interconnect Cable Series

Riser (NEC/CEC OFNR/OFN FT.4)

1	B97112	B9A001	B9C001	B9E001	B9W001	0.110	2.9	6	9	119	530
2	B96915	B9A002	B9C002	B9E002	B9W002	0.11 x 0.22	2.9 x 6.0	10	15	239	1063

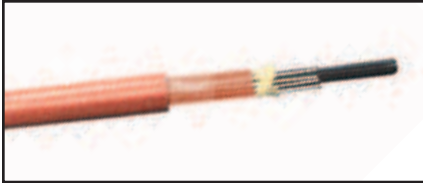
Plenum (NEC/CEC OFNP/OFN FT.6)

1	B98086	B9A003	B9C003	B9E003	B9W003	0.110	2.9	6	9	119	530
2	B96919	B9A004	B9C004	B9E004	B9W004	0.11 x 0.22	2.9 x 6.0	12	18	239	1063

LSZH versions (OFNR-LS) and 2.0mm diameter size are available as special order.

Breakout Style Cable

Tight Buffer — Indoor Riser, Plenum & LSZH Rated



Optical Fiber Breakout Cable

Applications

- Low to medium fiber count requirements
- In-building backbone or horizontal deployment
- Office wiring
- Factory floor automation and harsh environment installations

Product Description

Full dielectric construction, no grounding required. Available with 2 to 36 fibers. Fiber subunits are color coded for easy identification. Length markings in meters for easy determination of cable length. For Riser offering, MSHA approved cables are available.

Outer Jacket Material

Riser	PVC
Plenum	PVC or PVDF
LSZH	FRPE

Sub-unit Jacket Material Thermoplastic

Tight Buffer Thermoplastic

Strength Member Aramid Yarn

Color Code (Tight Buffer) Per TIA/EIA 598-B, See page 39

Jacket Color

Single-mode	Yellow
62.5/125 µm	Orange
50/125 µm / 1 Gb	Orange
50/125 µm / 10 Gb	Aqua

Ratings

Riser OFNR

Plenum OFNP

Low Smoke Zero Halogen OFNR

Complies to:

TIA/EIA-568-C.3
ICEA S-83-596

Specifications

Temperature Range

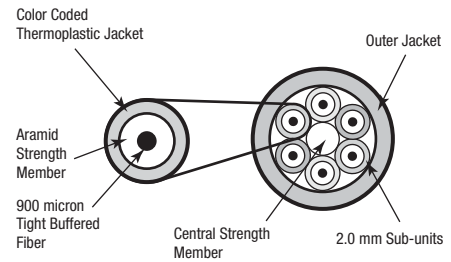
Storage	-40 to +80°C
Operating/Installation	-20 to +70°C

Min. Bend Radius

Installation	15 x OD
Long Term	10 x OD

Optical Specifications See page 39

Fiber Bundle Detail



No. of Fibers	No. of Fibers Per Bundle	Belden Part Number					Outside Diameter		Weight		Max. Install Load	
		OM1 62.5 / 125 µm Std. / 1 Gb	OM2 50 / 125 µm Std. / 1 Gb	OM3 50 / 125 µm 10 Gb – 300 m	OM4 50 / 125 µm 10 Gb – 550 m	OS2 Single-mode Enhanced	Inch	mm	lb/1000 ft	kg/km	lb	N

Breakout Cable Series



Riser (NEC/CEC OFNR/OFN FT.4)

No. of Fibers	No. of Fibers Per Bundle	OM1	OM2	OM3	OM4	OS2	Inch	mm	lb/1000 ft	kg/km	lb	N
2	1	B9B005	B9A005	B9C005	B9E005	B9W005	0.260	6.60	24	36	240	1068
4	1	B9B006	B9A006	B9C006	B9E006	B9W006	0.321	8.15	35	52	345	1535
6	1	B9B007	B9A007	B9C007	B9E007	B9W007	0.358	9.09	54	80	543	2415
10	1	B9B009	B9A009	B9C009	B9E009	B9W009	0.455	11.56	86	128	600	2700
12	1	B9B010	B9A010	B9C010	B9E010	B9W010	0.514	13.06	110	164	600	2700
18	1	B9B011	B9A011	B9C011	B9E011	B9W011	0.520	13.21	104	155	600	2700
24	1	B9B012	B9A012	B9C012	B9E012	B9W012	0.590	14.99	135	201	600	2700

Plenum (NEC/CEC OFNP/OFN FT.6)

No. of Fibers	No. of Fibers Per Bundle	OM1	OM2	OM3	OM4	OS2	Inch	mm	lb/1000 ft	kg/km	lb	N
2	1	B9B013	B9A013	B9C013	B9E013	B9W013	0.230	5.84	20	20	180	801
4	1	B9B014	B9A014	B9C014	B9E014	B9W014	0.263	6.68	30	45	345	1535
6	1	B9B015	B9A015	B9C015	B9E015	B9W015	0.309	7.85	41	61	465	2068
10	1	B9B017	B9A017	B9C017	B9E017	B9W017	0.385	9.78	73	109	600	2700
12	1	B9B018	B9A018	B9C018	B9E018	B9W018	0.391	9.93	60	89	600	2700
18	1	B9B019	B9A019	B9C019	B9E019	B9W019	0.456	11.58	89	132	600	2700

One Enterprise.
One Infrastructure.
One Partner.



Breakout Style Cable (continued)
Tight Buffer — Indoor Riser, Plenum & LSZH Rated



No. of Fibers	No. of Fibers Per Bundle	Belden Part Number					Outside Diameter		Weight		Max. Install Load	
		OM1 62.5 / 125 µm Std. / 1 Gb	OM2 50 / 125 µm Std. / 1 Gb	OM3 50 / 125 µm 10 Gb – 300 m	OM4 50 / 125 µm 10 Gb – 550 m	OS2 Single-mode Enhanced	Inch	mm	lb/1000 ft	kg/km	lb	N

Breakout Cable Series (continued)

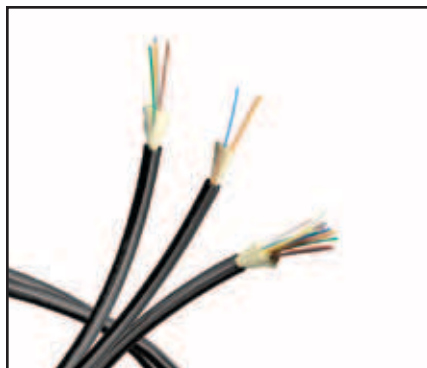


LSZH (NEC/CEC OFNR/OFN FT.4)												
2	1	B9B130	B9A130	B9C130	B9E130	B9W130	0.260	6.60	24	36	240	1068
4	1	B9B131	B9A131	B9C131	B9E131	B9W131	0.321	8.15	36	54	345	1535
6	1	B9B132	B9A132	B9C132	B9E132	B9W132	0.358	9.09	58	86	543	2415
10	1	B9B134	B9A134	B9C134	B9E134	B9W134	0.455	11.56	95	141	600	2700
12	1	B9B135	B9A135	B9C135	B9E135	B9W135	0.514	13.06	120	179	600	2700
18	1	B9B136	B9A136	B9C136	B9E136	B9W136	0.520	13.21	115	171	600	2700

2.5 mm & 2.9 mm Breakout Cables are also available.

Brilliance® Maxi-Bend™ Tactical Fiber Optic Cables

Single-mode and Multimode Fiber



Applications

- ENG vehicles
- Outdoor news, sporting or other events
- Digital camera transmission
- Military communications
- Re-deployable communications
- Mining and industrial applications

Product Description

Small and lightweight with a rugged jacket, Tactical Cable provides a durable design for repeated deployment and retrieval cycles and a superior level of crush resistance. Designed to military standards.

Jacket Material	UV-resistant PU
Buffer	Polyester
Strength Member	Aramid Yarn
Color Code	

Jacket	Black
Fiber/Buffer	Per EIA/TIA 598-C
Fiber/Buffer 1	Blue
Fiber/Buffer 2	Orange
Fiber/Buffer 3	Green
Fiber/Buffer 4	Brown
Fiber/Buffer 5	Slate
Fiber/Buffer 6	White
Fiber/Buffer 7	Red
Fiber/Buffer 8	Black
Fiber/Buffer 9	Yellow
Fiber/Buffer 10	Violet
Fiber/Buffer 11	Rose
Fiber/Buffer 12	Aqua

Specifications

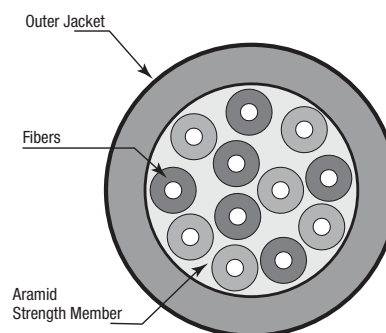
Temperature Range	
Storage	-70 to +85°C
Operating	-55 to +85°C
Crush Resistance (EIA-455-41)	440 N/cm
Impact Resistance (EIA-455-25)	200 Impacts @ 2.2 N-m
Cyclic Flexing (EIA-455-104)	2000 cycles, min.
Min. Bend Radius	
Installation	15 x OD
Long Term	8 x OD

Optical Specifications

Single-mode Enhanced*	
Operating Wavelength (nm)	1310/1550
Max. Attenuation Tight Buffered (dB/km)	0.80/0.50
Multimode 62.5/125 µm Std./1Gbe	
Operating Wavelength (nm)	850/1300
Max. Attenuation Tight Buffered (dB/km)	3.50/1.25

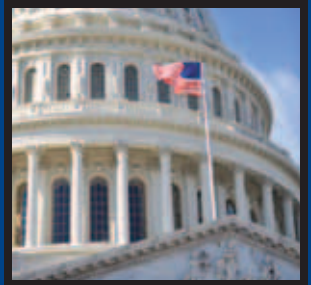
* Low water peak Single-mode suitable for CWDM use complies with ITU G.652.c/d

Fiber Bundle Detail



No. of Fibers	Belden Part Number		Outside Diameter		Weight		Max. Install Load	
	OM1 62.5 / 125 µm	OS2 Single-mode	Inch	mm	lb/1000 ft	kg/km	lb	N
2	B96571	B96566	0.240	6.0	22	33	330	1468
4	B96551	B96639	0.240	6.0	22	33	330	1468
6	B96572	B96567	0.240	6.1	23	33	330	1468
12	B96575	B96570	0.280	7.0	25	37	330	1468

Please contact the Technical Support Group for proper connectivity integration and installation guidance. All optical fiber products can be supplied in compliance with RoHS regulations. Please contact Inside Sales for more details. Other glass types, strand counts and jacket formulations (and colors) are available by special order. Contact your authorized Belden distributor (www.belden.com) or call Belden Customer Service at 1.800.235.3361 (1.800.BELDEN.1)



Single Jacket, All Dielectric Cable

Loose Tube — Outdoor, and Indoor/Outdoor Riser & LSZH Rated

Applications

- Medium to high fiber count requirements
- Inter-building duct installations
- Lashed aerial
- Indoor/outdoor
- Industrial outside plant (OSP Type)

Product Description

Gel-filled buffer tube prevents water migration. All-dielectric strength member. Available as Riser rated cable, thereby eliminating the need for service entrance splicing to in-building cable. Full dielectric construction, no grounding required. Available with up to 216 fibers. Length markings in meters for easy determination of cable length.

Jacket Material	
Outdoor	PE
Riser	PVC
Buffer Tube	PBT
Strength Member	Aramid Yarn
Central Strength Member	E-Glass
Color Code (Buffer)	Per TIA/EIA 598-B, See page 39
Jacket Color	Black

Ratings

Riser	
UL Type	OFNR
cUL Type	OFN FT.4
Flame Resistance	UL 1666

Complies to:
TIA/EIA-568-C.3
ICEA S-87-640

Functional Requirements of:
GR-20-CORE
GR-409-CORE

Specifications

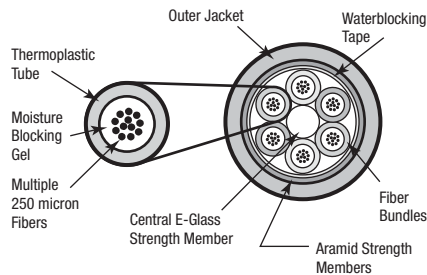
Temperature Range (Outdoor Series)	
Storage	-40 to +75°C
Operating	-40 to +70°C

Temperature Range (Riser Series)	
Storage	-40 to +75°C
Operating	-40 to +70°C

Min. Bend Radius	
Installation	20 x OD
Long Term	15 x OD

Optical Specifications See page 39

Fiber Bundle Detail



Single Jacket, All Dielectric Optical Fiber Cable

Single Jacket, All Dielectric Cable (continued) Loose Tube – Outdoor, and Indoor/Outdoor Riser Rated

No. of Fibers	No. of Fibers Per Bundle	Belden Part Number					Outside Diameter		Weight		Max. Install Load	
		OM1 62.5 / 125 µm Std. / 1 Gb	OM2 50 / 125 µm Std. / 1 Gb	OM3 50 / 125 µm 10 Gb – 300 m	OM4 50 / 125 µm 10 Gb – 550 m	OS2 Single-mode Enhanced	Inch	mm	lb/1000 ft	kg/km	lb	N

Loose Tube Series



Outdoor												
6	6	B9B510T	B9A510T	B9C510T	B9E510T	B9W510T	0.41	10.5	56	84	600	2700
12	12	B9B511T	B9A511T	B9C511T	B9E511T	B9W511T	0.41	10.5	56	84	600	2700
24	12	B9B500T	B9A500T	B9C500T	B9E500T	B9W500T	0.41	10.5	57	85	600	2700
36	12	B9B502T	B9A502T	B9C502T	B9E502T	B9W502T	0.41	10.5	58	86	600	2700
48	12	B9B505T	B9A505T	B9C505T	B9E505T	B9W505T	0.41	10.5	59	87	600	2700
72	12	B9B507T	B9A507T	B9C507T	B9E507T	B9W507T	0.45	11.5	71	106	600	2700
96	12	B9B513T	B9A513T	B9C513T	B9E513T	B9W513T	0.52	13.2	91	136	600	2700
144	12	B9B509T	B9A509T	B9C509T	B9E509T	B9W509T	0.67	17.0	148	220	600	2700
216	12	B9B520T	B9A520T	B9C520T	B9E520T	B9W520T	0.69	17.4	150	224	600	2700

Riser (NEC/CEC OFNR/OFN FT.4) Indoor/Outdoor												
6	6	B9B810	B9A810	B9C810	B9E810	B9W810	0.51	12.9	107	157	600	2700
12	12	B9B811	B9A811	B9C811	B9E811	B9W811	0.51	12.9	108	160	600	2700
24	12	B9B812	B9A812	B9C812	B9E812	B9W812	0.51	12.9	108	161	600	2700
36	12	B9B813	B9A813	B9C813	B9E813	B9W813	0.51	12.9	109	162	600	2700
48	12	B9B814	B9A814	B9C814	B9E814	B9W814	0.51	12.9	110	164	600	2700
72	12	B9B815	B9A815	B9C815	B9E815	B9W815	0.54	13.7	128	190	600	2700
96	12	B9B816	B9A816	B9C816	B9E816	B9W816	0.61	15.5	159	237	600	2700
144	12	B9B817	B9A817	B9C817	B9E817	B9W817	0.76	19.3	243	361	600	2700

Alternative fiber counts are available.



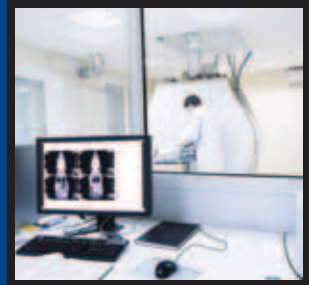
No. of Fibers	No. of Fibers Per Bundle	Belden Part Number					Outside Diameter		Weight		Max. Install Load	
		OM1 62.5 / 125 µm Std. / 1 Gb	OM2 50 / 125 µm Std. / 1 Gb	OM3 50 / 125 µm 10 Gb – 300 m	OM4 50 / 125 µm 10 Gb – 550 m	OS2 Single-mode Enhanced	Inch	mm	lb/1000 ft	kg/km	lb	N

Loose Tube Indoor/Outdoor Fiber Optic Cable



LSZH (NEC/CEC OFNR/OFN FT.4) Indoor/Outdoor												
6	6	B9B830	B9A830	B9C830	B9E830	B9W830	0.38	9.65	71	105	600	2700
12	12	B9B831	B9A831	B9C831	B9E831	B9W831	0.38	9.65	71	105	600	2700
24	12	B9B832	B9A832	B9C832	B9E832	B9W832	0.38	9.65	71	105	600	2700
36	12	B9B833	B9A833	B9C833	B9E833	B9W833	0.38	9.65	62	92	600	2700
48	12	B9B834	B9A834	B9C834	B9E834	B9W834	0.48	12.18	101	151	600	2700

One Enterprise.
One Infrastructure.
One Partner.



Single Jacket, All Dielectric Cable

Loose Tube — (Gel-free) Indoor/Outdoor Plenum Rated

Applications

- Medium to high fiber count requirements
- Inter-building duct installations
- Lashed aerial
- Indoor/outdoor
- Campus backbones
- Data Centers
- High Density Cable Trays

Product Description

Dry waterblocking technology used within tubes and under jacket. Available as Plenum rated cable, thereby eliminating the need for service entrance splicing to in-building cable. Small diameter and bend radius facilitate installation in tight spaces. Full dielectric construction, no grounding required. Available with up to 144 fibers. Fibers grouped into sets of 12 for maximum density. Length markings in meters for easy determination of cable length.

Jacket Material	
Non-unitized	Thermoplastic
Unitized	PVDF-Copolymer
Buffer Tube	Thermoplastic
Strength Member	E-Glass and Aramid Yarn
Central Strength Member	Upjacketed
Color Code (Fiber)	Per TIA/EIA 598-B, See page 39
Jacket Color	Black

Functional Requirements of:
GR-20-CORE
GR-409-CORE

Ratings

Plenum	
UL Type	OFNP
cUL Type	OFN FT.6
Flame Resistance	NFPA 262

Complies to:	
TIA/EIA-568-C.3	
ICEA S-104-696	



Single Jacket, All Dielectric Optical Fiber Cable

Specifications

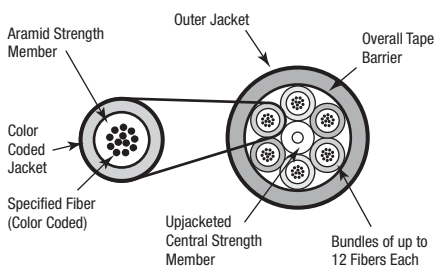
Temperature Range	
Storage	-40 to +80°C
Operating	-40 to +70°C
Installation	0 to +60°C

Cyclic Flexing (EIA-455-104) 2000 cycles, min.

Min. Bend Radius	
Installation	20 x OD
Long Term	15 x OD

Optical Specifications See page 39

Fiber Bundle Detail



No. of Fibers	No. of Fibers Per Bundle	Belden Part Number					Outside Diameter		Weight		Max. Install Load	
		OM1 62.5 / 125 µm Std. / 1 Gb	OM2 50 / 125 µm Std. / 1 Gb	OM3 50 / 125 µm 10 Gb – 300 m	OM4 50 / 125 µm 10 Gb – 550 m	OS2 Single-mode Enhanced	Inch	mm	lb/1000 ft	kg/km	lb	N

Loose Tube Series

Plenum (NEC/CEC OFNP/OFN FT.6) Indoor/Outdoor												
No. of Fibers	No. of Fibers Per Bundle	OM1 62.5 / 125 µm Std. / 1 Gb	OM2 50 / 125 µm Std. / 1 Gb	OM3 50 / 125 µm 10 Gb – 300 m	OM4 50 / 125 µm 10 Gb – 550 m	OS2 Single-mode Enhanced	Inch	mm	lb/1000 ft	kg/km	lb	N
6	6	B9B202	B9A202	B9C202	B9E202	B9W202	0.265	6.70	33	49	320	1423
12	12	B9B204	B9A204	B9C204	B9E204	B9W204	0.265	6.70	33	49	320	1423
24	12	B9B205	B9A205	B9C205	B9E205	B9W205	0.359	9.12	47	70	405	1801
36	12	B9B206	B9A206	B9C206	B9E206	B9W206	0.359	9.12	47	70	405	1801
48	12	B9B207	B9A207	B9C207	B9E207	B9W207	0.359	9.12	48	71	405	1801
72	12	B9B209	B9A209	B9C209	B9E209	B9W209	0.429	10.90	72	107	600	2700
96	12	B9B211	B9A211	B9C211	B9E211	B9W211	0.501	12.73	102	152	600	2700
144	12	B9B215	B9A215	B9C215	B9E215	B9W215	0.665	16.89	191	284	600	2700

Alternative fiber counts and hybrid constructions are available.

Double Jacket, Armored Cable

Loose Tube – Outdoor, and Indoor/Outdoor Riser Rated



Double Jacket Armored Cable

Applications

- Direct burial
- Low to high fiber count requirements
- Inter-building duct installations
- Indoor/outdoor
- Industrial outside plant (OSP Type)

Product Description

Gel-filled buffer tube prevents water migration. Available as Riser rated cable, thereby eliminating the need for service entrance splicing to in-building cable. Rodent resistant. Available in sizes up to 216 fibers. Length markings in meters for easy determination of cable length.

Jacket Material	
Outdoor	PE
Riser	PVC
Buffer Tube	Thermoplastic
Strength Member	Aramid Yarn
Central Strength Member	E-Glass
Armor	Corrugated Steel Tape
Color Code (Buffer)	Per TIA/EIA 598-B, See page 39
Jacket Color	Black

Ratings

Riser OFCR

Complies to:
TIA/EIA-568-C.3
ICEA S-87-640

Functional Requirements of:
GR-20-CORE
GR-409-CORE

Specifications

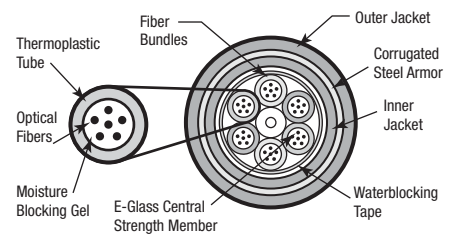
Temperature Range (Outdoor)
Storage -40 to +75°C
Operating -40 to +70°C

Temperature Range (Riser)
Storage -40 to +80°C
Operating -40 to +70°C

Min. Bend Radius
Installation 20 x OD
Long Term 15 x OD

Optical Specifications See page 39

Fiber Bundle Detail



One Enterprise.
One Infrastructure.
One Partner.



Double Jacket, Armored Cable (OSP Type) (continued)
Loose Tube – Outdoor, and Indoor/Outdoor Riser Rated

No. of Fibers	No. of Fibers Per Bundle	Belden Part Number					Outside Diameter		Weight		Max. Install Load	
		OM1 62.5 / 125 µm Std. / 1 Gb	OM2 50 / 125 µm Std. / 1 Gb	OM3 50 / 125 µm 10 Gb – 300 m	OM4 50 / 125 µm 10 Gb – 550 m	OS2 Single-mode Enhanced	Inch	mm	lb/1000 ft	kg/km	lb	N

Loose Tube Series – Armored



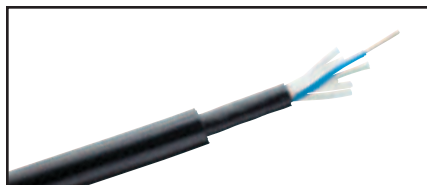
Outdoor												
6	6	B9B381T	B9A381T	B9C381T	B9E381T	B9W381T	0.62	15.5	134	200	600	2670
12	12	B9B382T	B9A382T	B9C382T	B9E382T	B9W382T	0.62	15.5	134	200	600	2670
24	12	B9B384T	B9A384T	B9C384T	B9E384T	B9W384T	0.62	15.5	134	200	600	2670
36	12	B9B386T	B9A386T	B9C386T	B9E386T	B9W386T	0.62	15.5	134	200	600	2670
48	12	B9B389T	B9A389T	B9C389T	B9E389T	B9W389T	0.62	15.5	134	200	600	2670
72	12	B9B391T	B9A391T	B9C391T	B9E391T	B9W391T	0.65	16.4	138	206	600	2670
96	12	B9B398T	B9A398T	B9C398T	B9E398T	B9W398T	0.72	18.2	170	254	600	2670
144	12	B9B393T	B9A393T	B9C393T	B9E393T	B9W393T	0.90	22.9	259	385	600	2670

Riser (NEC/CEC OFCR/OFC FT.4) Indoor/Outdoor												
6	6	B9B890	B9A890	B9C890	B9E890	B9W890	0.54	13.7	138	205	600	2700
12	12	B9B891	B9A891	B9C891	B9E891	B9W891	0.54	13.7	138	205	600	2700
24	12	B9B892	B9A892	B9C892	B9E892	B9W892	0.54	13.7	138	205	600	2700
36	12	B9B893	B9A893	B9C893	B9E893	B9W893	0.54	13.7	138	205	600	2700
48	12	B9B894	B9A894	B9C894	B9E894	B9W894	0.66	16.8	176	262	600	2700
72	12	B9B895	B9A895	B9C895	B9E895	B9W895	0.66	16.8	172	256	600	2700
96	12	B9B896	B9A896	B9C896	B9E896	B9W896	0.70	17.8	206	307	600	2700
144	12	B9B897	B9A897	B9C897	B9E897	B9W897	0.88	22.4	302	449	600	2700

Additional armor/jacket configurations are available including Single and Triple jacket with armor.
Armor types include steel/aluminum corrugated, steel/aluminum interlock, and glass yarn rodent resistant.

Double Jacket, Heavy-Duty Cable

Loose Tube — Outdoor



Double Jacket Heavy-Duty Cable

Applications

- Direct burial
- Harsh environments
- Applications requiring good ozone-, moisture- and weather-resistance

Product Description

Gel-filled buffer tube prevents water migration. Available with up to 216 fibers.

Jacket Material	
Outer Jacket:	PE
Inner Jacket:	PE
Buffer Tube	PBT
Strength Member	Aramid Yarn
Central Strength Member	E-Glass
Core Wrap	Water Swellable Tape
Color Code (Buffer)	Per TIA/EIA 598-B, See page 39
Jacket Color	Black

Ratings

Complies to:
TIA/EIA-568-C.3
ICEA S-87-640

Functional Requirements of:
GR-20-CORE

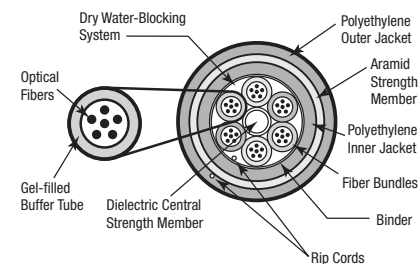
Specifications

Temperature Range	
Storage	-40 to +75°C
Operating	-40 to +70°C

Min. Bend Radius	
Installation	20 x OD
Long Term	15 x OD

Optical Specifications See page 39

Fiber Bundle Detail



No. of Fibers	No. of Fibers Per Bundle	Belden Part Number					Outside Diameter		Weight		Max. Install Load	
		OM1 62.5 / 125 µm Std. / 1 Gb	OM2 50 / 125 µm Std. / 1 Gb	OM3 50 / 125 µm 10 Gb – 300 m	OM4 50 / 125 µm 10 Gb – 550 m	OS2 Single-mode Enhanced	Inch	mm	lb/1000 ft	kg/km	lb	N

Loose Tube Series — Heavy Duty



Outdoor												
2	2	B9B840	B9A840	B9C840	B9E840	B9W840	0.49	12.5	84	125	600	2700
4	4	B9B841	B9A841	B9C841	B9E841	B9W841	0.49	12.5	84	125	600	2700
6	6	B9B842	B9A842	B9C842	B9E842	B9W842	0.49	12.5	84	125	600	2700
12	12	B9B844	B9A844	B9C844	B9E844	B9W844	0.49	12.5	84	125	600	2700
18	12	B9B845	B9A845	B9C845	B9E845	B9W845	0.49	12.5	84	125	600	2700
24	12	B9B846	B9A846	B9C846	B9E846	B9W846	0.49	12.5	84	125	600	2700
36	12	B9B847	B9A847	B9C847	B9E847	B9W847	0.49	12.5	84	125	600	2700
48	12	B9B848	B9A848	B9C848	B9E848	B9W848	0.49	12.5	84	125	600	2700
72	12	B9B849	B9A849	B9C849	B9E849	B9W849	0.53	13.4	97	144	600	2700
96	12	B9B820	B9A820	B9C820	B9E820	B9W820	0.60	15.2	121	180	600	2700
144	12	B9B821	B9A821	B9C821	B9E821	B9W821	0.75	19.0	184	274	600	2700
216	12	B9B822	B9A822	B9C822	B9E822	B9W822	0.76	19.3	187	273	600	2700



Central Tube Cable

Loose Tube — Outdoor, and Outdoor Armored

Applications

- Campus OSP backbones
- Drop cable
- Telecommunications and data trunk
- Direct burial (armored only)
- Lashed aerial

Product Description

Economical option for low fiber counts. Quick and easy end preparation. Fully waterblocked with gel-filled buffer tube. No rods – easy handling. Crush, impact and abrasion resistant.

Jacket Material	PE
Buffer Tube	PBT
Core Wrap	Water Swellable Tape
Strength Member	Fiberglass
Armor	Corrugated Steel
Color Codes (Jacket and Fibers)	Per TIA/EIA 598-B, See page 39
Jacket Color	Black

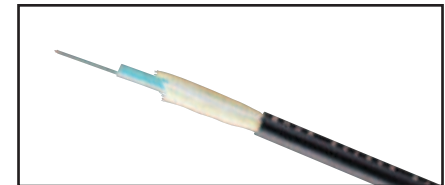
Functional Requirements of:
GR-20-CORE

Specifications

Temperature Range	
Storage	-40 to +75°C
Operating	-40 to +70°C

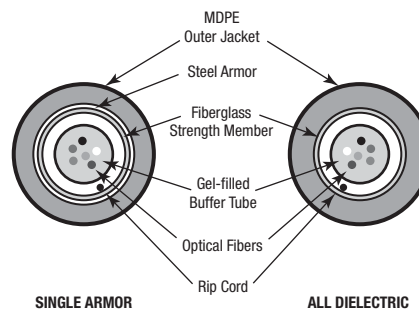
Min. Bend Radius	
Installation	20 x OD
Long Term	15 x OD

Optical Specifications See page 39



Outdoor Loose Tube Cable

Fiber Bundle Detail



No. of Fibers	Belden Part Number					Outside Diameter		Weight		Max. Install Load	
	OM1 62.5 / 125 µm Std. / 1 Gb	OM2 50 / 125 µm Std. / 1 Gb	OM3 50 / 125 µm 10 Gb – 300 m	OM4 50 / 125 µm 10 Gb – 550 m	OS2 Single-mode Enhanced	Inch	mm	lb/1000 ft	kg/km	lb	N

Central Tube Series



Outdoor											
2	B9B150	B9A150	B9C150	B9E150	B9W150	0.31	7.8	34	50	600	2700
4	B9B151	B9A151	B9C151	B9E151	B9W151	0.31	7.8	34	50	600	2700
6	B9B152	B9A152	B9C152	B9E152	B9W152	0.31	7.8	34	50	600	2700
8	B9B153	B9A153	B9C153	B9E153	B9W153	0.31	7.8	34	50	600	2700
10	B9B154	B9A154	B9C154	B9E154	B9W154	0.31	7.8	34	50	600	2700
12	B9B155	B9A155	B9C155	B9E155	B9W155	0.31	7.8	34	50	600	2700
24	B9B159	B9A159	B9C159	B9E159	B9W159	0.31	7.8	34	50	600	2700

Outdoor Armored											
2	B9B170	B9A170	B9C170	B9E170	B9W170	0.48	12.2	95	140	600	2700
4	B9B171	B9A171	B9C171	B9E171	B9W171	0.48	12.2	95	140	600	2700
6	B9B172	B9A172	B9C172	B9E172	B9W172	0.48	12.2	95	140	600	2700
8	B9B173	B9A173	B9C173	B9E173	B9W173	0.48	12.2	95	140	600	2700
10	B9B174	B9A174	B9C174	B9E174	B9W174	0.48	12.2	95	140	600	2700
12	B9B175	B9A175	B9C175	B9E175	B9W175	0.48	12.2	95	140	600	2700
24	B9B179	B9A179	B9C179	B9E179	B9W179	0.48	12.2	95	140	600	2700

TrayOptic® Industrial, Heavy-Duty, All Dielectric Cable

Loose Tube — Indoor/Outdoor Riser Rated



Tray Optic Cable

Applications

- Industrial and other harsh environment applications
- Factory automation
- Direct burial

Product Description

Laser Optimized Fiber to handle Gigabit Ethernet light sources and expanded bandwidth requirements. Passes IEEE 1202/583-2003 flame test. Waterblocking agent for moisture protection. CPE outer jacket option provides extra chemical or abrasion resistance.

Jacket Material	PVC or CPE
Strength Member	Aramid Yarn
Jacket Color	
Single-mode	Yellow
62.5/125 µm	Orange
50/125 µm / 1 Gb	Orange
50/125 µm / 10 Gb	Aqua

Ratings

Riser	
UL Type	OFNR
cUL Type	OFN FT.4
Flame Resistance	IEEE 1202 / 383-2003

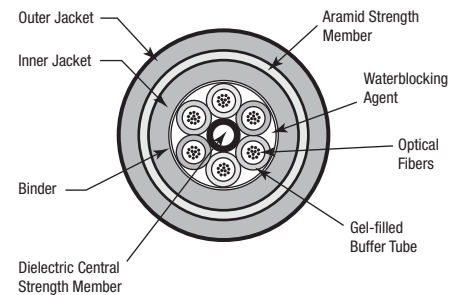
Complies to:
TIA/EIA-568-C.3
ICEA S-104-696

Functional Requirements of:
GR-20-CORE
GR-409-CORE

Specifications

Temperature Range	
Storage	-40 to +70°C
Operating	-40 to +70°C
Crush Resistance	2000 N/cm (EIA-455-41)
Impact Resistance	2000 impacts @ 1.6N-m (EIA-455-25)
Cyclic Flexing	25 cycles, 12 lbs., (EIA-455-104) 20 x OD radius min.
Min. Bend Radius	
Installation	20 x OD
Long Term	15 x OD
Maximum Installation Load	600 lbs. (2700 N)
Optical Specifications	See page 39

Fiber Bundle Detail



One Enterprise.
One Infrastructure.
One Partner.



TrayOptic® Industrial, Heavy-Duty, All Dielectric Cable (continued)
Loose Tube – Indoor/Outdoor Riser Rated

No. of Fibers	No. of Fibers Per Bundle	Belden Part Number					Outside Diameter		Weight		Max. Install Load	
		OM1 62.5 / 125 µm Std. / 1 Gb	OM2 50 / 125 µm Std. / 1 Gb	OM3 50 / 125 µm 10 Gb – 300 m	OM4 50 / 125 µm 10 Gb – 550 m	OS2 Single-mode Enhanced	Inch	mm	lb/1000 ft	kg/km	lb	N

TrayOptic Series



Riser (NEC/CEC OFNR/OFN FT.4) PVC Jacket Indoor/Outdoor												
2	2	I100255	I1A0255	I1C0255	I1E0255	I1W0255	0.43	11.00	92	136	600	2700
4	4	I100455	I1A0455	I1C0455	I1E0455	I1W0455	0.43	11.00	92	136	600	2700
6	6	I100655	I1A0655	I1C0655	I1E0655	I1W0655	0.43	11.00	92	136	600	2700
8	4	I400855	I4A0855	I4C0855	I4E0855	I4W0855	0.43	11.00	92	136	600	2700
12	6	I601255	I6A1255	I6C1255	I6E1255	I6W1255	0.43	11.00	92	136	600	2700
18	6	I601855	I6A1855	I6C1855	I6E1855	I6W1855	0.43	11.00	92	136	600	2700
24	6	I602455	I6A2455	I6C2455	I6E2455	I6W2455	0.43	11.00	92	136	600	2700
36	6	I603655	I6A3655	I6C3655	I6E3655	I6W3655	0.43	11.00	92	136	600	2700
48	12	I604855	I6A4855	I6C4855	I6E4855	I6W4855	0.54	13.72	128	186	600	2700
60	12	I606055	I6A6055	I6C6055	I6E6055	I6W6055	0.54	13.72	128	186	600	2700
72	12	I607255	I6A7255	I6C7255	I6E7255	I6W7255	0.54	13.72	128	186	600	2700

Riser (NEC/CEC OFNR/OFN FT.4) CPE Jacket Indoor/Outdoor												
2	2	I100266	I1A0266	I1C0266	I1E0266	I1W0266	0.43	10.90	89	124	600	2700
4	4	I100466	I1A0466	I1C0466	I1E0466	I1W0466	0.43	10.90	89	124	600	2700
6	6	I100666	I1A0666	I1C0666	I1E0666	I1W0666	0.43	10.90	89	124	600	2700
8	4	I400866	I4A0866	I4C0866	I4E0866	I4W0866	0.43	10.90	89	124	600	2700
12	6	I601266	I6A1266	I6C1266	I6E1266	I6W1266	0.43	10.90	89	124	600	2700
18	6	I601866	I6A1866	I6C1866	I6E1866	I6W1866	0.43	10.90	89	124	600	2700
24	6	I602466	I6A2466	I6C2466	I6E2466	I6W2466	0.43	10.90	89	124	600	2700
36	6	I603666	I6A3666	I6C3666	I6E3666	I6W3666	0.43	10.90	89	124	600	2700
48	12	I604866	I6A4866	I6C4866	I6E4866	I6W4866	0.54	13.72	125	192	600	2700
60	12	I606066	I6A6066	I6C6066	I6E6066	I6W6066	0.54	13.72	125	192	600	2700
72	12	I607266	I6A7266	I6C7266	I6E7266	I6W7266	0.54	13.72	125	192	600	2700

Part Number Index

Part No.	Page	Part No.	Page	Part No.	Page	Part No.	Page	Part No.	Page
70100390	32	AX101188	21	AX102307	21	AX103465	16	AX103612	18
70101714	32	AX101189	21	AX102308	21	AX103467	16	AX103613	18
70102419	32	AX101190	21	AX102309	21	AX103468	16	AX103614	18
70102420	32	AX101407	24	AX102410	36	AX103469	16	AX103615	18
70102447	32	AX101409	24	AX102411	36	AX103470	16	AX103617	18
A0316446	24	AX101484	21	AX102412	36	AX103471	16	AX103619	15
A0318904	24	AX101527	21	AX102413	36	AX103472	17	AX103620	15
A0335015	24	AX101528	21	AX102415	36	AX103473	17	AX103621	15
A0394328	24	AX101529	21	AX102416	36	AX103474	17	AX103622	15
A0394330	24	AX101530	21	AX102417	36	AX103475	17	AX103623	15
A0394331	24	AX101531	21	AX102419	36	AX103476	16	AX103638	15
A0407004	37	AX101713	21	AX102420	36	AX103477	16	AX103639	15
A0407005	37	AX101714	21	AX102421	36	AX103478	17	AX103641	15
A0407006	37	AX101715	21	AX102428	36	AX103479	17	AX103642	15
A0407008	37	AX101729	24	AX102429	36	AX103493	16	AX103657	15
A0407009	37	AX101731	24	AX102430	36	AX103494	16	AX103673	15
A0407010	37	AX101741	24	AX102431	36	AX103496	16	AX103674	15
A0408829	11	AX101743	24	AX102432	36	AX103498	17	AX103675	15
A0408835	10	AX101746	36	AX102433	36	AX103500	17	AX103676	15
A0643206	37	AX101747	36	AX102481	36	AX103502	16	AX103677	15
A0643207	37	AX101748	36	AX102482	36	AX103503	16	AX103680	15
A0643208	37	AX101750	37	AX102483	36	AX103504	17	AX103681	15
A0649254	37	AX101751	37	AX102683	36	AX103505	17	AX103683	15
A0649869	24	AX101752	37	AX102684	36	AX103519	16	AX103684	15
A0403641	11	AX101754	37	AX102685	36	AX103521	17	AX103687	15
A0408829	11	AX101755	37	AX102686	36	AX103535	18	AX103691	15
AX100029	10	AX101756	37	AX102687	36	AX103536	18	AX103692	15
AX100041	22	AX101758	36	AX102688	36	AX103537	18	AX103693	15
AX100045	23	AX101759	36	AX102737	36	AX103538	18	AX103694	15
AX100046	23	AX101760	36	AX102738	36	AX103539	18	AX103695	15
AX100066	24	AX101762	36	AX103070	21	AX103540	18	AX103710	15
AX100068	22	AX101763	36	AX103071	21	AX103541	18	AX103711	15
AX100073	23	AX101764	36	AX103142	11	AX103543	18	AX103713	15
AX100079	24	AX101783	37	AX103143	14	AX103545	18	AX103714	15
AX100080	24	AX101784	37	AX103148	11	AX103546	18	AX103729	15
AX100084	24	AX101785	37	AX103149	9, 11	AX103547	18	AX103767	15
AX100088	24	AX101787	37	AX103150	11	AX103549	18	AX103783	15
AX100092	24	AX101788	37	AX103151	9	AX103550	18	AX103799	15
AX100094	24	AX101789	37	AX103152	11	AX103551	18	AX103800	15
AX100098	24	AX101791	10	AX103267	14	AX103552	18	AX103801	15
AX100116	22	AX101792	10	AX103272	14	AX103553	18	AX103802	15
AX100220	37	AX101793	10	AX103382	16	AX103554	18	AX103803	15
AX100221	37	AX101794	10	AX103383	16	AX103555	18	AX103818	15
AX100222	37	AX101797	23	AX103384	16	AX103557	18	AX103819	15
AX100495	23	AX101799	23	AX103385	16	AX103559	18	AX103821	15
AX100528	24	AX101801	23	AX103386	16	AX103560	18	AX103822	15
AX100532	24	AX101870	36	AX103387	16	AX103561	18	AX103837	15
AX100534	24	AX101871	36	AX103388	16	AX103563	18	AX103900	19
AX100538	24	AX101872	36	AX103403	16	AX103564	18	AX103901	16
AX100540	23	AX101874	36	AX103404	16	AX103565	18	AX103902	16
AX100542	23	AX101875	36	AX103406	16	AX103566	18	AX103910	14
AX100935	20	AX101876	36	AX103408	16	AX103567	18	AX103912	19
AX100936	21	AX101936	36	AX103409	16	AX103568	18	AX103913	19
AX100943	21	AX101937	36	AX103424	16	AX103569	18	AX103914	19
AX100944	21	AX101938	36	AX103439	16	AX103571	18	AX103915	14
AX100945	20	AX101940	36	AX103440	16	AX103573	18	AX103917	16
AX100951	9	AX101941	36	AX103441	16	AX103574	18	AX103928	14
AX101075	10	AX101942	36	AX103442	16	AX103575	18	AX103930	19
AX101077	10	AX101943	20	AX103443	16	AX103591	18	AX103932	14
AX101085	20	AX101981	10	AX103444	16	AX103592	18	AX103934	14, 19
AX101089	21	AX101982	10	AX103445	16	AX103593	18	AX104002	19
AX101090	21	AX101983	10	AX103447	16	AX103594	18	AX104240-B25	8
AX101091	21	AX101984	10	AX103449	16	AX103595	18	AX104240-S1	8
AX101092	21	AX102032	20	AX103450	16	AX103596	18	AX104241-B25	8
AX101098	20	AX102210	37	AX103451	16	AX103597	18	AX104241-S1	8
AX101100	11	AX102211	37	AX103453	16	AX103598	18	AX104242-B25	8
AX101101	11	AX102212	37	AX103454	16	AX103599	18	AX104242-S1	8
AX101114	21	AX102214	37	AX103455	16	AX103600	18	AX104243-B25	8
AX101119	21	AX102215	37	AX103456	16	AX103601	18	AX104243-S1	8
AX101120	21	AX102216	37	AX103457	16	AX103602	18	AX104244-B25	8
AX101169	24	AX102242	36	AX103458	16	AX103603	18	AX104244-S1	8
AX101170	24	AX102243	36	AX103459	16	AX103605	18	AX104245-B25	8
AX101171	24	AX102244	36	AX103461	16	AX103607	18	AX104245-S1	8
AX101186	21	AX102305	21	AX103463	16	AX103609	18	AX104246-B25	8
AX101187	21	AX102306	21	AX103464	16	AX103611	18	AX104246-S1	8

One Enterprise.
One Infrastructure.
One Partner.



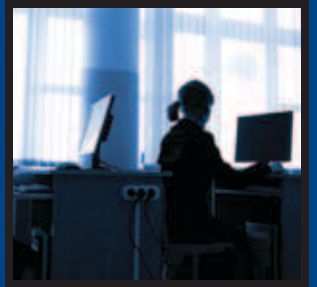
Part Number Index

Part No.	Page	Part No.	Page	Part No.	Page	Part No.	Page	Part No.	Page
AX104247-B25	8	AX104621	13	AX200666	32	B9A131	47	B9A507T	50
AX104247-S1	8	AX104624-02	37	AX200667	33	B9A132	47	B9A509T	50
AX104248-B25	8	AX104624-03	37	AX200668	32	B9A134	47	B9A510T	50
AX104248-S1	8	AX104624-04	37	AX200695	32	B9A135	47	B9A511T	50
AX104249-B25	8	AX104647	32	AX200698	33	B9A136	47	B9A513T	50
AX104249-S1	8	AX104648	32	AX200699	32	B9A137	47	B9A520T	50
AX104250-B25	8	AX104649	32	AX200795	32	B9A150	55	B9A601	41
AX104250-S1	8	AX104650	32	AX200799	32	B9A151	55	B9A601T	41
AX104251-B25	8	AX104651	33	AX200800	32	B9A152	55	B9A602	41
AX104251-S1	8	AX104652	33	AX200809	32	B9A153	55	B9A602T	41
AX104253-B25	8	AX104653	33	AX200811	32	B9A154	55	B9A604	41
AX104253-S1	8	AX104654	33	AX200900	32	B9A155	55	B9A604T	41
AX104254-B25	8	AX104655	33	AX201905	33	B9A159	55	B9A606	41
AX104254-S1	8	AX104656	33	AX202089	33	B9A170	55	B9A606T	41
AX104255-B25	8	AX104658	13	AX202523	33	B9A171	55	B9A609	41
AX104255-S1	8	AX104681	12	AX202835	33	B9A172	55	B9A609T	41
AX104256-B25	8	AX104682	12	AX202902	33	B9A173	55	B9A611	41
AX104256-S1	8	AX104683	12	AX203162	33	B9A174	55	B9A611T	42
AX104257-B25	8	AX104684	12	AX203390	33	B9A175	55	B9A612	41
AX104257-S1	8	AX104685	12	AX203567	9	B9A179	55	B9A612T	42
AX104258-B25	8	AX104686	21	AX203568	9	B9A202	51	B9A614	41
AX104258-S1	8	AX104695	11	AX203569	9	B9A204	51	B9A614T	42
AX104259-B25	8	AX104696	11	AX203870	33	B9A205	51	B9A616	41
AX104259-S1	8	AX104934	22	AX203895	9	B9A206	51	B9A616T	42
AX104260-B25	8	AX104705	12	AX203908	33	B9A207	51	B9A619	41
AX104260-S1	8	AX105002-S1	37	AX203909	33	B9A209	51	B9A619T	41
AX104261-B25	8	AX105007-B25	35	AX203910	33	B9A211	51	B9A620	41
AX104261-S1	8	AX105159	16	AX203911	33	B9A215	51	B9A620T	42
AX104262-B25	8	AX105160	16	AX203912	33	B9A230	43	B9A621	41
AX104262-S1	8	AX105162	12	AX203913	33	B9A230T	44	B9A621T	42
AX104263-B25	8	AX105164	12	AX203930	9	B9A231	43	B9A622	41
AX104263-S1	8	AX105165	12	B9A001	45	B9A231T	44	B9A622T	41
AX104264-B25	8	AX105166	12	B9A002	45	B9A232	43	B9A623	41
AX104264-S1	8	AX105167	12	B9A003	45	B9A232T	44	B9A623T	42
AX104265-B25	8	AX105172	15	B9A004	45	B9A233	43	B9A624	41
AX104265-S1	8	AX105173	15	B9A005	46	B9A233T	44	B9A624T	42
AX104268	9	AX105174	12	B9A006	46	B9A234	43	B9A811	50
AX104271	9	AX200056	32	B9A007	46	B9A234T	44	B9A812	50
AX104276	9	AX200057	32	B9A009	46	B9A235	43	B9A813	50
AX104278	9	AX200058	32	B9A010	46	B9A235T	44	B9A814	50
AX104279	9	AX200060	32	B9A011	46	B9A236	43	B9A815	50
AX104280	9	AX200082	32	B9A012	46	B9A236T	44	B9A816	50
AX104281	9	AX200084	32	B9A013	46	B9A237	43	B9A817	50
AX104282	9	AX200138	33	B9A014	46	B9A237T	44	B9A820	54
AX104283	9	AX200147	33	B9A015	46	B9A238	43	B9A821	54
AX104286	9	AX200192	32	B9A017	46	B9A238T	44	B9A822	54
AX104289	9	AX200196	32	B9A018	46	B9A240	43	B9A822T	50
AX104290	9	AX200200	33	B9A019	46	B9A240T	44	B9A831	50
AX104291	9	AX200234	33	B9A037	41	B9A241	43	B9A832	50
AX104293	9	AX200280	32	B9A037T	41	B9A241T	44	B9A833	50
AX104462	21	AX200341	32	B9A038	41	B9A242	44	B9A834	50
AX104467-B25	8	AX200413	32	B9A038T	41	B9A242T	44	B9A840	54
AX104467-S1	8	AX200458	32	B9A039	41	B9A243	43	B9A841	54
AX104489	36	AX200459	32	B9A039T	41	B9A243T	44	B9A842	54
AX104490	36	AX200507	33	B9A042	41	B9A244	43	B9A844	54
AX104491	36	AX200508	33	B9A042T	41	B9A244T	44	B9A845	54
AX104508-B25	17	AX200509	33	B9A043	41	B9A245	43	B9A846	54
AX104509-B25	17	AX200517	32	B9A043T	42	B9A245T	44	B9A847	54
AX104510-B25	17	AX200518	32	B9A044	41	B9A246	43	B9A848	54
AX104511-B25	17	AX200519	32	B9A044T	42	B9A246T	44	B9A849	54
AX104512-B25	17	AX200527	32	B9A045	41	B9A247	43	B9A890	53
AX104513-B25	17	AX200528	32	B9A045T	42	B9A247T	44	B9A891	53
AX104514-B25	17	AX200529	32	B9A048	41	B9A248	43	B9A892	53
AX104555	33	AX200580	32	B9A048T	42	B9A248T	44	B9A893	53
AX104556	33	AX200581	32	B9A100	42	B9A248T	44	B9A894	53
AX104557	33	AX200589	32	B9A101	42	B9A381T	53	B9A895	53
AX104558	33	AX200603	32	B9A101	42	B9A382T	53	B9A896	53
AX104572	17	AX200624	32	B9A102	42	B9A384T	53	B9A897	53
AX104577	8	AX200653	32	B9A104	42	B9A386T	53	B9B005	46
AX104593	9	AX200657	32	B9A107	42	B9A389T	53	B9B006	46
AX104616	13	AX200658	32	B9A111	42	B9A391T	53	B9B007	46
AX104617	13	AX200659	33	B9A112	42	B9A393T	53	B9B009	46
AX104618	13	AX200660	32	B9A114	42	B9A398T	53	B9B010	46
AX104619	13	AX200664	32	B9A116	42	B9A500T	50	B9B011	46
AX104620	13	AX200665	32	B9A120	42	B9A502T	50	B9B012	46
				B9A130	47	B9A505T	50	B9B013	46

Part Number Index

Part No.	Page	Part No.	Page	Part No.	Page	Part No.	Page	Part No.	Page
B9B014	46	B9B237T	44	B9B821	54	B9C151	55	B9C601T	41
B9B015	46	B9B238	43	B9B822	54	B9C152	55	B9C602	41
B9B017	46	B9B238T	44	B9B830	50	B9C153	55	B9C602T	41
B9B018	46	B9B240	43	B9B831	50	B9C154	55	B9C604	41
B9B019	46	B9B240T	44	B9B832	50	B9C155	55	B9C604T	41
B9B037	41	B9B241	43	B9B833	50	B9C159	55	B9C606	41
B9B037T	41	B9B241T	44	B9B834	50	B9C170	55	B9C606T	41
B9B038	41	B9B242	43	B9B840	54	B9C171	55	B9C609	41
B9B038T	41	B9B242T	44	B9B841	54	B9C172	55	B9C609T	41
B9B039	41	B9B243	43	B9B842	54	B9C173	55	B9C611	41
B9B039T	41	B9B243T	44	B9B844	54	B9C174	55	B9C611T	42
B9B042	41	B9B244	43	B9B845	54	B9C175	55	B9C612	42
B9B042T	41	B9B244T	44	B9B846	54	B9C179	55	B9C612T	41
B9B043	41	B9B245	43	B9B847	54	B9C202	51	B9C614	42
B9B043T	42	B9B245T	44	B9B848	54	B9C204	51	B9C614T	41
B9B044	41	B9B246	43	B9B849	54	B9C205	51	B9C616	41
B9B044T	42	B9B246T	44	B9B890	53	B9C206	51	B9C616T	42
B9B045	41	B9B247	43	B9B891	53	B9C207	51	B9C619	41
B9B045T	42	B9B247T	44	B9B892	53	B9C209	51	B9C619T	41
B9B048	41	B9B248	43	B9B893	53	B9C211	51	B9C620	41
B9B048T	42	B9B248T	44	B9B894	53	B9C215	51	B9C620T	42
B9B100	42	B9B381T	53	B9B895	53	B9C230	43	B9C621	42
B9B101	42	B9B382T	53	B9B896	53	B9C230T	44	B9C621T	41
B9B102	42	B9B384T	53	B9B897	53	B9C231	43	B9C622	41
B9B104	42	B9B386T	53	B9C001	45	B9C231T	44	B9C622T	41
B9B107	42	B9B389T	53	B9C002	45	B9C232	43	B9C623	41
B9B111	42	B9B391T	53	B9C003	45	B9C232T	44	B9C623T	42
B9B112	42	B9B393T	53	B9C004	45	B9C233	43	B9C810	50
B9B114	42	B9B398T	53	B9C005	46	B9C233T	44	B9C811	50
B9B116	42	B9B500T	50	B9C006	46	B9C234	43	B9C812	50
B9B120	42	B9B502T	50	B9C007	46	B9C234T	44	B9C813	50
B9B130	47	B9B505T	50	B9C009	46	B9C235	43	B9C814	50
B9B131	47	B9B507T	50	B9C010	46	B9C235T	44	B9C815	50
B9B132	47	B9B509T	50	B9C011	46	B9C236	43	B9C816	50
B9B134	47	B9B510T	50	B9C012	46	B9C236T	44	B9C817	50
B9B135	47	B9B511T	50	B9C013	46	B9C237	43	B9C820	54
B9B136	47	B9B513T	50	B9C014	46	B9C237T	44	B9C821	54
B9B137	47	B9B520T	50	B9C015	46	B9C238	43	B9C822	54
B9B150	55	B9B601	41	B9C017	46	B9C238T	44	B9C830	50
B9B151	55	B9B601T	41	B9C018	46	B9C240	43	B9C831	50
B9B152	55	B9B602	41	B9C019	46	B9C240T	44	B9C832	50
B9B153	55	B9B602T	41	B9C037	41	B9C241	43	B9C833	50
B9B154	55	B9B604	41	B9C037T	41	B9C241T	44	B9C834	50
B9B155	55	B9B604T	41	B9C038	41	B9C242	43	B9C840	54
B9B159	55	B9B606	41	B9C038T	41	B9C242T	44	B9C841	54
B9B170	55	B9B606T	41	B9C039	41	B9C243	43	B9C842	54
B9B171	55	B9B609	41	B9C039T	41	B9C243T	44	B9C844	54
B9B172	55	B9B609T	41	B9C042	41	B9C244	43	B9C845	54
B9B173	55	B9B611	41	B9C042T	41	B9C244T	44	B9C846	54
B9B174	55	B9B611T	42	B9C043	41	B9C245	43	B9C847	54
B9B175	55	B9B612	41	B9C043T	42	B9C245T	44	B9C848	54
B9B179	55	B9B612T	42	B9C044	41	B9C246	43	B9C849	54
B9B202	51	B9B614	41	B9C044T	42	B9C246T	44	B9C890	53
B9B204	51	B9B614T	42	B9C045	41	B9C247	43	B9C891	53
B9B205	51	B9B616	41	B9C045T	42	B9C247T	44	B9C892	53
B9B206	51	B9B616T	42	B9C048	41	B9C248	43	B9C893	53
B9B207	51	B9B619	41	B9C048T	42	B9C248T	44	B9C894	53
B9B209	51	B9B619T	41	B9C100	42	B9C381T	53	B9C895	53
B9B211	51	B9B620	41	B9C101	42	B9C382T	53	B9C896	53
B9B215	51	B9B620T	42	B9C102	42	B9C384T	53	B9C897	53
B9B230	43	B9B621	41	B9C104	42	B9C386T	53	B9E001	45
B9B230T	44	B9B621T	42	B9C107	42	B9C389T	53	B9E002	45
B9B231	43	B9B622	41	B9C111	42	B9C391T	53	B9E003	45
B9B231T	44	B9B622T	41	B9C112	42	B9C393T	53	B9E004	45
B9B232	43	B9B623	41	B9C114	42	B9C398T	53	B9E005	46
B9B232T	44	B9B623T	42	B9C116	42	B9C500T	50	B9E006	46
B9B233	43	B9B810	50	B9C120	42	B9C502T	50	B9E007	46
B9B233T	44	B9B811	50	B9C130	47	B9C505T	50	B9E009	46
B9B234	43	B9B812	50	B9C131	47	B9C507T	50	B9E010	46
B9B234T	44	B9B813	50	B9C132	47	B9C509T	50	B9E011	46
B9B235	43	B9B814	50	B9C134	47	B9C510T	50	B9E012	46
B9B235T	44	B9B815	50	B9C135	47	B9C511T	50	B9E013	46
B9B236	43	B9B816	50	B9C136	47	B9C513T	50	B9E014	46
B9B236T	44	B9B817	50	B9C137	47	B9C520T	50	B9E015	46
B9B237	43	B9B820	54	B9C150	55	B9C601	41	B9E017	46

One Enterprise.
One Infrastructure.
One Partner.



Part Number Index

Part No.	Page	Part No.	Page	Part No.	Page	Part No.	Page	Part No.	Page
B9E018	46	B9E240	43	B9E831	50	B9W154	55	B9W604	41
B9E019	46	B9E240T	44	B9E832	50	B9W155	55	B9W604T	41
B9E037	41	B9E241	43	B9E833	50	B9W159	55	B9W606	41
B9E037T	41	B9E241T	44	B9E834	50	B9W170	55	B9W606T	41
B9E038	41	B9E242	43	B9E840	54	B9W171	55	B9W609	41
B9E038T	41	B9E242T	44	B9E841	54	B9W172	55	B9W609T	41
B9E039	41	B9E243	43	B9E842	54	B9W173	55	B9W611	41
B9E039T	41	B9E243T	44	B9E844	54	B9W174	55	B9W611T	42
B9E042	41	B9E244	43	B9E845	54	B9W175	55	B9W612	41
B9E042T	41	B9E244T	44	B9E846	54	B9W179	55	B9W612T	42
B9E043	41	B9E245	43	B9E847	54	B9W202	51	B9W614	41
B9E043T	42	B9E245T	44	B9E848	54	B9W204	51	B9W614T	42
B9E044	41	B9E246	43	B9E849	54	B9W205	51	B9W616	41
B9E044T	42	B9E246T	44	B9E890	53	B9W206	51	B9W616T	42
B9E045	41	B9E247	43	B9E891	53	B9W207	51	B9W619	41
B9E045T	42	B9E247T	44	B9E892	53	B9W209	51	B9W619T	41
B9E048	41	B9E248	43	B9E893	53	B9W211	51	B9W620	41
B9E048T	42	B9E248T	44	B9E894	53	B9W215	51	B9W620T	42
B9E100	42	B9E381T	53	B9E895	53	B9W230	43	B9W621	41
B9E101	42	B9E382T	53	B9E896	53	B9W230T	44	B9W621T	42
B9E102	42	B9E384T	53	B9E897	53	B9W231	43	B9W622	41
B9E104	42	B9E386T	53	B9W001	45	B9W231T	44	B9W622T	41
B9E107	42	B9E389T	53	B9W002	45	B9W232	44	B9W623	41
B9E111	42	B9E391T	53	B9W003	45	B9W232T	44	B9W623T	42
B9E112	42	B9E393T	53	B9W004	45	B9W233	43	B9W810	50
B9E114	42	B9E398T	53	B9W005	46	B9W233T	44	B9W811	50
B9E116	42	B9E500T	50	B9W006	46	B9W234	43	B9W812	50
B9E120	42	B9E502T	50	B9W007	46	B9W234T	44	B9W813	50
B9E130	47	B9E505T	50	B9W009	46	B9W235	43	B9W814	50
B9E131	47	B9E507T	50	B9W010	46	B9W235T	44	B9W815	50
B9E132	47	B9E509T	50	B9W011	46	B9W236	43	B9W816	50
B9E134	47	B9E510T	50	B9W012	46	B9W236T	44	B9W817	50
B9E135	47	B9E511T	50	B9W013	46	B9W237	43	B9W820	54
B9E136	47	B9E513T	50	B9W014	46	B9W237T	44	B9W821	54
B9E137	47	B9E520T	50	B9W015	46	B9W238	43	B9W822	54
B9E150	55	B9E601	41	B9W017	46	B9W238T	44	B9W830	50
B9E151	55	B9E601T	41	B9W018	46	B9W240	43	B9W831	50
B9E152	55	B9E602	41	B9W019	46	B9W240T	44	B9W832	50
B9E153	55	B9E602T	41	B9W037	41	B9W241	43	B9W833	50
B9E154	55	B9E604	41	B9W037T	41	B9W241T	44	B9W834	50
B9E155	55	B9E604T	41	B9W038	41	B9W242	43	B9W840	54
B9E159	55	B9E606	41	B9W038T	41	B9W242T	44	B9W841	54
B9E170	55	B9E606T	41	B9W039	41	B9W243	43	B9W842	54
B9E171	55	B9E609	41	B9W039T	41	B9W243T	44	B9W844	54
B9E172	55	B9E609T	41	B9W042	41	B9W244	43	B9W845	54
B9E173	55	B9E611	41	B9W042T	41	B9W244T	44	B9W846	54
B9E174	55	B9E611T	42	B9W043	41	B9W245	43	B9W847	54
B9E175	55	B9E612	41	B9W043T	42	B9W245T	44	B9W848	54
B9E179	55	B9E612T	42	B9W044	41	B9W246	43	B9W849	54
B9E202	51	B9E614	41	B9W044T	42	B9W246T	44	B9W890	53
B9E204	51	B9E614T	42	B9W045	41	B9W247	43	B9W891	53
B9E205	51	B9E616	41	B9W045T	42	B9W247T	44	B9W892	53
B9E206	51	B9E616T	42	B9W048	41	B9W248	43	B9W893	53
B9E207	51	B9E619	41	B9W048T	42	B9W248T	44	B9W894	53
B9E209	51	B9E619T	41	B9W100	42	B9W381T	53	B9W895	53
B9E211	51	B9E620	41	B9W101	42	B9W382T	53	B9W896	53
B9E215	51	B9E620T	42	B9W102	42	B9W384T	53	B9W897	53
B9E230	43	B9E621	41	B9W104	42	B9W386T	53	B96551	48
B9E230T	44	B9E621T	42	B9W107	42	B9W389T	53	B96566	48
B9E231	43	B9E622	41	B9W111	42	B9W391T	53	B96577	48
B9E231T	44	B9E622T	41	B9W112	42	B9W393T	53	B96570	48
B9E232	43	B9E623	41	B9W114	42	B9W398T	53	B96571	48
B9E232T	44	B9E623T	42	B9W116	42	B9W500T	50	B96572	48
B9E233	43	B9E810	50	B9W120	42	B9W502T	50	B96575	48
B9E233T	44	B9E811	50	B9W130	47	B9W505T	50	B96639	48
B9E234	43	B9E812	50	B9W131	47	B9W507T	50	B96915	45
B9E234T	44	B9E813	50	B9W132	47	B9W509T	50	B96919	45
B9E235	43	B9E814	50	B9W134	47	B9W510T	50	B97112	45
B9E235T	44	B9E815	50	B9W135	47	B9W511T	50	B98086	45
B9E236	43	B9E816	50	B9W136	47	B9W513T	50	F40G0001	25
B9E236T	44	B9E817	50	B9W137	47	B9W520T	50	F40G0002	25
B9E237	43	B9E820	54	B9W150	55	B9W601	41	F40G0003	25
B9E237T	44	B9E821	54	B9W151	55	B9W601T	41	F40G0004	25
B9E238	43	B9E822	54	B9W152	55	B9W602	41	F40G0005	25
B9E238T	44	B9E830	50	B9W153	55	B9W602T	41	F40G0006	25

Part Number Index

Part No.	Page	Part No.	Page	Part No.	Page	Part No.	Page	Part No.	Page
F40G0007	25	FA400299	28	FA600150	26	FA600225	26	I6A4855	57
F40G0008	25	FA400300	28	FA600151	26	FA600226	26	I6A4866	57
F40G0009	25	FA400301	28	FA600152	26	FA600227	26	I6A6055	57
F40G0010	25	FA400302	28	FA600153	26	FA600228	26	I6A6066	57
F40G0011	25	FA400303	28	FA600154	26	FA600229	26	I6A7255	57
F40G0012	25	FA400304	28	FA600155	26	FA600230	26	I6A7266	57
F40G0013	25	FA400305	28	FA600156	26	FA600231	26	I6C1255	57
F40G0014	25	FA400306	28	FA600157	26	FA600232	26	I6C1266	57
F40G0015	25	FA400307	28	FA600158	26	FA600233	26	I6C1855	57
F40G0016	25	FA400308	28	FA600159	26	FA600234	26	I6C1866	57
F40G0017	25	FA400309	28	FA600160	26	FA600235	26	I6C2455	57
F40G0018	25	FA400310	28	FA600161	26	FA600236	26	I6C2466	57
F40G0019	25	FA400311	28	FA600162	26	FA600237	26	I6C3655	57
F40G0020	25	FA400312	28	FA600163	26	FA600238	26	I6C3666	57
F40G0021	25	FA400313	28	FA600164	26	FA600239	26	I6C4855	57
F40G0022	25	FA400314	28	FA600165	26	FA600240	26	I6C4866	57
F40G0023	25	FA400315	28	FA600166	26	FA600241	26	I6C6055	57
F40G0024	25	FA400316	28	FA600167	26	FA600242	26	I6C6066	57
F40G0025	25	FA400317	28	FA600168	26	FA600243	26	I6C7255	57
F40G0026	25	FA400318	28	FA600169	26	FA600244	26	I6C7266	57
F40G0027	25	FA400319	28	FA600170	26	FA600245	26	I6E1255	57
F40G0028	25	FA400320	28	FA600171	26	FA600246	26	I6E1266	57
F40G0029	25	FA400321	28	FA600172	26	FA800000	35	I6E1855	57
FA400247	28	FA400322	28	FA600173	26	FA800001	35	I6E1866	57
FA400248	28	FA400323	28	FA600174	26	FA800002	35	I6E2455	57
FA400249	28	FA400324	28	FA600175	26	FA800003	35	I6E2466	57
FA400250	28	FA400325	28	FA600176	26	FA800004	35	I6E3655	57
FA400251	28	FA400326	28	FA600177	26	FA800005	35	I6E3666	57
FA400252	28	FA400327	28	FA600178	26	FA800006	35	I6E4855	57
FA400253	28	FA400328	28	FA600179	26	FA800007	35	I6E4866	57
FA400254	28	FA400329	28	FA600180	26	FA800008	35	I6E6055	57
FA400255	28	FA400330	28	FA600181	26	FA800009	35	I6E6066	57
FA400256	28	FA400331	28	FA600182	26	FA800010	35	I6E7255	57
FA400257	28	FA400332	28	FA600183	26	FA800011	35	I6E7266	57
FA400258	28	FA400333	28	FA600184	26	FA800012	35	I6W1255	57
FA400259	28	FA400334	28	FA600185	26	I1A0255	57	I6W1266	57
FA400260	28	FA400335	28	FA600186	26	I1A0266	57	I6W1855	57
FA400261	28	FA400336	28	FA600187	26	I1A0455	57	I6W1866	57
FA400262	28	FA400337	28	FA600188	26	I1A0466	57	I6W2455	57
FA400263	28	FA400338	28	FA600189	26	I1A0655	57	I6W2466	57
FA400264	28	FA400339	28	FA600190	26	I1A0666	57	I6W3655	57
FA400265	28	FA400340	28	FA600191	26	I1C0255	57	I6W3666	57
FA400266	28	FA400341	28	FA600192	26	I1C0266	57	I6W4855	57
FA400267	28	FA400342	28	FA600193	26	I1C0455	57	I6W4866	57
FA400268	28	FA400343	28	FA600194	26	I1C0466	57	I6W6055	57
FA400269	28	FA400344	28	FA600195	26	I1C0655	57	I6W6066	57
FA400270	28	FA400345	28	FA600196	26	I1C0666	57	I6W7255	57
FA400271	28	FA400346	28	FA600197	26	I1E0255	57	I6W7266	57
FA400272	28	FA400347	28	FA600198	26	I1E0266	57	I100255	57
FA400273	28	FA400348	28	FA600199	26	I1E0455	57	I100266	57
FA400274	28	FA400349	28	FA600200	26	I1E0466	57	I100455	57
FA400275	28	FA400350	28	FA600201	26	I1E0655	57	I100466	57
FA400276	28	FA400351	28	FA600202	26	I1E0666	57	I100655	57
FA400277	28	FA400352	28	FA600203	26	I1W0255	57	I100666	57
FA400278	28	FA400353	28	FA600204	26	I1W0266	57	I400855	57
FA400279	28	FA400354	28	FA600205	26	I1W0455	57	I400866	57
FA400280	28	FA400355	28	FA600206	26	I1W0466	57	I601255	57
FA400281	28	FA400356	28	FA600207	26	I1W0655	57	I601266	57
FA400282	28	FA400357	28	FA600208	26	I1W0666	57	I601855	57
FA400283	28	FA400358	28	FA600209	26	I4A0855	57	I601866	57
FA400284	28	FA600135	26	FA600210	26	I4A0866	57	I602455	57
FA400285	28	FA600136	26	FA600211	26	I4C0855	57	I602466	57
FA400286	28	FA600137	26	FA600212	26	I4C0866	57	I603655	57
FA400287	28	FA600138	26	FA600213	26	I4E0855	57	I603666	57
FA400288	28	FA600139	26	FA600214	26	I4E0866	57	I604855	57
FA400289	28	FA600140	26	FA600215	26	I4W0855	57	I604866	57
FA400290	28	FA600141	26	FA600216	26	I4W0866	57	I606055	57
FA400291	28	FA600142	26	FA600217	26	I6A1255	57	I606066	57
FA400292	28	FA600143	26	FA600218	26	I6A1266	57	I607255	57
FA400293	28	FA600144	26	FA600219	26	I6A1855	57	I607266	57
FA400294	28	FA600145	26	FA600220	26	I6A1866	57	MX100154R	35
FA400295	28	FA600146	26	FA600221	26	I6A2455	57		
FA400296	28	FA600147	26	FA600222	26	I6A2466	57		
FA400297	28	FA600148	26	FA600223	26	I6A3655	57		
FA400298	28	FA600149	26	FA600224	26	I6A3666	57		

Fiber Pre-Term Made Easy

Pre-Terminated Fiber
Cabling Solutions

- **EASY** to Configure
- **EASY** to Order
- **EASY** to Install

Now Available!
FiberExpress®
Ultra HD
Patch Panels



For more information, contact us
at **1.800.BELDEN.1**(1.800.235.3361)
or visit www.belden.com.

BELDEN
SENDING ALL THE RIGHT SIGNALS®

GLOBAL LOCATIONS

For worldwide Enterprise Sales
and Technical Support, visit:
www.belden.com



UNITED STATES

Division Headquarters—Americas

2200 U.S. Highway 27 South
Richmond, IN 47374
Phone: 765-983-5200
Inside Sales: 800-235-3361
Fax: 765-983-5294
info@belden.com
www.belden.com

CANADA

National Business Center

2280 Alfred-Nobel
Suite 200
Saint-Laurent, QC
Canada H4S 2A4
Phone: 514-822-2345
Fax: 514-822-7979

LATIN AMERICA and the CARIBBEAN ISLANDS

Regional Office

Insurgentes Sur # 800 Piso 9
Col- Del Valle
México, D.F.
Phone: (52) 55-5523-7733
Fax: 55-5523-8077
salesmex@belden.com