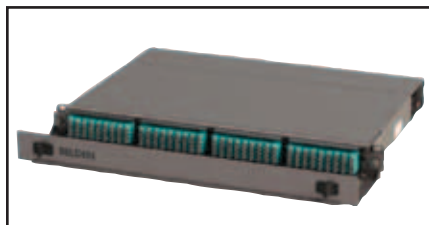
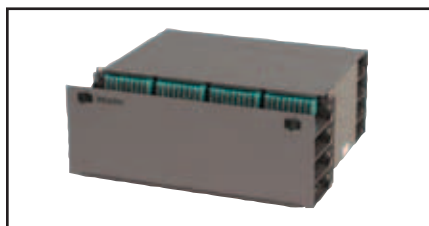


## FiberExpress Ultra HD System

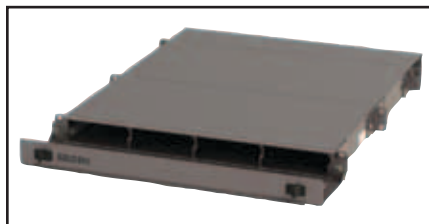
Patch Panel Housings, Patch Panel Fixed Shelves and Splice Housing Kit



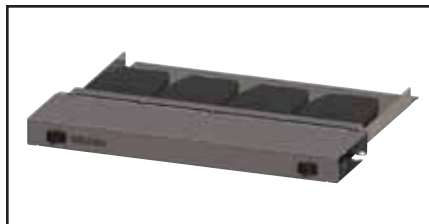
AX104681 FiberExpress Ultra HD 1U Patch Panel Housing (shown loaded)



AX104683, FiberExpress Ultra HD 4U Patch Panel Housing (shown loaded)



FiberExpress Ultra HD Patch Panel 1U (AX104681) with mounted Splice Housing Kit (AX104684)



AX105164, FiberExpress Ultra HD 1U Patch Panel Standard Shelf



AX105167, FiberExpress Ultra HD 4U Patch Panel Recessed Shelf

### FiberExpress Ultra HD System

Belden's FiberExpress Ultra HD System provides designers complete flexibility to architect a fiber connectivity solution to adapt to the varying port type, count and density needs in Data Centers, SANs and traditional LANs. Crafted with a back to basics approach, intuitive lightweight components are installer friendly ensuring fast clean installs. Looking to the future, a unique modular design clears the path to ensure 10G today and a seamless transition to 40G/100G when it's needed.

### Feature-Rich FiberExpress Ultra HD Patch Panel Housings

As density continues to increase it brings both opportunity and challenge to network operators and installers. As an industry leader supporting up to 72 MPO or 72 LC Duplex ports per rack unit, combined with an optional splice housing supporting up to 144 fusion splices per rack unit the FX UHD delivers on the opportunity to reduce the physical footprint and ultimately the cost to implement, maintain and operate. Challenges are easily overcome with innovative features such as sliding & tilting drawers to enhance visibility and

eliminate errors during installation and MACs. Tool-less removal of drawers and trays reduce weight of even the largest 4U platform to a safe level for one installer to handle on a ladder.

### Entry-Level FiberExpress Ultra HD Patch Panel Fixed Shelf

When lower density, cost effective solutions are needed the FX UHD Shelf provides the same great look and feel while maintaining compatibility with the vast array of FX Ultra and FX Ultra HD modules. Coupled with Belden pre-term solutions features like recessed mounting, removable doors and shallow depth provide a suitable option for the most space constrained or obstructed environment.

### FiberExpress Ultra HD Splice Housing Kit

For field fusion spliced termination, the optional FiberExpress Ultra HD Splice Housing Kit can be mounted in the back of the Patch Panel Housings. The splice housing kit has a maximum capacity up to 144 fusion splices and its size is 1U. One Splice Housing Kit is needed for each rack-unit where splicing is required. Slice trays and splice holders are included in the Splice Housing kits.

FiberExpress Ultra HD System Capacity	Loaded with FXU HD Frames / Cassettes	Total LC Duplex / MPO connectors	Loaded with FXU Frames / Cassettes	Total LC Duplex / MPO connectors
1U Patch Panel Housing	4	72	4	48
2U Patch Panel Housing	8	144	8	96
4U Patch Panel Housing	16	288	16	192
1U Patch Panel Shelf	4	72	4	48
4U Patch Panel Shelf	10	180	10	120

Example: 288 LC Duplex connectors means 576 fibers.

Description	Belden Part Number
-------------	--------------------

### FiberExpress Ultra HD System

#### Patch Panel Housings

1U Housing, Empty, Titanium Finish	AX104681
2U Housing, Empty, Titanium Finish	AX104682
4U Housing, Empty, Titanium Finish	AX104683

#### Patch Panel Shelves

1U Standard Fixed Shelf, Empty, Titanium Finish	AX105164
1U Recessed Fixed Shelf, Empty, Titanium Finish	AX105165
4U Standard Fixed Shelf, Empty, Titanium Finish	AX105166
4U Recessed Fixed Shelf, Empty, Titanium Finish	AX105167

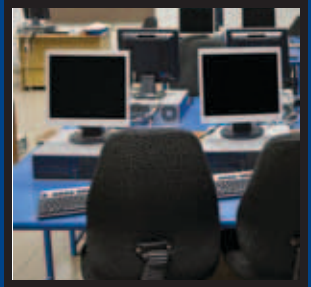
#### Splice Housing Kits

Optional 1U Splice Housing Kit, 144 Splices, Titanium Finish	AX104684
Optional 1U Splice Housing Kit, 72 Splices, Titanium Finish	AX105174

#### Tools & Accessories

FiberExpress Ultra HD Release Tool	AX104685
Patch Cord Tray Cover, Titanium Finish	AX105162
Splice Accessory Kit (144 Shrink Tubes, Velcro, Wire Markers, Cable Ties)	AX104705

One Enterprise.  
One Infrastructure.  
One Partner.



**FiberExpress Ultra HD System** (continued)  
Pre-Terminated Cassettes and Frames

**FiberExpress Ultra HD Pre-Terminated Cassettes**

FiberExpress Ultra HD Pre-Terminated Cassettes come with 3 MPO male connectors at the rear of the Cassette and 18 LC Duplex connectors (36 fibers) in the front. They are available in multimode (OM3 and OM4 Low Loss) and single-mode versions. The Ultra HD Cassettes can also be easily inserted or removed from the patch panel housing for enhanced maintenance capabilities.

**FiberExpress Ultra HD Frames**

FiberExpress Ultra HD Frames have been designed to reach the maximum capacity: 18 LC Duplex connectors (36 fibers) per frame or 18 MPO connectors per frame. They are available in both multimode (OM3-OM4) and single-mode versions. The Ultra HD Frames can be easily inserted or removed from the patch panel housing for enhanced maintenance capabilities.

Color of Adapters	Multimode, OM3 - OM4, 50 µm	Single-mode, OS2
LC	Aqua	Blue
MPO	Aqua	Black

Description	Belden Part Number		
	Multimode, OM3, 50 µm	Multimode, OM4, 50 µm, Low Loss	Single-mode, OS2

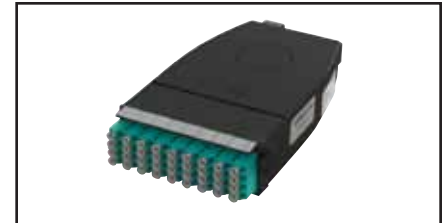
**FiberExpress Ultra HD System**

Pre-Terminated Cassettes			
LC Duplex - MPO (m), 18 ports, 36 fibers	AX104617	AX104658	AX104616

Description	Belden Part Number	
	Multimode, OM3-OM4, 50 µm	Single-mode, OS2

**FiberExpress Ultra HD System**

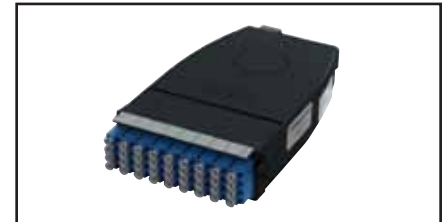
Frames		
LC Duplex, 18 ports, 36 fibers	AX104619	AX104618
18 MPO adapters	AX104620	AX104621



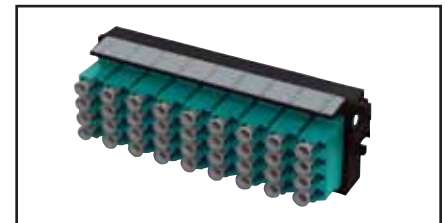
AX104617, FX UHD Pre-term cassette MPO-LC OM3 36 fibers, front view



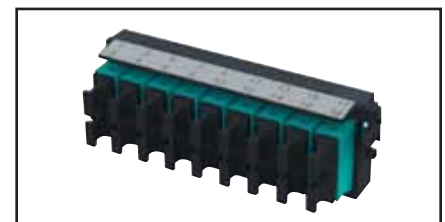
AX104617, FX UHD Pre-term cassette MPO-LC OM3 36 fibers, back view



AX104616, FX UHD Pre-term cassette MPO-LC SM 36 fibers

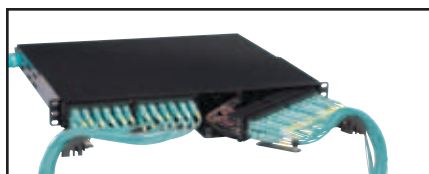


AX104619, FX UHD Frame LC OM3 36 fibers



AX104620, FX UHD Frame 18 MPO

## FiberExpress Ultra System Rack-mount and Wall-mount Patch Panels



AX103143, FiberExpress Ultra 1U Rack-mount Patch Panel (shown loaded)



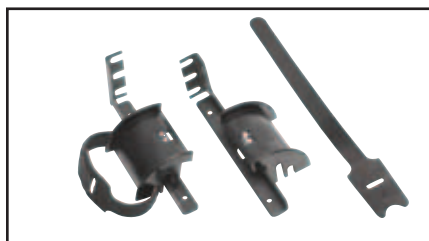
AX103267, FiberExpress Ultra 4U Rack-mount Patch Panel (shown loaded)



AX103928, FiberExpress Ultra Stackable Wall-mount Patch Panel



AX103928 and AX103932, FiberExpress Ultra Wall-mount Patch Panel with Spacer



AX103272, FiberExpress Ultra Patch Cord Management Brackets

### FiberExpress Ultra System

Belden's FiberExpress Ultra System is ultra-rich in user-friendly features. Designed to meet the needs of IT managers and their technical teams, Belden built the system around three core concepts:

- High Density
- Ease of installation
- Flexibility, scalability and manageability

The result is a fiber patching system that is easy to deploy, operate and maintain, while ensuring maximum uptime, uninterrupted availability and superior performance – whether in the data center, LAN backbone or storage area network (SAN). The system's modular design provides optimal flexibility and scalability to “future proof” your investment and to provide a low

total cost of ownership when compared with other fiber patching systems.

### FiberExpress Ultra Patch Panels

FiberExpress Ultra Patch Panels provide ultra high density connection while facilitating cable routing and patch cord management. Available in Rack-mount and Wall-mount versions, the Patch Panels are totally modular and scalable to accommodate future fiber build-out. Wall-mount version accommodates two (2) Frames or Cassettes for a maximum capacity of 48 fibers (LC). Rack-mount version is available in two sizes: 1U and 4U. 1U unit accommodates four (4) Frames or Cassettes for a maximum of 96 fibers (LC); 4U unit accommodates 12 Frames or Cassettes for a maximum of 288 fibers using LC connectors.

FiberExpress Ultra System Capacity	Frames	Cassettes	Splice Trays
1U, Rack-mount Patch Panel	4	4	2 x 12 in.
4U, Rack-mount Patch Panel	12	12	8 x 8 in.
Wall-mount Patch Panel	2	2	2 x 8 in.

Description	Belden Part Number
-------------	--------------------

### FiberExpress Ultra System

#### Rack-mount Patch Panels/Components

1U Patch Panel, 19 in., Black	AX103143
4U Patch Panel, 19 in., Black	AX103267
4U 23 in. Extension Brackets, Black	AX103910
Patch Cord Management Brackets, Black	AX103272
1U Patch Cord Cover	AX103915

#### Wall-mount Patch Panels/Components

Stackable Patch Panel, Black	AX103928
2-inch Spacer, Black	AX103932
Door Lock Kit	AX103934



**FiberExpress Ultra System** (continued)  
Pre-Terminated Cassettes

**FiberExpress Ultra Pre-Terminated Cassettes**

FiberExpress Ultra Cassettes come fully loaded with connector Bezels and pre-terminated with MPO male connector(s) at the rear of the Cassette. In combination with the Bezels and the

1-inch pull-out feature, the Cassette provides easy connection access. Cassettes can also be easily inserted or removed from the Patch Panels for enhanced maintenance capabilities. The Cassette's rear assembly and cover is available separately to provide additional installation capability.

Color of Adapters	Multimode, OM1, 62.5 µm	Multimode, OM2, 50 µm	Multimode, OM3-OM4, 50 µm	Single-mode, OS2	Single-mode, OS2 - APC
LC Duplex	Beige	Black	Aqua	Blue	Green
SC Simplex	Beige	Black	Aqua	Blue	Green
SC Duplex	Beige	Black	Aqua	Blue	Green
ST	Metal	Metal	Metal	Metal	—
MPO	Black	Black	Black	Black	Black

Description	Belden Part Number			
	Multimode, OM1, 62.5 µm	Multimode, OM2, 50 µm	Multimode, OM3, 50 µm	Single-mode, OS2

**FiberExpress Ultra System**

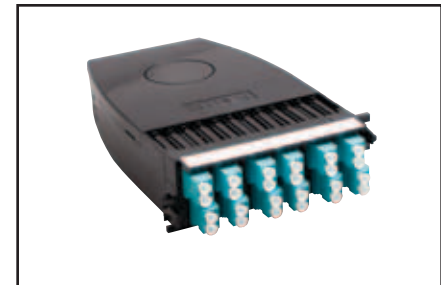
Pre-Terminated Cassettes				
LC Duplex - MPO (m), 6 fibers	AX103622	AX103676	AX103694	AX103802
LC Duplex with shutter - MPO (m), 6 fibers	AX103623	AX103677	AX103695	AX103803
LC Duplex - MPO (m), 12 fibers	AX103641	AX103683	AX103713	AX103821
LC Duplex with shutter - MPO (m), 12 fibers	AX103642	AX103684	AX103714	AX103822
LC Duplex - MPO (m), 24 fibers	AX103657	AX103687	AX103729	AX103837
SC Duplex - MPO (m), 6 fibers	AX103620	AX103674	AX103692	AX103800
SC Duplex with shutter - MPO (m), 6 fibers	AX103621	AX103675	AX103693	AX103801
SC Duplex - MPO (m), 12 fibers	AX103639	AX103681	AX103711	AX103819
ST - MPO (m), 6 fibers	AX103619	AX103673	AX103691	AX103799
ST - MPO (m), 12 fibers	AX103638	AX103680	AX103710	AX103818

Description	Belden Part Number
	Multimode, OM4 (Low Loss), 50 µm

**FiberExpress Ultra System**

Pre-Terminated Cassettes	
LC Duplex - MPO (m), 12 fibers	AX103767
LC Duplex - MPO (m), 24 fibers	AX103783

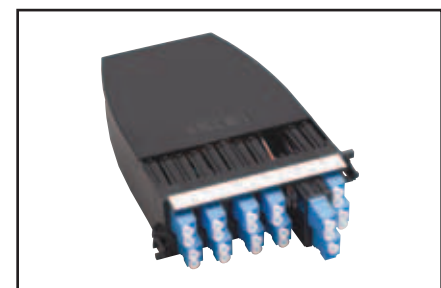
Pre-terminated Cassettes Type B (40G Path)	
LC Duplex - MPO (f), 12 fibers, 40G Path	AX105173
LC Duplex - MPO (f), 24 fibers, 40G Path	AX105172



AX103729, FiberExpress Ultra Pre-Terminated Cassette, LC-Duplex - MPO (m), OM3, front view

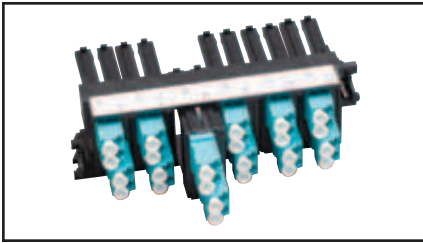


AX103729, FiberExpress Ultra Pre-Terminated Cassette, LC-Duplex - MPO (m), OM3, back view

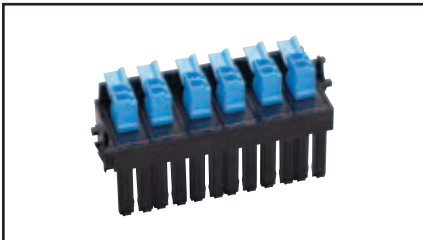


AX103837, FiberExpress Ultra Pre-Terminated Cassette, LC-Duplex - MPO (m), Single-mode, front view

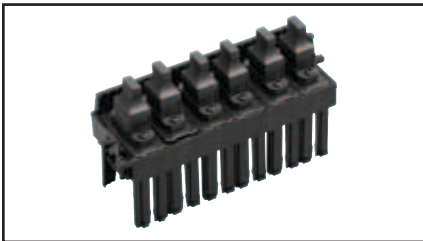
## FiberExpress Ultra System (continued) Frames



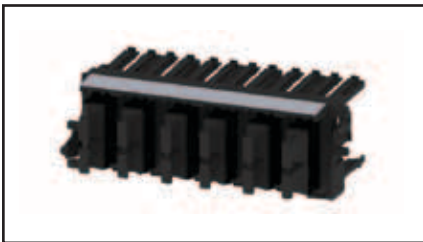
AX103465, FiberExpress Ultra Frame, LC Duplex



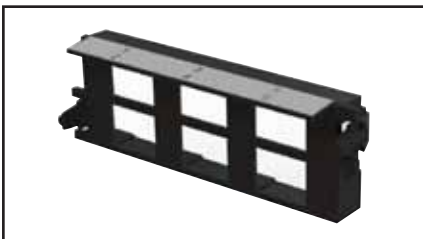
AX103503, FiberExpress Ultra Frame, LC Duplex with Shutter



AX103901, FiberExpress Ultra Frame, 6 MPO Adapters



AX103902, FiberExpress Ultra Frame, 12 MPO Adapters



AX1015160, KeyConnect Empty Frame 6 ports

### FiberExpress Ultra Frames

FiberExpress Ultra Frames – typically preloaded with Bezels – provide streamlined patch cord management and optimal design flexibility and single- or dual-connector options. A unique (patent pending) mechanism allows the Bezel to slide out 1-inch (2.5 cm) from the frame, providing easy connector access and patch

cord management. Available in a wide variety of connector types, in both multimode and single-mode versions, and in the newly recognized TIA/EIA multimode colors. The Bezels and Frames can be easily inserted or removed from the panel for enhanced maintenance capabilities. Each Frame can accommodate a maximum of six (6) Bezels. Frames with pigtailed come loaded with connector Bezels and 2-meter pigtailed.

Color of Adapters	Multimode, OM1, 62.5 μm	Multimode, OM2, 50 μm	Multimode, OM3-OM4, 50 μm	Single-mode, OS2	Single-mode, OS2 - APC
LC Duplex	Beige	Black	Aqua	Blue	Green
SC Simplex	Beige	Black	Aqua	Blue	Green
SC Duplex	Beige	Black	Aqua	Blue	Green
ST	Metal	Metal	Metal	Metal	–
MPO	Black	Black	Black	Black	Black

Description	Belden Part Number			
	Multimode, OM1, 62.5 μm	Multimode, OM2, 50 μm	Multimode, OM3-OM4, 50 μm	Single-mode, OS2

### FiberExpress Ultra System

Frames				
LC Duplex, 6 fibers	AX103387	AX103443	AX103457	AX103476
LC Duplex with shutter, 6 fibers	AX103388	AX103444	AX103458	AX103477
LC Duplex, 12 fibers	AX103408	AX103449	AX103463	AX103502
LC Duplex with shutter, 12 fibers	AX103409	AX103450	AX103464	AX103503
LC Duplex, 24 fibers	AX103424	AX103451	AX103465	AX103519
SC Simplex, 6 fibers	AX103383	AX103439	AX103453	AX103468
SC Simplex with shutter, 6 fibers	AX103384	AX103440	AX103454	AX103469
SC Simplex, 12 fibers	AX103404	AX103445	AX103459	AX103494
SC Duplex, 6 fibers	AX103385	AX103441	AX103455	AX103470
SC Duplex with shutter, 6 fibers	AX103386	AX103442	AX103456	AX103471
SC Duplex, 12 fibers	AX103406	AX103447	AX103461	AX103496
ST, 6 fibers	←	AX103382	→	AX103467
ST, 12 fibers	←	AX103403	→	AX103493
6 MPO adapters	←	AX103901	→	
12 MPO adapters	←	AX103902	→	
Blank Frame	←	AX105159	→	
Cassette Rear Assembly	←	AX103917	→	
KeyConnect Empty Frame, 6 ports	←	AX105160 *	→	

\* AX105160 will ONLY accept KeyConnect UTP Copper modules or KeyConnect fiber modules.

For available KeyConnect UTP Copper modules, please refer to the Belden Copper Catalog.

For available KeyConnect Fiber modules, please refer to page 36.

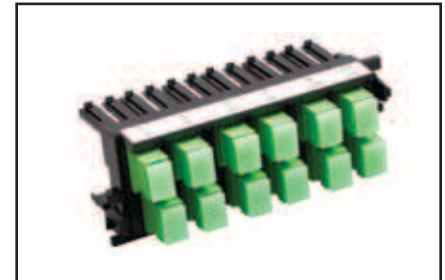


One Enterprise.  
One Infrastructure.  
One Partner.



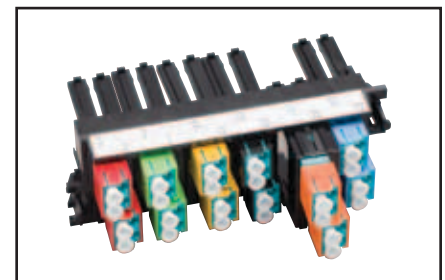
**FiberExpress Ultra System** (continued)  
Frames

Description	Belden Part Number Single-mode, OS2
<b>FiberExpress Ultra System</b>	
<b>Frames - APC</b>	
LC APC Duplex, 6 fibers	AX103478
LC APC Duplex with shutter, 6 fibers	AX103479
LC APC Duplex, 12 fibers	AX103504
LC APC Duplex with shutter, 12 fibers	AX103505
LC APC Duplex, 24 fibers	AX103521
SC APC Simplex, 6 fibers	AX103472
SC APC Simplex with shutter, 6 fibers	AX103473
SC APC Simplex, 12 fibers	AX103498
SC APC Duplex, 6 fibers	AX103474
SC APC Duplex with shutter, 6 fibers	AX103475
SC APC Duplex, 12 fibers	AX103500



AX103498, FiberExpress Ultra Frame, SC APC

Description	Belden Part Number
<b>FiberExpress Ultra System</b>	
<b>Color-Coded Icons for LC Duplex Adapters</b>	
Color-Coded Icon Kit for LC Duplex Adapters	AX104572 *
LC Duplex icon, Blue, pack of 25 units	AX104508-B25
LC Duplex icon, Orange, pack of 25 units	AX104509-B25
LC Duplex icon, Black, pack of 25 units	AX104510-B25
LC Duplex icon, Yellow, pack of 25 units	AX104511-B25
LC Duplex icon, Green, pack of 25 units	AX104512-B25
LC Duplex icon, Red, pack of 25 units	AX104513-B25
LC Duplex icon, Aqua, pack of 25 units	AX104514-B25



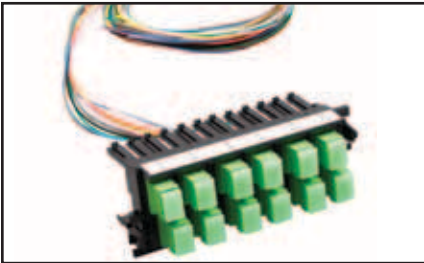
AX104572, FiberExpress Color-Coded Icon Kit, (shown on frame)

\*AX104572 includes colors Blue, Orange, Black, Yellow, Green and Red (2 icons per each color).

## FiberExpress Ultra System (continued) Frames with Pigtails



AX103575, FiberExpress Ultra Frame with Pigtails, LC Duplex (shown in packaging)



AX103607, FiberExpress Ultra Frame with Pigtails, SC APC Simplex

Description	Belden Part Number			
	Multimode, OM1, 62.5 μm	Multimode, OM2, 50 μm	Multimode, OM3, 50 μm	Single-mode, OS2

### FiberExpress Ultra System

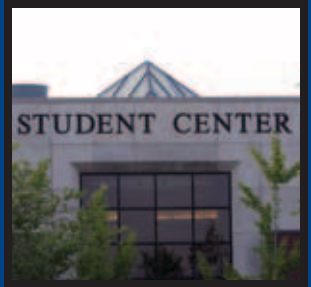
Frames with Pigtails				
LC Duplex with pigtails, 6 fibers	AX103539	AX103553	AX103567	AX103599
LC Duplex with shutter & pigtails, 6 fibers	AX103540	AX103554	AX103568	AX103600
LC Duplex with pigtails, 12 fibers	AX103545	AX103559	AX103573	AX103611
LC Duplex with shutter & pigtails, 12 fibers	AX103546	AX103560	AX103574	AX103612
LC Duplex with pigtails, 24 fibers	AX103547	AX103561	AX103575	AX103615
SC Simplex with pigtails, 6 fibers	AX103535	AX103549	AX103563	AX103591
SC Simplex with shutter & pigtails, 6 fibers	AX103536	AX103550	AX103564	AX103592
SC Simplex with pigtails, 12 fibers	AX103541	AX103555	AX103569	AX103603
SC Duplex with pigtails, 6 fibers	AX103537	AX103551	AX103565	AX103593
SC Duplex with shutter & pigtails, 6 fibers	AX103538	AX103552	AX103566	AX103594
SC Duplex with pigtails, 12 fibers	AX103543	AX103557	AX103571	AX103605

Description	Belden Part Number Single-mode, OS2
-------------	--

### FiberExpress Ultra System

Frames with Pigtails—APC	
LC APC Duplex with pigtails, 6 fibers	AX103601
LC APC Duplex with shutter & pigtails, 6 fibers	AX103602
LC APC Duplex with pigtails, 12 fibers	AX103613
LC APC Duplex with shutter & pigtails, 12 fibers	AX103614
LC APC Duplex with pigtails, 24 fibers	AX103617
SC APC Simplex with pigtails, 6 fibers	AX103595
SC APC Simplex with shutter & pigtails, 6 fibers	AX103596
SC APC Simplex with pigtails, 12 fibers	AX103607
SC APC Duplex with pigtails, 6 fibers	AX103597
SC APC Duplex with shutter & pigtails, 6 fibers	AX103598
SC APC Duplex with pigtails, 12 fibers	AX103609

One Enterprise.  
One Infrastructure.  
One Partner.



**FiberExpress Ultra System** (continued)  
Splice Tray Kits and Enclosures

**FiberExpress Ultra Splice Tray Kits and Enclosures**

FiberExpress Ultra Splice Tray Kits offer splicing solutions that support, protect and organize optical fibers to make splicing faster, easier to perform, more secure and error-free. Available in three sizes: each Splice Tray Kit contains one (1) organizer tray, fiber support and connection tubes, cable ties and identification

markers. The Kits feature rugged 20-gauge steel construction and a Lexan cover.

The Splice Enclosures provide a convenient area for bonding, grounding and termination of the cables, while maintaining the proper bend radius and intuitive cable routing. Available in Rack- and Wall-mount versions, they come equipped with all the hardware necessary to organize and protect cables and splices.

FiberExpress Ultra Splice Enclosure Capacity	Splice Trays
Wall-mount	4 x 10 in.
Rack-mount	6 x 12 in.

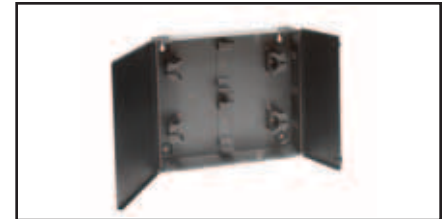
Splice Tray Optimal Capacity	Splices
8 in. Splice Tray	24
10 in. Splice Tray	36
12 in. Splice Tray	36

Description	Belden Part Number
-------------	--------------------

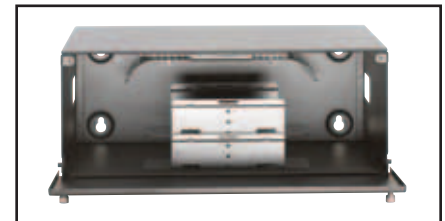
**FiberExpress Ultra System**

Wall- and Rack-mount Splice Enclosures	
Wall-mount Splice Enclosure, Black	AX103930
Rack-mount Splice Enclosure, 4U, Black	AX103900

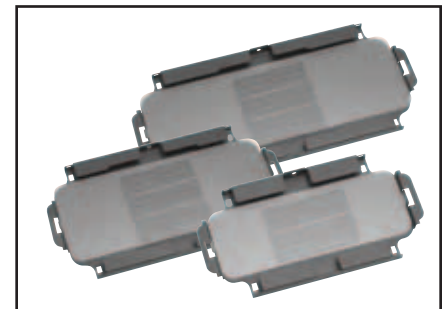
Splice Kits/Lock	
8 in. Splice Tray Kit	AX103912
10 in. Splice Tray Kit	AX103913
12 in. Splice Tray Kit	AX103914
Lock (for Wall-mount Splice Enclosure)	AX103934
Patch Panel and Splice Enclosure Flex Kit	AX104002



AX103930, FiberExpress Ultra Wall-mount Splice Enclosure



AX103900, FiberExpress Ultra Rack-mount Enclosure, 4U (with Splice Tray Caddy)



FiberExpress Ultra Splice Trays



## FiberExpress Manager

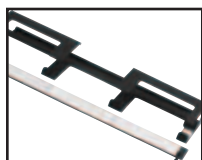
### Rack-mount Patch Panel, Shelves and Accessories



AX101943, FiberExpress Manager 1U Rack-mount Patch Panel



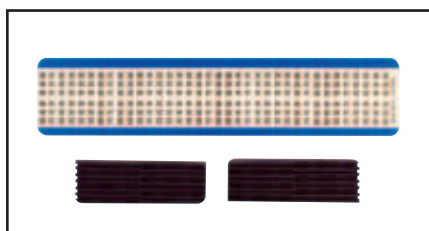
AX100935, FiberExpress Manager Shelf



AX102032, FiberExpress Manager 1U Cable Management Accessory



AX100945, Flex Kit



AX101098, Splice Holder Kit

#### FiberExpress Manager 1U

The FiberExpress Manager 1U Rack-mount Patch Panel is a low-cost, compact assembly designed for interconnection or splicing of optical fiber cables, using up to three FiberExpress Manager Modules. The low-profile design minimizes rack space to only 45 mm (1.75 in.). An optional FiberExpress Manager 1U Cable Management Accessory is also available.

#### FiberExpress Manager Shelf

FiberExpress Modules are rack-mounted using FiberExpress Manager Shelves. The shelves provide the total system with extra high connection density while facilitating cable routing and patch cord management. For

19- or 23-inch rack: 19 in. shelf holds up to 12 modules; 23 in. shelf holds up to 16 modules.

The Flex Kit contains tubes and manifolds designed to split cables into individual fiber strands, and is suitable for 6 fibers up to 12 fibers. It is necessary for use with loose tube cables or when the fiber cable count does not match the number of connections in the FiberExpress Manager Connector Module. The Flex Kit tubes help to maintain proper fiber bend radius. One kit is required per 12 modules (one 19 in. shelf).

A Splice Holder Kit can be used to hold fusion or mechanical splices. Each splice holder can handle up to 6 splices.

FiberExpress Manager Patch Panel Capacity	Connector Modules
1U Patch Panel	3
4U shelf, 19 in.	12
4U shelf, 23 in.	16

Description	Belden Part Number
<b>FiberExpress Manager</b>	
<b>Patch Panels / Accessories</b>	
1U, Rack-mount Patch Panels, 19 in., 5 kg (11 lb)	AX101943
4U Shelf, 19 in., 8.2 kg (18 lb)	AX101085
4U Shelf, 23 in., 10.9 kg (24 lb)	AX100935
1U, Cable Management Accessory, 19 in., 1 kg (2 lb)	AX102032
Flex Kit, 19 in.	AX100945
Splice Holder Kit (4 x Splice Holders of 6 positions & 4 x Wire Markers)	AX101098

One Enterprise.  
One Infrastructure.  
One Partner.



**FiberExpress Manager** (continued)  
Connector Modules and Pre-Terminated Cassettes

**FiberExpress Manager Connector Module**

The Connector Module is the basic building block of the FiberExpress Manager. It is designed with a unique release mechanism that allows it to slide from the shelf like a PC card, easing management of patch cords.



AX102307 LC Duplex Pre-Terminated Connector Module



AX101484, FiberExpress Manager Connector Module, 6 MPO adapters

Description	Belden Part Number	
	Multimode	Single-mode

**FiberExpress Manager**

Connector Modules			
LC Duplex Aqua adapters, 12 fibers	AX103071	–	
LC Duplex Aqua adapters, 24 fibers	AX103070	–	
LC Duplex, 12 fibers	AX101528	AX101527	
LC Duplex, 24 fibers	AX102306	AX102305	
SC Simplex, 6 fibers	–	AX100943	
SC Duplex, 6 fibers	AX101092	AX100944	
SC Duplex, 12 fibers	AX101714	AX101713	
SC Duplex (ST in), 12 fibers	AX101120	AX101119	
SC Duplex with pigtails (UPC), 12 fibers	–	AX101715	
ST, 6 fibers	AX101089	AX100936	
ST, 12 fibers	AX101187	AX101186	
MPO, 6 adapters	←	AX101484	→
Blank	←	AX104462	→

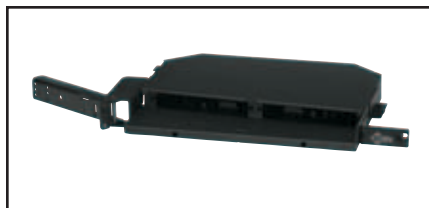
Description	Belden Part Number			
	Multimode, OM1, 62.5 μm	Multimode, OM2-OM3, 50 μm	Multimode, OM4 (Low Loss), 50 μm	Single-mode, OS2

**FiberExpress Manager**

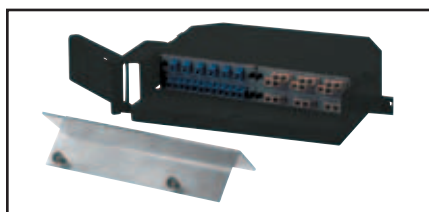
Pre-Terminated Connector Modules				
LC Duplex - MPO(m), 12 fibers	AX101530	AX101531	–	AX101529
LC Duplex - MPO(m), 24 fibers	AX102309	AX102308	AX104686	AX102307
SC Duplex - MPO(m), 12 fibers	AX101091	AX101114	–	AX101090
ST - MPO(m), 12 fibers	AX101189	AX101190	–	AX101188

## FiberExpress Patch Panels

### Rack-mount Patch Panels



AX100041, FiberExpress 12/24 Port (1U) Rack-mount Patch Panel



AX100068, FiberExpress 24/48 Port (2U) Rack-mount Patch Panel



AX104934, FiberExpress (3U) Rack-Mount Patch Panel (Rear Access)



AX100116, FiberExpress 48/96 Port (4U) Rack-mount Patch Panel

The *FiberExpress* 1U Rack-mount Patch Panels are equipped with a special hinge that allows easy access to the rear of the patch panel without disturbing the optical fiber cable. A specially designed front panel allows connector protection and easy routing of optical fiber patch cords. The *FiberExpress* Rack-mount Patch Panels are also compatible with our 203 mm (8 in.) Splice Organizer Trays. This allows the optical fiber cable to be either terminated with single-ended patch cords or Field-Installable connectors. The patch panels can be used with ST, SC simplex, SC duplex or LC duplex adapter strips (ordered separately).

The *FiberExpress* 1U Rack-mount Patch Panel is a low-cost, compact assembly designed for interconnection or splicing of optical fiber cables, from 12 up to 48 fibers if LC double density adapter strips are used. The low-profile design minimizes rack space to only 45 mm (1.75 in.). An optional smoked Plexiglass front cover is also available.

The *FiberExpress* 2U Rack-mount Patch Panel offers a high fiber capacity, 96 fibers if using double density LC adapter strips. The *FiberExpress* 2U comes equipped with a smoked Plexiglass front cover that protects fiber connections while allowing for quick visual inspection.

The *FiberExpress* 4U Rack-mount Patch Panel is an economical solution for the protection of optical fiber terminations and splices, up to 192 optical fibers if using LC connectors. The connector panel, accepting the Universal Adapter Strips, is located inside the enclosure and swings out (left or right) to give easy access to the cable and splices.

The *FiberExpress* 4U Rack-mount Patch Panel is a compact enclosure for the interconnection or splicing of optical fiber cables. The low-profile design minimizes required rack space to 178 mm (7 in.). It can be used with ST, SC simplex, SC duplex and LC duplex adapter strips (ordered separately).

FiberExpress Patch Panel Capacity	Adapter Strips	Splice Trays
1U Rack-mount	2	1 x 8 in.
2U Rack-mount	4	2 x 8 in.
4U Rack-mount	8	4 x 8 in. or 4 x 12 in.
Small Wall-mount	2	1 x 8 in.
Medium Wall-mount	4	2 x 8 in. or 2 x 12 in.
Large Wall-mount	8	4 x 8 in. or 4 x 12 in.

Description	Belden Part Number
-------------	--------------------

### FiberExpress Patch Panels

Rack-mount Patch Panels	
Rack-mount Patch Panel 1U	AX100041
Rack-mount Patch Panel 2U	AX100068
Rack-mount Patch Panel 3U, Rear Access	AX104934
Rack-mount Patch Panel 4U	AX100116

If Single-ended patch cords are to be spliced to the fiber cable, don't forget to order Splice Organizer Trays or Kits. Both these and the Universal Adapter Strips can be ordered in the *FiberExpress* Accessories section.

One Enterprise.  
One Infrastructure.  
One Partner.



**FiberExpress Patch Panels** (continued)  
Rack-mount Accessories and Wall-mount Patch Panels

**FiberExpress Rack-mount Patch Panels**  
**1U and 2U Accessories**

The accessories provide additional panel mounting flexibility for racks, cabinets and cable entry.

Description	Belden Part Number
-------------	--------------------

**FiberExpress Patch Panels**

<b>Rack-Mount Accessories (1U and 2U)</b>	
127 mm (5 in.) Universal Offset Bracket Kit: for 19 in. and 23 in. racks (1U), Black	<b>AX101799</b>
for 19 in. and 23 in. racks (2U), Black	<b>AX101797</b>
23 in. Universal extension bracket, Black	<b>AX101801</b>
Right side cable entry bracket (1U), Black	<b>AX100046</b>
Right side cable entry bracket (2U), Black	<b>AX100073</b>
Front Cover (1U), Smoked Plexiglas	<b>AX100045</b>

**FiberExpress Wall-Mount Patch Panel**

The *FiberExpress* Wall-mount Patch Panel Series is an economical solution for the protection of optical fiber terminations and splices in hostile environments.

Using the *FiberExpress* Universal Adapter Strips (ordered separately), the Wall-mount Patch Panels allow for flexible and customized patch panel

design. They are compatible with most industry standard connections: ST, SC simplex, SC duplex and LC duplex.

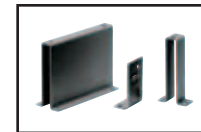
The *FiberExpress* Wall-mount Patch Panels have an ergonomic design, rugged construction and compact assemblies to effectively protect your optical fiber terminations and splices.

Description	Belden Part Number
-------------	--------------------

**FiberExpress Patch Panels**

<b>Wall-mount</b>	
Small, Black	<b>AX100495</b>
Medium, Black	<b>AX100540</b>
Large, Black	<b>AX100542</b>

If optical single-ended patch cords are to be spliced to the fiber cable, don't forget to order Splice Organizer Trays or Kits in *FiberExpress* Accessories section. Universal Adapter Strips can be ordered in *FiberExpress* Patch Panels section.



AX101799, 127 mm (5 in.) Universal Offset Bracket Kit, for 19 in. and 23 in. Racks for 1U



AX100046, Right Side Cable Entry Bracket for 1U



AX101801, 23 in. Rack Universal Extension Bracket for 1U and 2U



AX100045, Front Cover for 1U

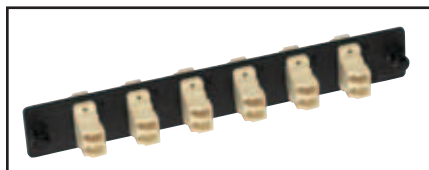


AX100495, Small Wall Mount

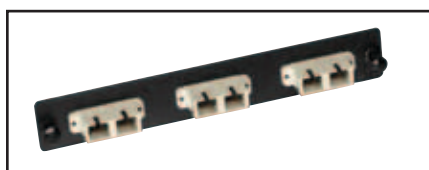


AX100542, Large Wall Mount

## FiberExpress Patch Panels (continued) Optical Fiber Adapter Strips and Accessories



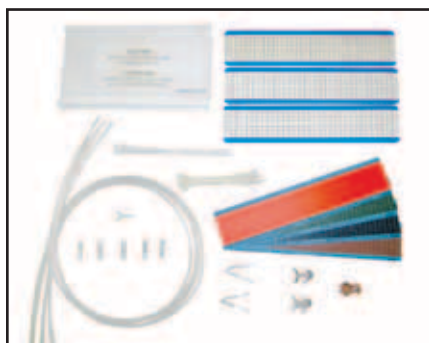
AX101729, Adapters loaded with 6 LC Duplex



AX100094, Adapters loaded with 3 SC Duplex



AX100066, Blank Strip



A0649869, Optical Fiber Splice Organizer Kits and Trays

### Optical Fiber Adapter Strips

Universal Optical Fiber Adapter Strips are pre-loaded with six (single density) or 12 (double density) adapter sleeves. Two types of adapter sleeves are available: Phosphor Bronze and Zirconia Ceramic. Adapter sleeves are used as

the connecting interface between two optical fiber connectors.

A **Blank Adapter Strip** is also available and can be used with any FiberExpress Patch Panel to fill in unused adapter strip openings.

Description	Belden Part Number	
	Phosphor Bronze, Multimode	Zirconia Ceramic, Single-mode

### FiberExpress Patch Panels

Adapter Strips		
LC Duplex, 12 fibers	AX101729	AX101731
LC Duplex, 24 fibers	AX101741	AX101743
SC Simplex, 6 fibers	AX100092	AX100538
SC Duplex, 6 fibers	AX100094	AX101407
SC Simplex, 12 fibers	AX100084	AX100532
SC Duplex, 12 fibers	AX100098	AX101409
ST, 6 fibers	AX100088	AX100534
ST, 12 fibers	AX100080	AX100528
Blank	← AX100066 →	

### Optical Fiber Accessories

Optical Fiber Splice Organizer Kits provide the accessories necessary for installing the FiberExpress Patch Panels, as well as other

fiber terminals that accommodate the standard Belden organizer tray.

Splice Tray Optimal Capacity	Splices
8 in. Splice Tray Fusion	24
12 in. Splice Tray Fusion	24
8 in. Splice Tray Universal (mechanical or fusion)	12
12 in. Splice Tray Universal (mechanical or fusion)	12

Description	Belden Part Number
-------------	--------------------

### FiberExpress Optical Fiber Accessories

Optical Fiber Splice Organizer Kit	
Splice kit, tray, 203 mm (8 in.)	A0649869
Splice kit, tray, 305 mm (12 in.)	A0318904

Optical Fiber Splice Tray	
Fusion, 203 mm (8 in.)	A0335015
Fusion, 305 mm (12 in.)	A0316446
Universal (mechanical or fusion), 203 mm (8 in.)	AX100079
Universal (mechanical or fusion), 305 mm (12 in.)	A0394328
Tray Cover, 203 mm (8 in.)	A0394331
Tray Cover, 305 mm (12 in.)	A0394330
Fusion Splice Protection 250 μm to 250 μm, Yellow	AX101169
Fusion Splice Protection 900 μm to 250 μm, Blue	AX101170
Fusion Splice Protection 900 μm to 900 μm, Green	AX101171