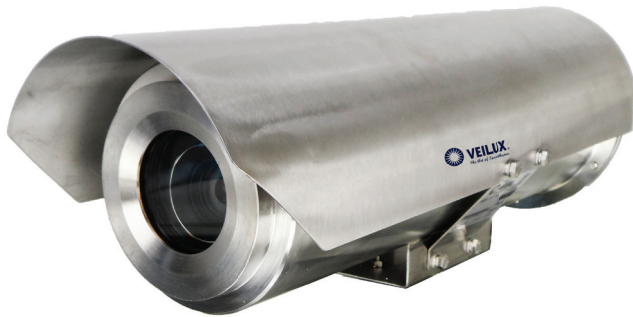


V-ARMOR SERIES SVEX-T300A

Explosion Proof All Weather Housing



This SVEX-T300A EXPLOSION PROOF CAMERA HOUSING is a new explosion proof housing design which adopts advanced production techniques and matured quality management system to make its quality, performance and appearance a leader in monitoring products. This camera housing has the advantage of light weight and easy installation.

Strictly according to European Directive EC/94/9 and EN50014, Standards of GB3836.1-2000 GB3836.1—2000 Electrical apparatus for explosive atmosphere: General requirements, GB3836.2-2000 Electrical apparatus for explosive atmosphere: Flameproof 'd' and GB12476.1-2000 Electrical apparatus for explosive dust: Using enclosure and limiting surface temperature for protecting electrical apparatus, SVEX-T300A EXPLOSION PROOF CAMERA HOUSING has two specifications: the standard one which could be integrated with a zoom lens camera, and the smaller one which can be fitted with a focus lens camera.

The SVEX-T300A explosion proof camera enclosures are used in explosive and hazardous atmospheres throughout the world. They are designed to meet the most rigorous requirements of explosion proof and dust-ignition proof electrical equipment for installation and use in hazardous locations.

Specifications	SVEX-T300A
CERTIFICATE	
Ex-Marking	Exd II CT6 (H2)
Certificate	CNEX07.1032x
License	≤0.5A
ELECTRIC	
Input voltage	220VAC/24VAC, 50/60Hz
Voltage scope	±10%
Working current	≤0.5A
Heater (optional)	To setup while it is 14°F (-10°C)
Wiper	
Power consumption	30W (w/heating)
Electric connection	2-Core For Power 4-Core For Lens Control 4-Core For Wiper Power & Control Coaxial Cable For Video Signal Out
ENVIRONMENTAL	
Air pressure	86 ~ 106KPa
Temperature	-49°F ~ 140°F (-45°C ~ +60°C)
Humidity	≤95%RH [77°F (+25°C)]
MECHANICAL	
Material	316L
IP	IP67
Inner size	260mm(L) x 75mm(W) x 60mm(H)
Viewing window	15mm thick
View window area	Φ66mm
Weight/ Shipping weight	35lb (16Kg) / 39.6lb (18Kg)
Cable outlet qty	3
Outlet qty	G-3/4"
Mounting	Pan / Tilt, Half-Pan / Tilt, Brackets

Key Features

- Stainless steel material
- Inside Be w/ Fixed Lens or Zoom Lens Camera
- Steel Glass For Window
- 3 Cable Outlets at Housing Rear
- IP68

Dimensions

